

PRAIRIE TOWNSHIP  
S.E. QTR. SECTION 12  
T-13 N; R-13 W  
HOLMES COUNTY, OHIO

SURVEYED FOR: MONROE YODER

0 100 200



SCALE: 1"=100'

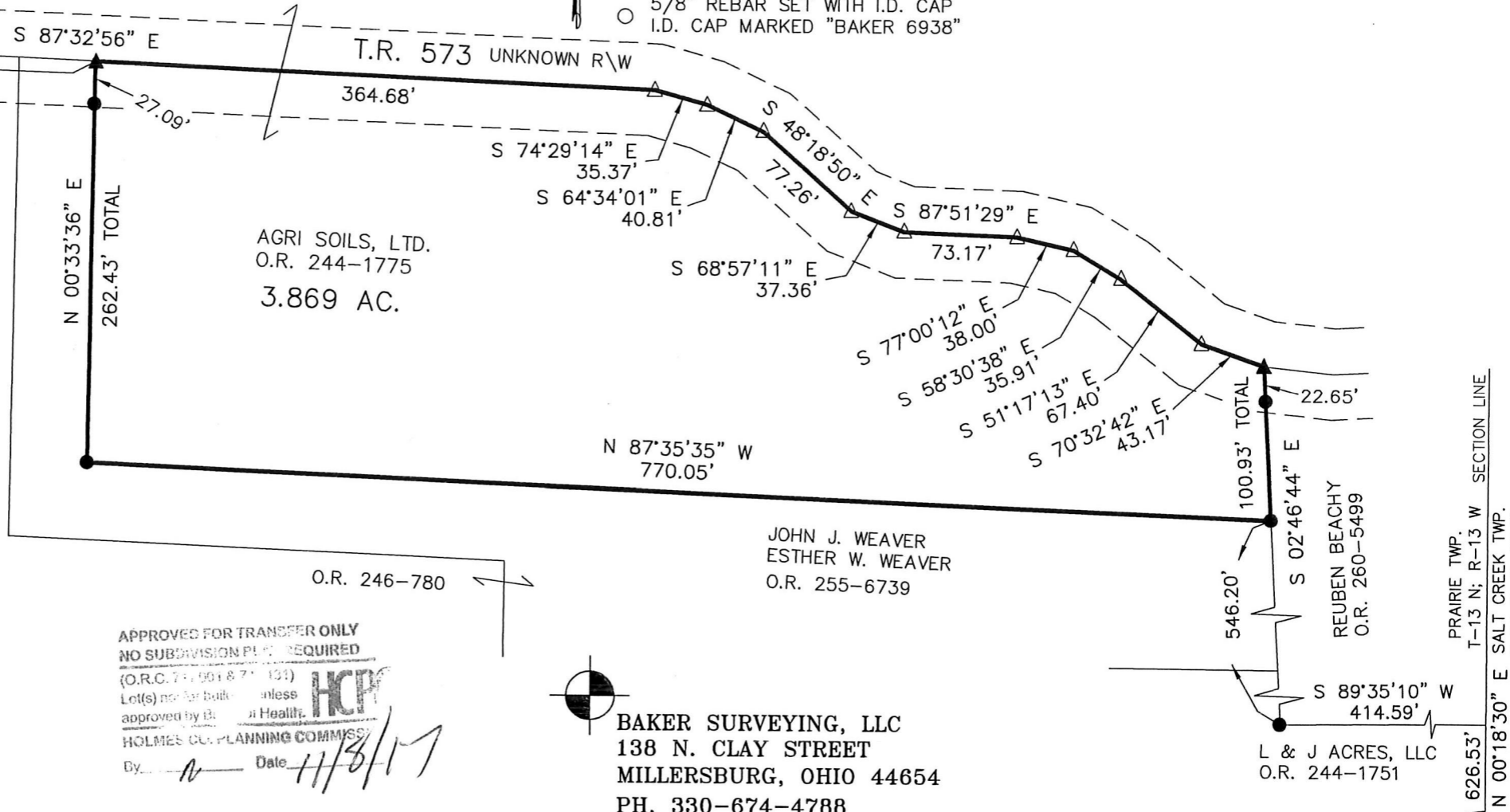
- ▲ R.R. SPIKE FOUND
- 5/8" REBAR FOUND UNLESS OTHERWISE NOTED
- △ R.R. SPIKE SET
- 5/8" REBAR SET WITH I.D. CAP I.D. CAP MARKED "BAKER 6938"

201700107882  
B: 19 P: 3339  
FILED FOR RECORD IN  
HOLMES COUNTY, OH  
ANITA HALL, COUNTY RECORDER  
11/14/2017 11:26 AM  
SMALL PLAT, 40.00  
PAGES: 1

ORV 262 PG 561

REFERENCES

O.R. VOL. 244 PAGE 1775  
O.R. VOL. 255 PAGE 6739  
PLAT VOL. 2 PAGE 526  
PLAT VOL. 19 PAGE 2308  
PLAT VOL. 19 PAGE 3244  
BEARINGS FROM  
PLAT VOL. 19 PAGE 2308



I CERTIFY THIS SURVEY TO BE CORRECT TO THE BEST OF MY KNOWLEDGE.

*Donald C. Baker*  
DONALD C. BAKER P.S. 6938  
DATE: AUGUST 22, 2017  
KES\VJD  
FILE NAME: WORK4\S-434-17

APPROVED FOR TRANSFER ONLY  
NO SUBDIVISION PLAT REQUIRED

(O.R.C. 71.001 & 71.031)  
Lot(s) not for build unless approved by Board of Health.  
HCP  
HOLMES CO. PLANNING COMMISSION  
By: *[Signature]* Date: *11/3/17*



BAKER SURVEYING, LLC  
138 N. CLAY STREET  
MILLERSBURG, OHIO 44654  
PH. 330-674-4788  
FAX 330-674-6027

PLAT APPROVED

10/25/2017 TD

PRAIRIE TWP.  
T-13 N; R-13 W SECTION LINE  
SALT CREEK TWP.  
T-14 N; R-12 W  
626.53'  
12  
13