

ORV 262 PG 1166

0 100 200



SCALE: 1"=100'

- STONE FOUND
- 5/8" REBAR FOUND UNLESS OTHERWISE NOTED
- 5/8" REBAR SET WITH I.D. CAP I.D. CAP MARKED "BAKER 6938"

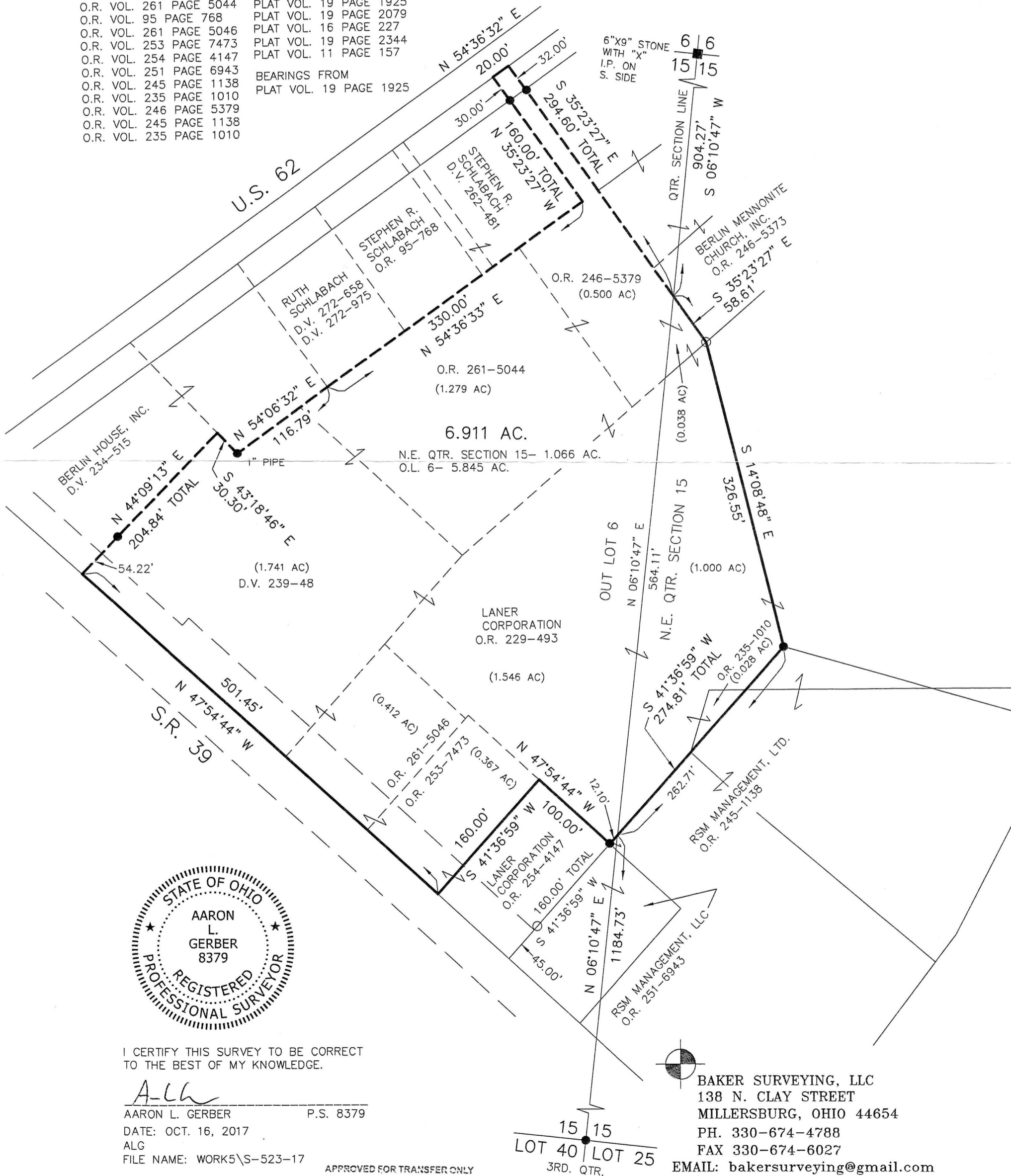
VILLAGE OF BERLIN
 PART OF O.L. 6

BERLIN TOWNSHIP
 N.E. QTR. SECTION 15
 T-9 N; R-5 W
 HOLMES COUNTY, OHIO

REFERENCES

SURVEYED FOR: LANER CORPORATION

DEED VOL. 239 PAGE 48	PLAT VOL. 10 PAGE 874
DEED VOL. 234 PAGE 515	PLAT VOL. 19 PAGE 2079
DEED VOL. 262 PAGE 481	PLAT VOL. 16 PAGE 811
DEED VOL. 272 PAGE 975	PLAT VOL. 16 PAGE 578
O.R. VOL. 261 PAGE 5044	PLAT VOL. 19 PAGE 2793
O.R. VOL. 95 PAGE 768	PLAT VOL. 19 PAGE 1925
O.R. VOL. 261 PAGE 5046	PLAT VOL. 19 PAGE 2079
O.R. VOL. 253 PAGE 7473	PLAT VOL. 16 PAGE 227
O.R. VOL. 254 PAGE 4147	PLAT VOL. 19 PAGE 2344
O.R. VOL. 251 PAGE 6943	PLAT VOL. 11 PAGE 157
O.R. VOL. 245 PAGE 1138	BEARINGS FROM
O.R. VOL. 235 PAGE 1010	PLAT VOL. 19 PAGE 1925
O.R. VOL. 246 PAGE 5379	
O.R. VOL. 245 PAGE 1138	
O.R. VOL. 235 PAGE 1010	



I CERTIFY THIS SURVEY TO BE CORRECT TO THE BEST OF MY KNOWLEDGE.

ALG

AARON L. GERBER P.S. 8379

DATE: OCT. 16, 2017

ALG

FILE NAME: WORK5\S-523-17

APPROVED FOR TRANSFER ONLY
 NO SUBDIVISION PLAT REQUIRED

(O.R.C. 711.001 & 711.131)

Lot(s) not for building unless

approved by Board of Health.

HOLMES CO. PLANNING COMMISSION

By *ALG* Date 11-3-17



BAKER SURVEYING, LLC
 138 N. CLAY STREET
 MILLERSBURG, OHIO 44654
 PH. 330-674-4788
 FAX 330-674-6027

EMAIL: bakersurveying@gmail.com

PLAT APPROVED

11/2/2017

