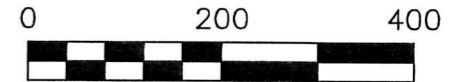
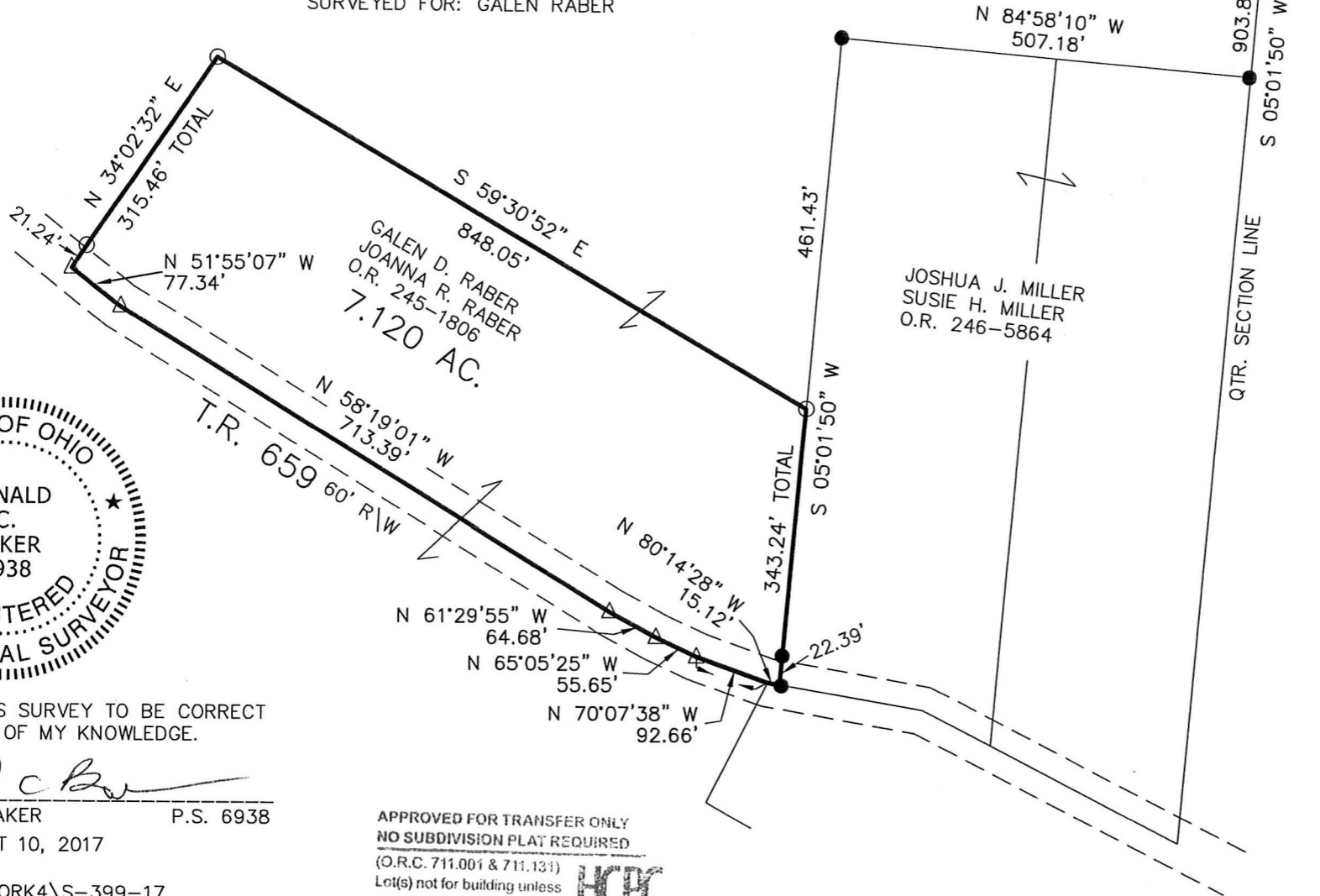


ORIGINAL PLAT FILED WITH MAP OFFICE
ANITA HALL, RECORDER

PAINT TOWNSHIP
N.W. QTR. SECTION 26
T-15 N; R-11 W
HOLMES COUNTY, OHIO

SURVEYED FOR: GALEN RABER



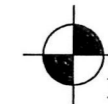
SCALE: 1"=200'

- STONE FOUND
- 5/8" REBAR FOUND UNLESS OTHERWISE NOTED
- △ R.R. SPIKE SET
- 5/8" REBAR SET WITH I.D. CAP I.D. CAP MARKED "BAKER 6938"

REFERENCES

- O.R. VOL. 245 PAGE 1806
- O.R. VOL. 246 PAGE 5864
- PLAT VOL. 17 PAGE 635
- PLAT VOL. 19 PAGE 2299

BEARINGS FROM
PLAT VOL. 19 PAGE 2299



BAKER SURVEYING, LLC
 138 N. CLAY STREET
 MILLERSBURG, OHIO 44654
 PH. 330-674-4788
 FAX 330-674-6027



I CERTIFY THIS SURVEY TO BE CORRECT
TO THE BEST OF MY KNOWLEDGE.

Donald C. Baker

DONALD C. BAKER P.S. 6938

DATE: AUGUST 10, 2017

KES\ADC

FILE NAME: WORK4\S-399-17

APPROVED FOR TRANSFER ONLY
NO SUBDIVISION PLAT REQUIRED

(O.R.C. 711.001 & 711.131)

Lot(s) not for building unless

approved by Board of Health.

HOLMES CO. PLANNING COMMISSION

By: *[Signature]*

Date: *[Signature]*



PLAT APPROVED

8/15/2017

