

ORV 260 PG 3567,  
3570

ORIGINAL PLAT FILED WITH MAP OFFICE  
ANITA HALL, RECORDER

PAINT TOWNSHIP  
N.E QTR. SECTION 32  
T-15 N; R-11 W  
HOLMES COUNTY, OHIO

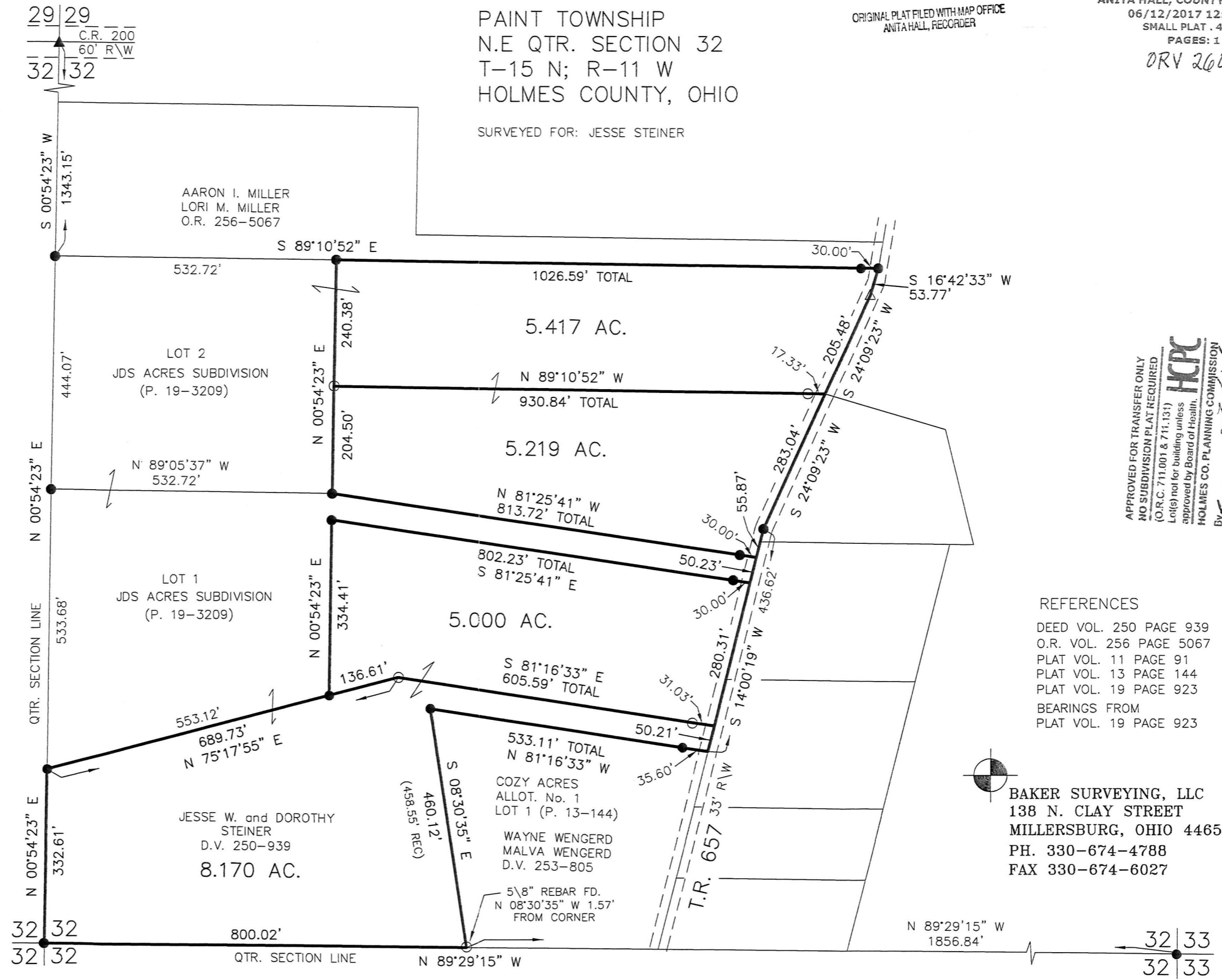
SURVEYED FOR: JESSE STEINER

0 200 400



SCALE: 1"=200'

- ▲ R.R. SPIKE FOUND
- 5/8" REBAR FOUND  
UNLESS OTHERWISE NOTED
- △ R.R. SPIKE SET
- 5/8" REBAR SET WITH I.D. CAP  
I.D. CAP MARKED "BAKER 6938"



APPROVED FOR TRANSFER ONLY  
NO SUBDIVISION PLAT REQUIRED  
(O.R.C. 711.001 & 711.131)  
Lot(s) not for building unless  
approved by Board of Health,  
HOLMES CO. PLANNING COMMISSION  
By: *[Signature]* Date: *6/12/17*

- REFERENCES
- DEED VOL. 250 PAGE 939
  - O.R. VOL. 256 PAGE 5067
  - PLAT VOL. 11 PAGE 91
  - PLAT VOL. 13 PAGE 144
  - PLAT VOL. 19 PAGE 923
  - BEARINGS FROM  
PLAT VOL. 19 PAGE 923

BAKER SURVEYING, LLC  
138 N. CLAY STREET  
MILLERSBURG, OHIO 44654  
PH. 330-674-4788  
FAX 330-674-6027



I CERTIFY THIS SURVEY TO BE CORRECT  
TO THE BEST OF MY KNOWLEDGE.

*[Signature]*  
DONALD C. BAKER P.S. 6938  
DATE: MAY 10, 2017  
CJG\JPD  
FILE NAME: WORK4\S-113-17

PLAT APPROVED  
*6/12/2017*