

8 0 3 5 2 3 4  
TX:4019645

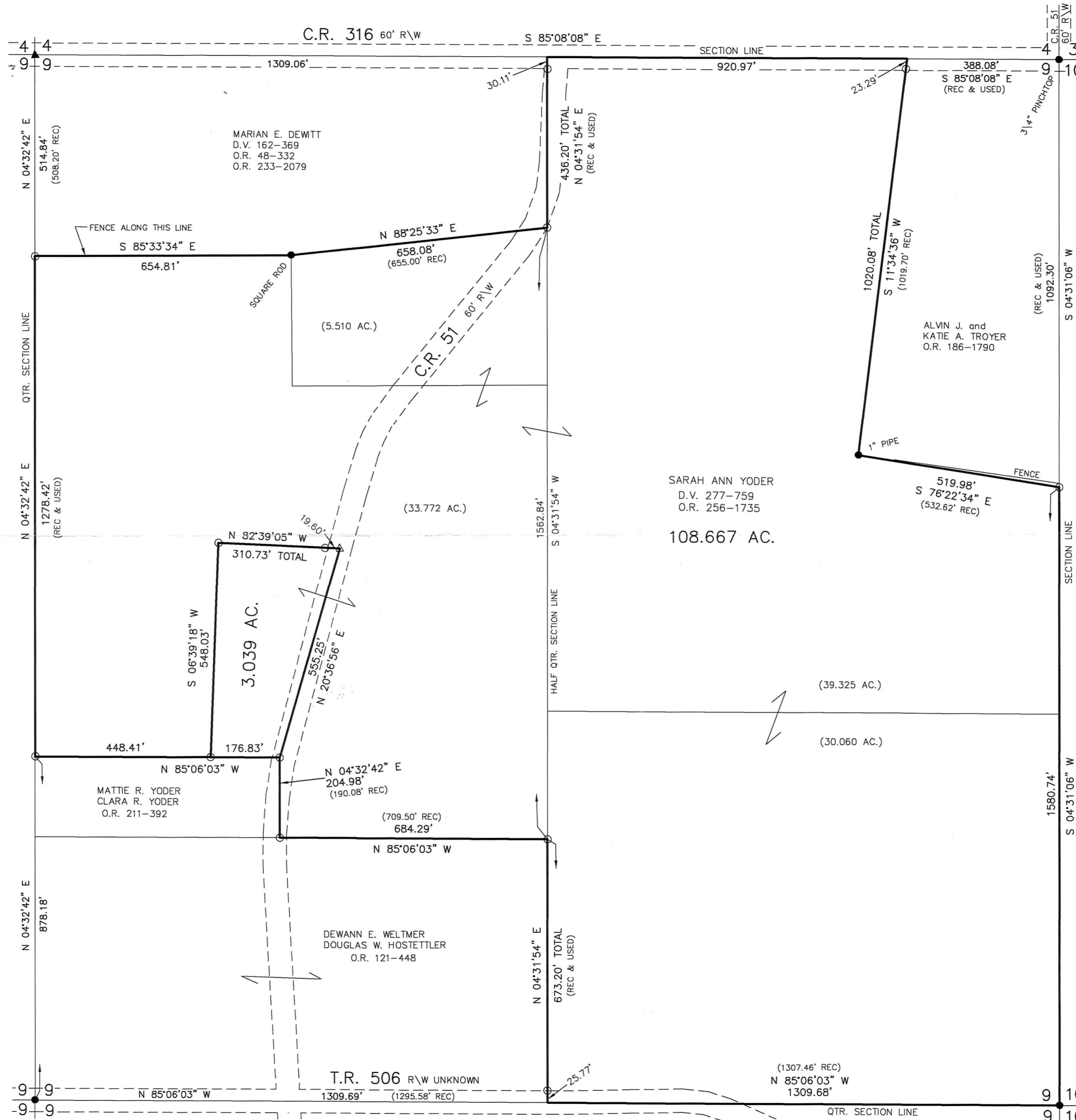
RIPLEY TOWNSHIP  
N.E. QTR. SECTION 9  
T-17 N; R-14W  
HOLMES COUNTY, OHIO

SURVEYED FOR: SARAH ANN YODER



SCALE: 1"=200'

- ▲ R.R. SPIKE FOUND
- 5/8" REBAR FOUND UNLESS OTHERWISE NOTED
- △ R.R. SPIKE SET
- 5/8" REBAR SET WITH I.D. CAP I.D. CAP MARKED "BAKER 6938"



201700104658  
 B: 19 P: 3191  
 FILED FOR RECORD IN  
 HOLMES COUNTY, OH  
 ANITA HALL, COUNTY RECORDER  
 04/13/2017 10:58 AM  
 PLAT MED. 43.20  
 DATED: 1  
 ORV 259 PGS 6521  
 6526

APPROVED FOR TRANSFER ONLY  
 NO SUBDIVISION PLAT REQUIRED  
 (O.R.C. 711.001 & 711.101)  
 L119) not for building unless  
 approved by Board of Health  
 HOLMES CO. PLANNING COMMISSION  
 By: A Date: 3/17/17

- REFERENCES
- DEED VOL. 227 PAGE 759
  - O.R. VOL. 256 PAGE 1735
  - O.R. VOL. 233 PAGE 2079
  - O.R. VOL. 121 PAGE 448
  - O.R. VOL. 211 PAGE 392
  - O.R. VOL. 186 PAGE 1790
  - PLAT VOL. 10 PAGE 702
  - PLAT VOL. 19 PAGE 2946
  - PLAT VOL. 19 PAGE 2196
  - PLAT VOL. 12 PAGE 434
  - PLAT VOL. 17 PAGE 145
- BEARINGS FROM  
 PLAT VOL. 19 PAGE 2196



I CERTIFY THIS SURVEY TO BE CORRECT TO THE BEST OF MY KNOWLEDGE.

*Caleb Galbraith*  
 CALEB J. GALBRAITH P.S. 8703  
 DATE: MARCH 3, 2017  
 C.J.G./J.P.D.  
 FILE NAME: WORK4\S-39-17

BAKER SURVEYING, LLC  
 138 N. CLAY STREET  
 MILLERSBURG, OHIO 44654  
 PH. 330-674-4788  
 FAX 330-674-6027

PLAT APPROVED

3/14/2017 TD