

- ∅ FENCE POST FOUND
- 5/8" REBAR FOUND WITH I.D. CAP MARKED SJL INC (UNLESS NOTED)
- 5/8" REBAR SET WITH I.D. CAP MARKED SJL INC

R. = RECORD
H. = HELD

BASIS OF BEARING:
The bearings as shown hereon are relative to GRID NORTH of the OHIO STATE PLANE COORDINATE SYSTEM, NAD 83 DATUM

S.R. 39 R/W VARIES

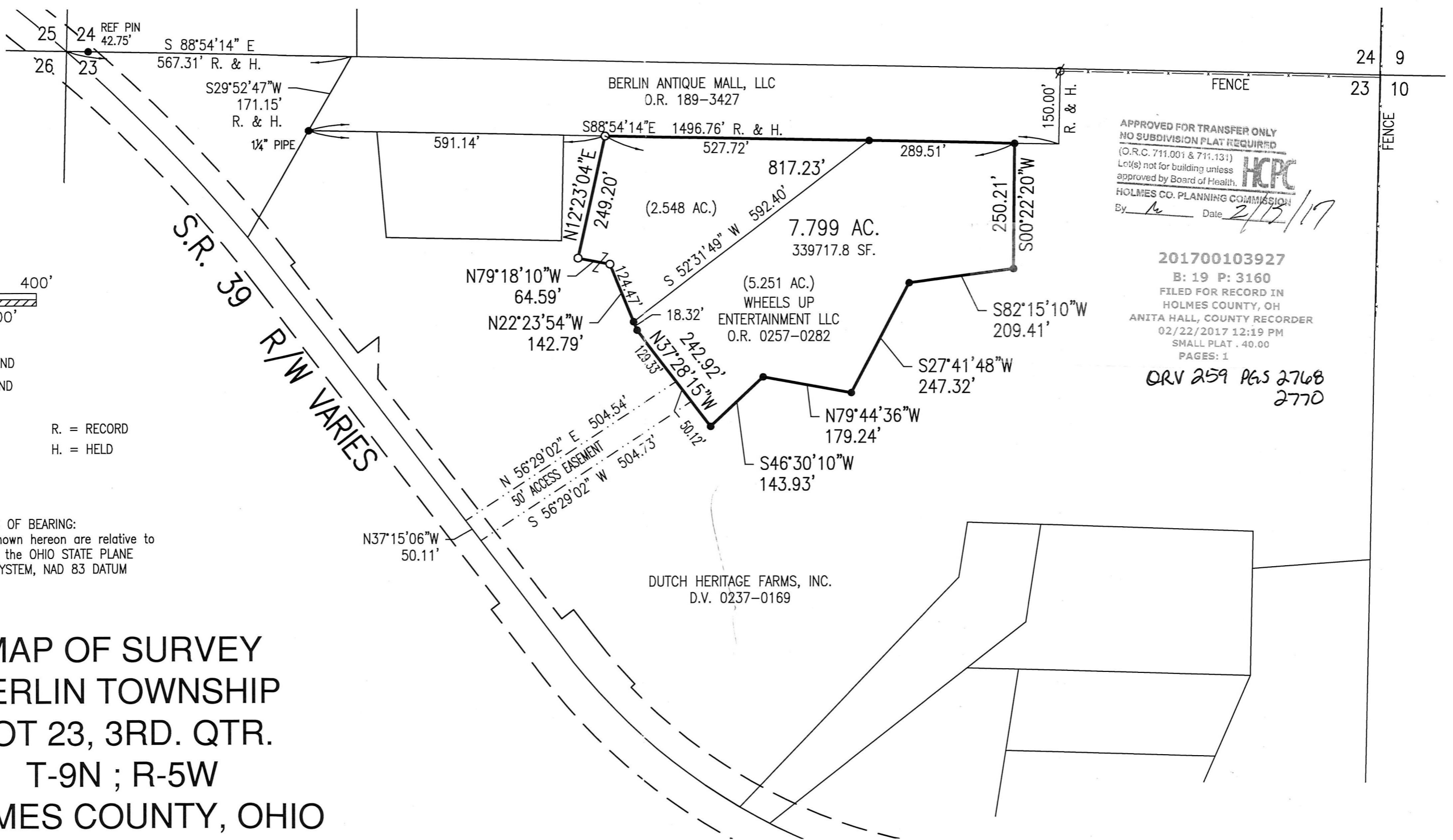
**MAP OF SURVEY
BERLIN TOWNSHIP
LOT 23, 3RD. QTR.
T-9N ; R-5W
HOLMES COUNTY, OHIO**

MASTER PLAT THE PURPOSE OF THIS SURVEY

- ACTION 1. ANNEX. 2.548 AC. FROM DUTCH HERITAGE FARMS INC.
- ACTION 2. CONSOLIDATE WHEELS UP ENTERTAINMENT INTO A 7.799 AC. PARCEL

Distances shown hereon are expressed in feet and decimal parts thereof, bearings are used to express angles only, iron pins or monuments were found or set as indicated hereon. All of which I believe to be correct to the best of my knowledge.

By: *Mark E. Purdy* 1-31-17
Mark E. Purdy, P.S. #7307 Date



APPROVED FOR TRANSFER ONLY
NO SUBDIVISION PLAT REQUIRED
(O.R.C. 711.001 & 711.131)
Let(s) not for building unless approved by Board of Health.
HOLMES CO. PLANNING COMMISSION
By: *[Signature]* Date: 2/15/17

201700103927
B: 19 P: 3160
FILED FOR RECORD IN
HOLMES COUNTY, OH
ANITA HALL, COUNTY RECORDER
02/22/2017 12:19 PM
SMALL PLAT . 40.00
PAGES: 1
ORV 259 PGS 276B 2770

		SHAFFER, JOHNSTON, LICHTENWALTER & ASSOCIATES, INC. Consulting Engineers & Surveyors 3477 Commerce Parkway, Suite C Wooster, Ohio 44691 TEL (330) 345-6377 FAX (330) 345-6725 EMAIL sjl@sjl-inc.com	
DRAWN C. Falb	CHECKED	SCALE 1" = 200'	DATE 01/30/17
DWG NO: EW-2531-BASE		JOB NO: EW-2531	SHEET 1 OF 1

2/15/2017 JP
PLAT APPROVED