

BERLIN TOWNSHIP
1ST. QTR., LOT 17
T-9 N; R-6 W
HOLMES COUNTY, OHIO

SURVEYED FOR: JERRY SCHLABACH

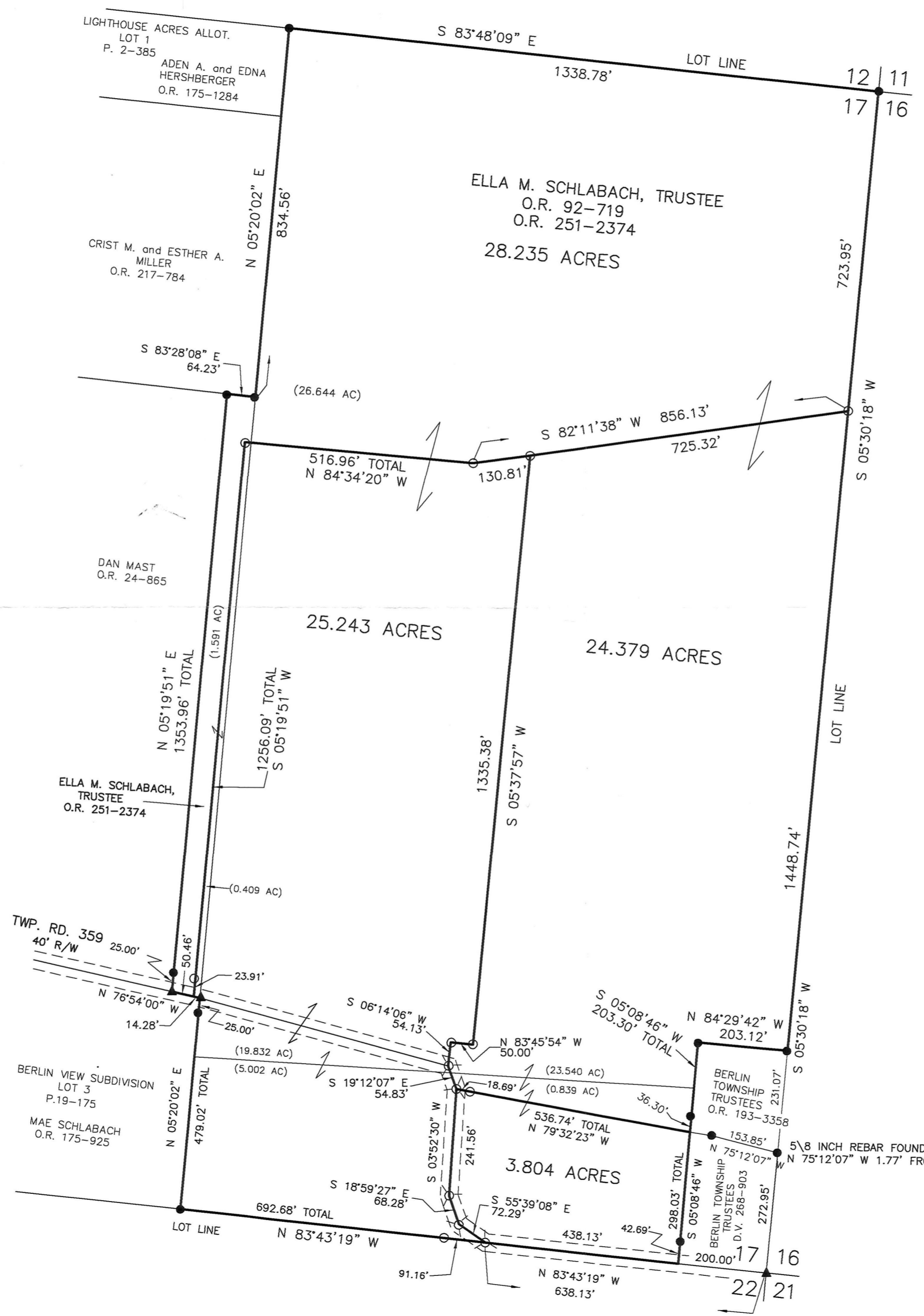
REFERENCES:

- O.R. VOL. 92 PAGE 719
- O.R. VOL. 251 PAGE 2374
- O.R. VOL. 24 PAGE 865
- PLAT VOL. 13 PAGE 43
- PLAT VOL. 12 PAGE 535
- PLAT VOL. 13 PAGE 43
- PLAT VOL. 16 PAGE 933
- PLAT VOL. 14 PAGE 823

BEARINGS FROM PLAT VOL. 16 PAGE 933



- ▲ R.R. SPIKE FOUND
- 5/8" REBAR FOUND
- P.K. NAIL SET
- 5/8" REBAR WITH I.D. CAP SET I.D. CAP MARKED "BAKER 6938"



201700103354
B: 19 P: 3141
FILED FOR RECORD IN
HOLMES COUNTY, OH
ANITA HALL, COUNTY RECORDER
01/11/2017 2:55 PM
PLAT MED. 43.20
PAGES: 1
ORV 258 Pg 7437



I CERTIFY THIS SURVEY TO BE CORRECT TO THE BEST OF MY KNOWLEDGE.

Donald C. Baker
DONALD C. BAKER PS 6938

FIELD SURVEY MADE MAY 16, 2003
REVISED PLAT - FEB. 18, 2015
REVISED DATE - DECEMBER 7, 2016
FCC\FDB
FILE NAME: WORK4\S-359-14



DONALD C. BAKER SURVEYING
138 N. CLAY ST.
MILLERSBURG, OH 44654
PH. 330-674-4788
FAX: 330-674-6027

APPROVED FOR TRANSFER ONLY
HO SUBDIVISION PLAT REQUIRED
(O.R.C. 711.001 & 711.131)
Let(s) not for building unless
approved by Board of Health.
HOLMES CO. PLANNING COMMISSION
By: *[Signature]* Date: *1/12/17*

PLAT APPROVED

1/15/2017