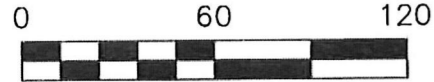


HARDY TOWNSHIP
N.W. QTR. SECTION 14
T-9 N; R-6 W
HOLMES COUNTY, OHIO

SURVEYED FOR: TOM TERWILIGER



SCALE: 1"=60'

- 5/8" REBAR FOUND UNLESS OTHERWISE NOTED
- MAG NAIL SET
- △ R.R. SPIKE SET
- 5/8" REBAR SET WITH I.D. CAP I.D. CAP MARKED "BAKER 6938"



I CERTIFY THIS SURVEY TO BE CORRECT TO THE BEST OF MY KNOWLEDGE.

Donald C. Baker
DONALD C. BAKER P.S. 6938
DATE: OCT. 31, 2016
KES\CJG
FILE NAME: WORK4\S-543-16\DB-MD

ORIGINAL PLAT FILED WITH MAP OFFICE
ANITA HALL, RECORDER

201600102827

B: 19 P: 3121

FILED FOR RECORD IN
HOLMES COUNTY, OH
ANITA HALL, COUNTY RECORDER
12/09/2016 1:52 PM
SMALL PLAT . 40.00
PAGES: 1

APPROVED FOR TRANSFER ONLY
NO SUBDIVISION PLAT REQUIRED

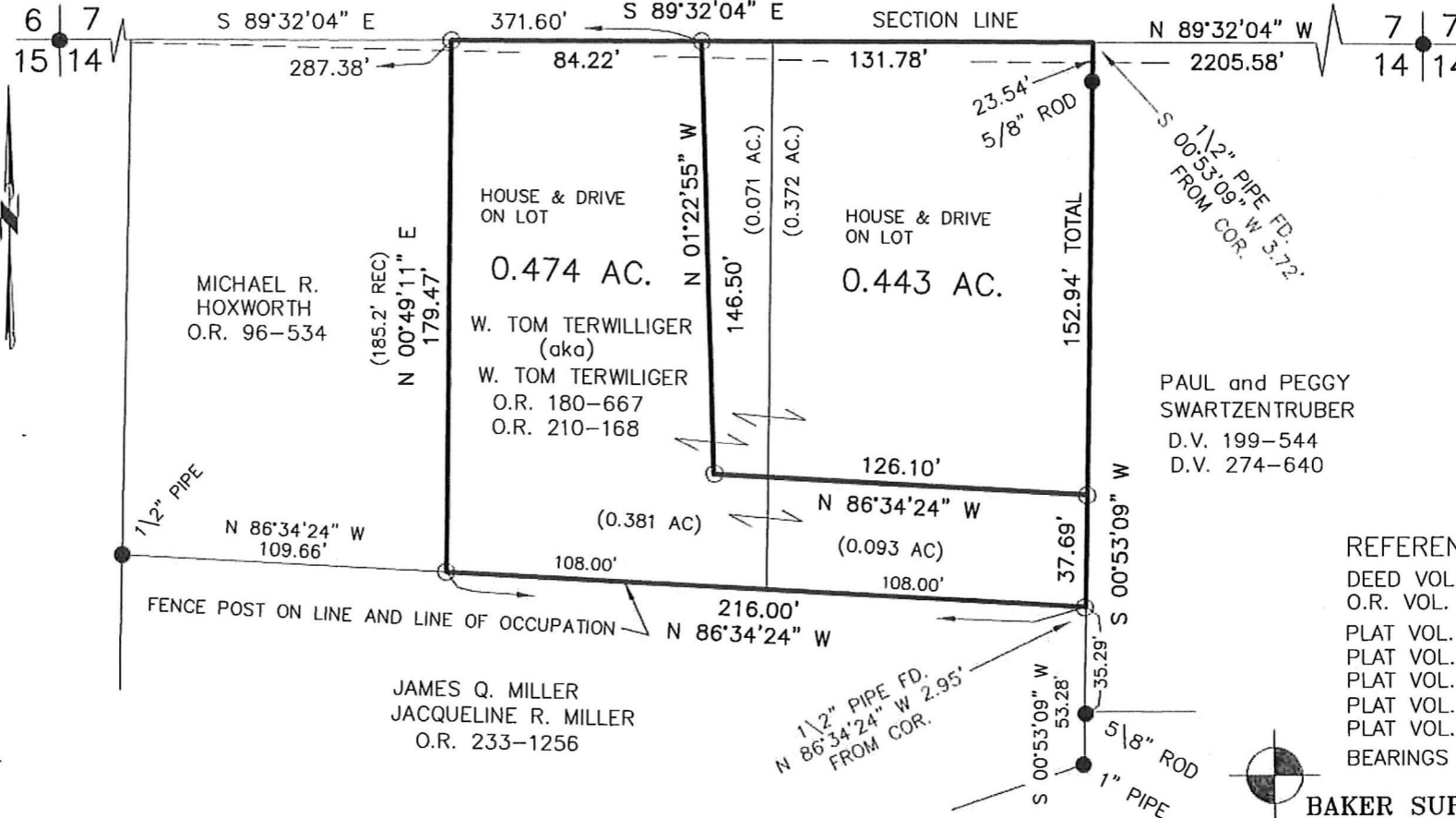
(O.R.C. 711.001 & 711.131)
Lot(s) not for building unless approved by Board of Health.



HOLMES CO. PLANNING COMMISSION
By *[Signature]* Date 11-17-16

T.R. 319 30' R/W

ORY 258 PG 4674 + 4676



REFERENCES

- DEED VOL. 274 PAGE 640
- O.R. VOL. 210 PAGE 168
- PLAT VOL. 4 PAGE 184
- PLAT VOL. 5 PAGE 147
- PLAT VOL. 8 PAGE 93
- PLAT VOL. 2 PAGE 120
- PLAT VOL. 7 PAGE 108
- BEARINGS ASSUMED

BAKER SURVEYING, LLC
138 N. CLAY STREET
MILLERSBURG, OHIO 44654
PH. 330-674-4788
FAX 330-674-6027

NOTE: P.V. 4-184 DOES NOT SHOW RUNNING THE SECTION LINE.
I HELD THE SECTION LINE AS THE NORTH PROPERTY LINE.

PLAT APPROVED

11/16/2016