

201600102164

B: 19 P: 3090

ORIGINAL PLAT FILED WITH MAP OFFICE ANITA HALL, RECORDER

FILED FOR RECORD IN HOLMES COUNTY, OH

ANITA HALL, COUNTY RECORDER

10/31/2016 11:47 AM

SMALL PLAT . 40.00

PAGES: 1

ORY 258 PG 1335

APPROVED FOR TRANSFER ONLY NO SUBDIVISION PLAT REQUIRED

(O.R.C. 711.001 & 711.131)

Lot(s) not for building unless approved by Board of Health.



HOLMES CO. PLANNING COMMISSION

By: [Signature] Date: 10/17/16

HARDY TOWNSHIP 3RD. QTR., LOT 20 T-9 N; R-7 W HOLMES COUNTY, OHIO

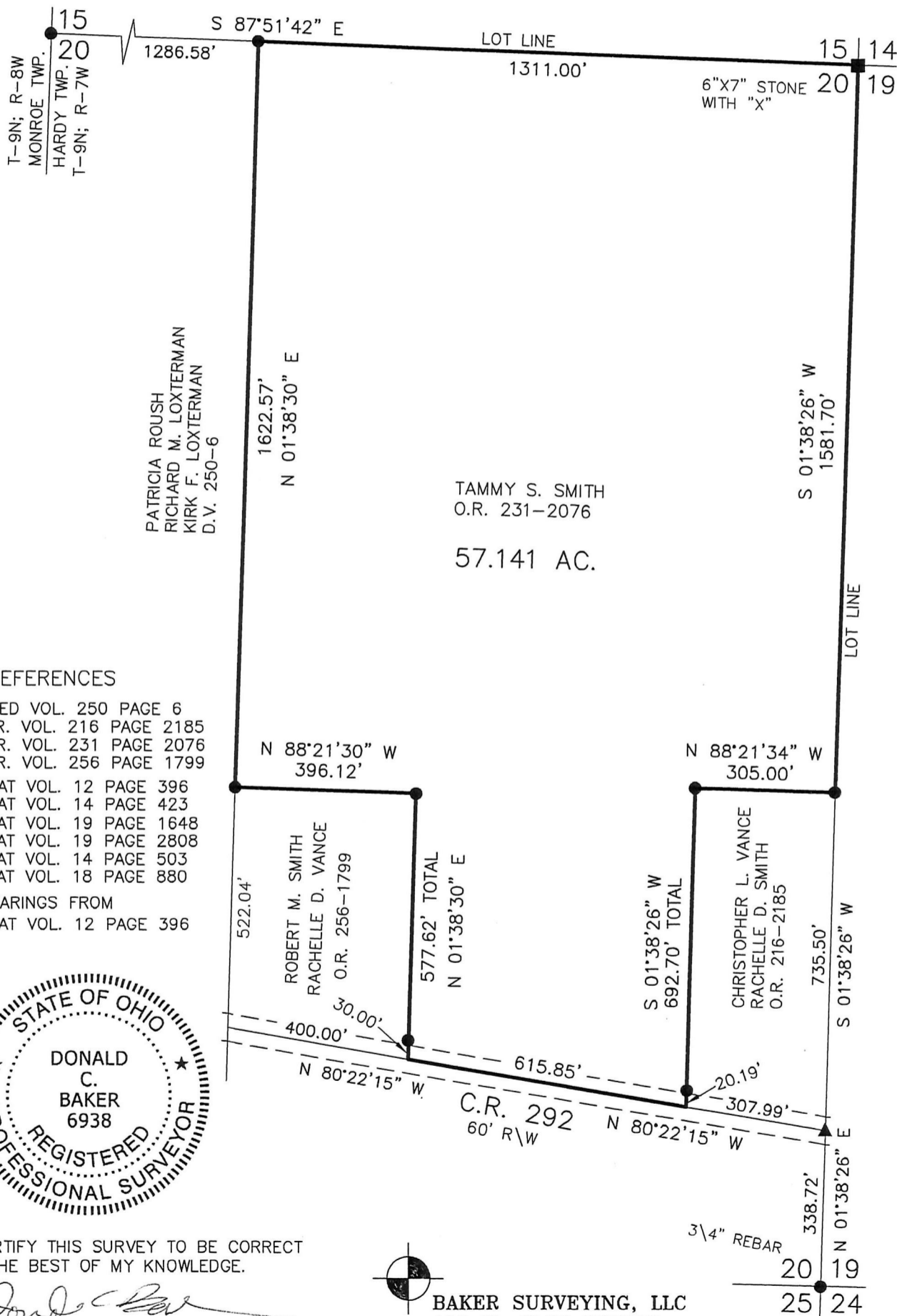
SURVEYED FOR: ATTY GARRETT ROACH

0 300 600



SCALE: 1"=300'

- STONE FOUND
- ▲ R.R. SPIKE FOUND
- 5/8" REBAR FOUND UNLESS OTHERWISE NOTED
- 5/8" REBAR SET WITH I.D. CAP I.D. CAP MARKED "BAKER 6938"



REFERENCES

- DEED VOL. 250 PAGE 6
- O.R. VOL. 216 PAGE 2185
- O.R. VOL. 231 PAGE 2076
- O.R. VOL. 256 PAGE 1799
- PLAT VOL. 12 PAGE 396
- PLAT VOL. 14 PAGE 423
- PLAT VOL. 19 PAGE 1648
- PLAT VOL. 19 PAGE 2808
- PLAT VOL. 14 PAGE 503
- PLAT VOL. 18 PAGE 880
- BEARINGS FROM PLAT VOL. 12 PAGE 396



I CERTIFY THIS SURVEY TO BE CORRECT TO THE BEST OF MY KNOWLEDGE.

[Signature] DONALD C. BAKER P.S. 6938

DATE: MAY 16, 2016 C.J.G./JPD FILE NAME: WORK4\S-273-16



BAKER SURVEYING, LLC 138 N. CLAY STREET MILLERSBURG, OHIO 44654 PH. 330-674-4788 FAX 330-674-6027

PLAT APPROVED

10/13/2016 [Signature]

