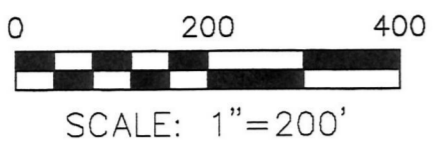


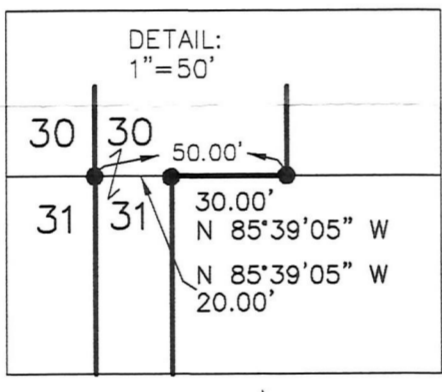
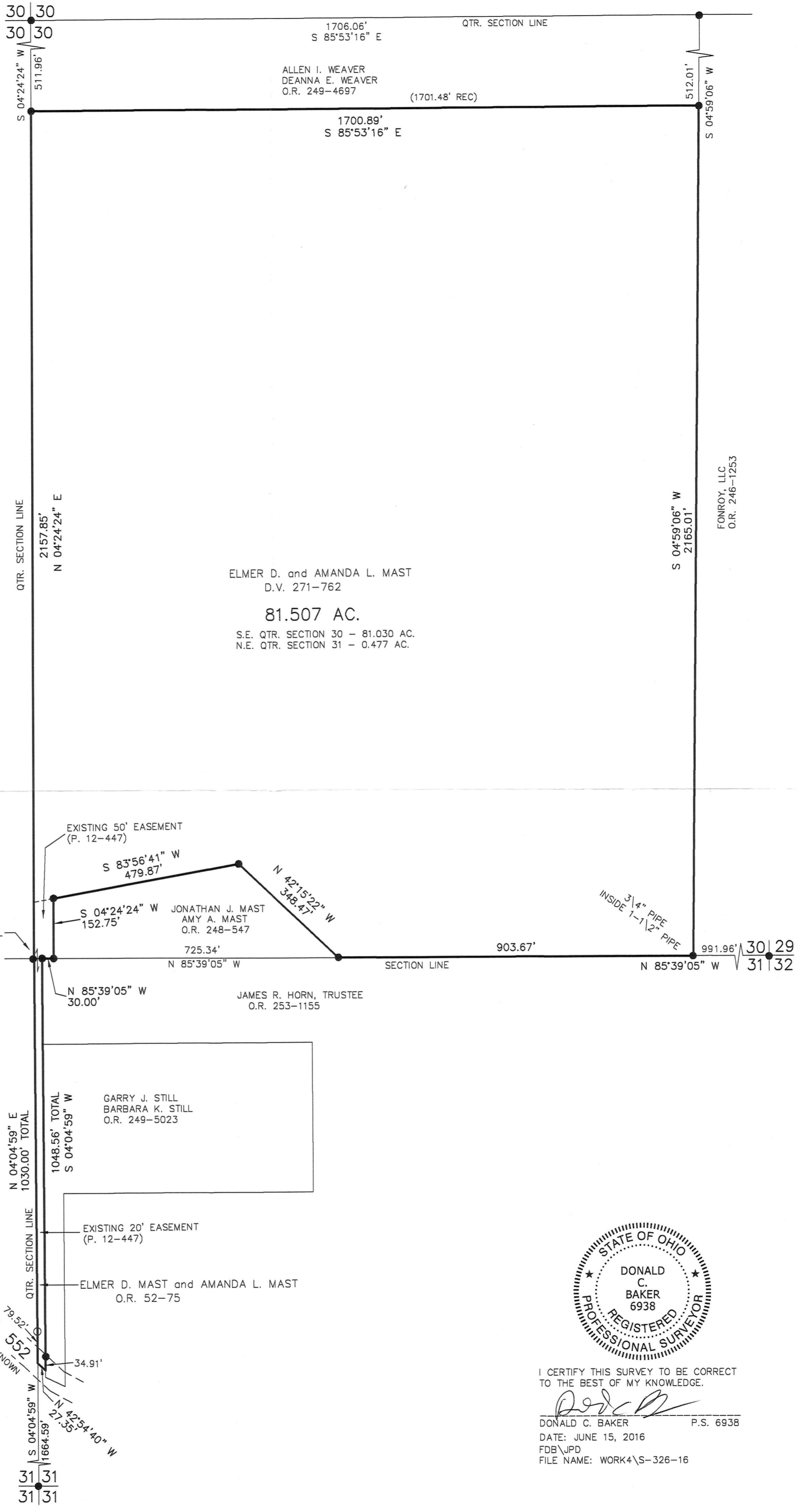
PRAIRIE TOWNSHIP  
 S.E. QTR. SECTION 30  
 N.E. QTR. SECTION 31  
 T-14 N; R-13 W  
 HOLMES COUNTY, OHIO

SURVEYED FOR: ELMER MAST



- 5/8" REBAR FOUND UNLESS OTHERWISE NOTED
- 5/8" REBAR SET WITH I.D. CAP I.D. CAP MARKED "BAKER 6938"

- REFERENCES
- DEED VOL. 271 PAGE 762
  - O.R. VOL. 52 PAGE 75
  - O.R. VOL. 249 PAGE 4697
  - O.R. VOL. 246 PAGE 1253
  - O.R. VOL. 253 PAGE 1155
  - O.R. VOL. 249 PAGE 5023
  - PLAT VOL. 7 PAGE 807
  - PLAT VOL. 19 PAGE 2778
  - PLAT VOL. 19 PAGE 553
  - PLAT VOL. 2 PAGE 529
  - PLAT VOL. 14 PAGE 501
  - BEARINGS FROM PLAT VOL. 19 PAGE 2778



I CERTIFY THIS SURVEY TO BE CORRECT TO THE BEST OF MY KNOWLEDGE.

*Donald C. Baker*  
 DONALD C. BAKER P.S. 6938  
 DATE: JUNE 15, 2016  
 FDB/JPD  
 FILE NAME: WORK4\S-326-16

BAKER SURVEYING, LLC  
 138 N. CLAY STREET  
 MILLERSBURG, OHIO 44654  
 PH. 330-674-4788  
 FAX 330-674-6027

PLAT APPROVED

APPROVED FOR TRANSFER ONLY  
 NO SUBDIVISION PLAT REQUIRED  
 (O.R.C. 711.001 & 711.131)  
 Lot(s) not for building unless approved by Board of Health.  
 HOLMES CO. PLANNING COMMISSION  
 By: *[Signature]* Date: *7-6-16*

*7/1/2016*