

8 0 2 6 9 7 6  
TX:4017314

**SYMBOLS**

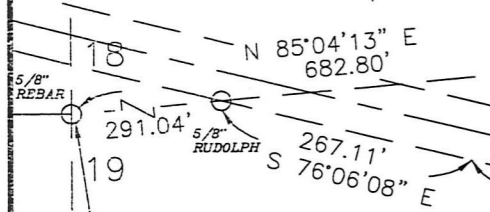
- △=POST FOUND
- ⊕=STONE FOUND
- =RAILROAD SPIKE FOUND
- =7/8" IRON PIPE FOUND (UNLESS NOTED)
- =RAILROAD SPIKE SET
- =5/8" IRON PIN SET WITH CAP STAMPED
- ⊗=MAG NAIL FOUND
- POC=POINT OF COMMENCEMENT
- POB=POINT OF BEGINNING

- =EXISTING PROPERTY LINE
- =CENTER LINE
- =PROPOSED OR SUBJECT LINE
- =R/W LINE
- X X X X X=X FENCE LINE

T.M.P.=CURRENT TAX MAP PARCEL ID  
(R), (M), (C)=RECORD, MEASURED, CALCULATED

BEARINGS ARE BASED ON GPS OBSERVATIONS, RTK METHOD USING THE ODOT VRS NETWORK, NAD 83. DISTANCES ARE MEASURED UNLESS OTHERWISE STATED. ANGLES ARE IN DEG - MIN - SEC. DISTANCES ARE IN FEET

CALCULATED CORNER FROM DARR SURVEY, DATED 09/14/2007, p. 19-1429



POC  
NW CORNER,  
NW 1/4, **201600101291**  
SECTION 19 B: 19 P: 3052  
FILED FOR RECORD IN  
HOLMES COUNTY, OH  
ANITA HALL, COUNTY RECORDER  
09/06/2016 3:29 PM  
SMALL PLAT . 40.00  
PAGES: 1  
ORV 257 PG 4143

I HEREBY CERTIFY THIS PLAT TO BE A TRUE DELINEATION OF A FIELD SURVEY IN JULY, 2016.

*Ronald L. Laughery*  
RONALD L. LAUGHERY  
REGISTERED SURVEYOR #6111



**REFERENCES**

- ALL DEEDS SHOWN
- PLAT BOOK 6, PAGE 160
- PLAT BOOK 19, PAGE 1429
- PLAT BOOK 8, PAGE 255
- PLAT BOOK 6, PAGE 160
- PLAT BOOK 7, PAGE 792
- PLAT BOOK 10, PAGE 217
- PLAT BOOK 19, PAGE 1783

NOTE ON C.R. 23  
WE RECOVERED MONUMENTS FOR THE SOUTH SIDE OF C.R. 23 CALLED FOR IN THE SURVEY RECORDED IN PLAT BOOK 19, PAGE 1783. THE 321.52' TANGENT AND THE CURVES C3 AND C4 DO NOT MATCH THE TANGENT LENGTH AND CURVATURE CALLED FOR IN COURSES 13 AND 14 IN D.V. 113-507. WE HELD THE ALIGNMENT BETWEEN THE TWO PINS FOUND AT THE END OF THE 321.52' TANGENT CALLED FOR IN PLAT BOOK 19, PAGE 1783 AND ADJUSTED THE LENGTH SO THAT USING THE ALIGNMENT CALLED FOR IN D.V. 113-507 WE HIT THE RUDOLPH PIN ON THE SOUTH SIDE OF C.R. 23 THAT IS 291.04' EAST OF THE PIN AT THE NORTHWEST CORNER OF SECTION 19.

**CURVE DIMENSIONS**

CURVE	RADIUS	ARC LENGTH	TANGENT	DELTA ANGLE	CHORD BEARING	CHORD LENGTH
C1	1402.00'	773.06'	396.63'	31°35'34"	S 88°51'51" E	763.30'
C2	2895.00'	767.96'	386.25'	15°11'56"	N 83°40'45" E	765.71'
C3	5760.00'	1268.61'	636.88'	12°37'09"	S 82°24'42" E	1266.04'
C4	1462.00'	81.22'	40.62'	03°10'58"	S 76°56'46" W	81.21'
C5	2835.00'	650.96'	326.92'	13°09'21"	S 82°39'28" W	649.53'

APPROVED FOR TRANSFER ONLY  
NO SUBDIVISION PLAT REQUIRED

(O.R.C. 711.001 & 711.131)  
Lot(s) not for building unless approved by Board of Health.



HOLMES CO. PLANNING COMMISSION  
By: *[Signature]* Date: 9-6-16

**CORNER TO MONUMENT DIMENSIONS**

LINE	BEARING	DISTANCE
R1	S 49°54'30" E	47.00'

**LINE DIMENSIONS**

LINE	BEARING	DISTANCE
L1	N 49°54'30" W	40.64'
L2	S 49°54'30" E	68.14'
L3	N 55°56'17" W	60.62'
L4	N 78°44'19" E	165.69'
L5	S 62°14'10" W	44.78'
L6	S 76°04'48" W	164.44'
L7	N 40°15'05" E	60.84'
L8	N 40°15'05" E	153.16'

PLAT OF A SURVEY TO LOCATE AND DESCRIBE A PORTION OF A TRACT OF LAND CONVEYED TO JAMES E. YOHO BY DEED RECORDED IN OFFICIAL RECORDS VOLUME 0208, PAGE 0749.



PLAT APPROVED

*9/6/2016*

TOTAL  
15.015 ACRES

(TRACT 1, 10.374 ACRES)

(TRACT 2, 4.641 ACRES)

DOUGLAS K. HEFFELFINGER  
D.V. 210-291  
D.V. 275-524

JAMES E. YOHO  
O.R. 208-749

AARON D. STACY & KRISTA L. ANDRE  
O.R. 246-3264

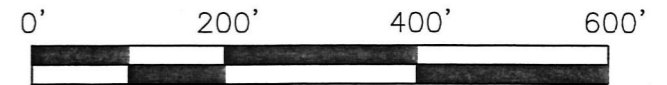
JOHN J. COBLENTZ  
KATIE MAE COBLENTZ  
O.R. 250-526

ROBERT A. HESS  
AND  
JANET E. HESS  
O.R. 247-3507

WASHINGTON TWP.  
911.17'  
KNOX TWP.  
(TRACT 2, 4.641 ACRES)

C.R. 23, 60' WIDE,  
COUNTY OF HOLMES  
D.V. 113-507

T.R. 451  
(33' R/W)



LAUGHERY, INC.  
ENGINEERING & SURVEYING  
967 US 42  
ASHLAND, OHIO 44805

SW 1/4, SECTION 18, T-19-N, R-15-W, WASHINGTON TWP.  
NW 1/4, SECTION 19, T-19-N, R-15-W, KNOX TWP.  
HOLMES COUNTY, OHIO

DRAWN BY RLL DATE 07/27/16 SCALE 1"=200'