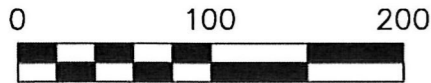


RIPLEY TOWNSHIP  
S.E. QTR. SECTION 14  
T-17 N; R-14 W  
HOLMES COUNTY, OHIO

SURVEYED FOR: DAVID NALLY



SCALE: 1"=100'

- ▲ R.R. SPIKE FOUND
- 5/8" REBAR FOUND  
UNLESS OTHERWISE NOTED
- 5/8" REBAR SET WITH I.D. CAP  
I.D. CAP MARKED "BAKER 6938"



I CERTIFY THIS SURVEY TO BE CORRECT  
TO THE BEST OF MY KNOWLEDGE.

*Donald C. Baker*

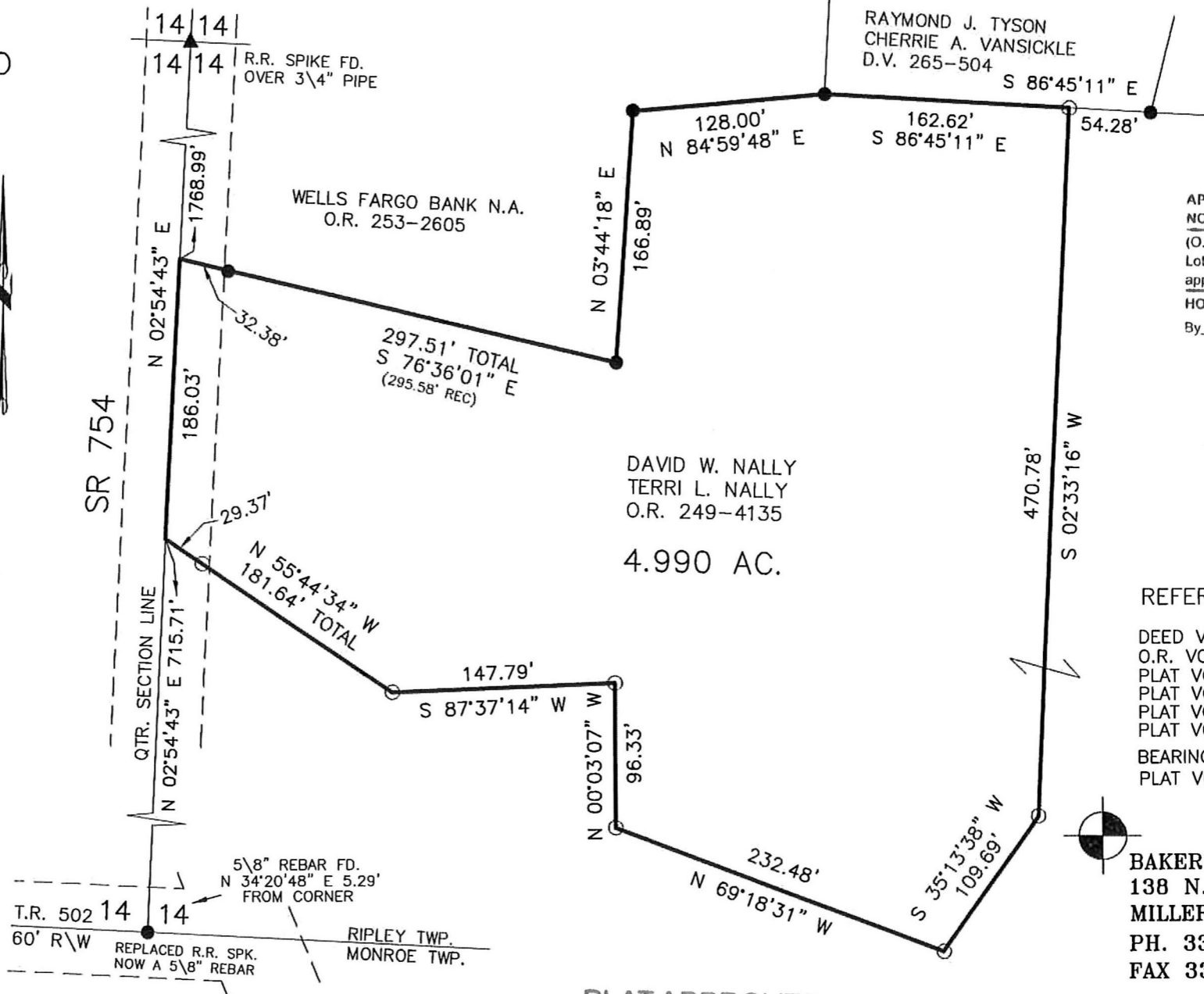
DONALD C. BAKER P.S. 6938

DATE: AUG. 2, 2016

KES\JNG

FILE NAME: WORK4\S-395-16

8 0 2 6 6 3 5  
1x:4017223



201600101185

B: 19 P: 3046

FILED FOR RECORD IN  
HOLMES COUNTY, OH  
ANITA HALL, COUNTY RECORDER  
08/29/2016 1:26 PM  
SMALL PLAT . 40.00  
PAGES: 1

ORV 257 P3470

APPROVED FOR TRANSFER ONLY  
NO SUBDIVISION PLAT REQUIRED

(O.R.C. 711.001 & 711.131)

Lot(s) not for building unless  
approved by Board of Health.



HOLMES CO. PLANNING COMMISSION

By *[Signature]* Date *8-24-16*

REFERENCES

- DEED VOL. 265 PAGE 504
- O.R. VOL. 249 PAGE 4135
- PLAT VOL. 15 PAGE 35
- PLAT VOL. 17 PAGE 792
- PLAT VOL. 14 PAGE 834
- PLAT VOL. 17 PAGE 484
- BEARINGS FROM  
PLAT VOL. 15 PAGE 35

BAKER SURVEYING, LLC  
138 N. CLAY STREET  
MILLERSBURG, OHIO 44654  
PH. 330-674-4788  
FAX 330-674-6027

PLAT APPROVED

8/22/2016 TD