

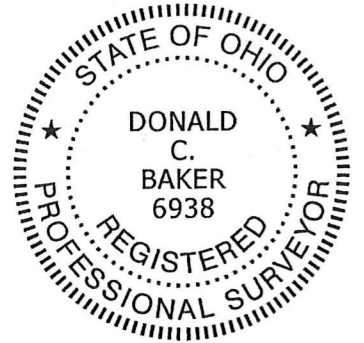
SCALE: 1"=100'

- 5/8" REBAR FOUND UNLESS OTHERWISE NOTED
- 5/8" REBAR SET WITH I.D. CAP I.D. CAP MARKED "BAKER 6938"

REFERENCES

- O.R. VOL. 205 PAGE 1157
- O.R. VOL. 250 PAGE 4327
- O.R. VOL. 253 PAGE 6351
- PLAT VOL. 3 PAGE 73
- PLAT VOL. 18 PAGE 755
- PLAT VOL. 19 PAGE 808
- PLAT VOL. 19 PAGE 2583
- BEARINGS FROM PLAT VOL. 19 PAGE 2583

APPROVED FOR TRANSFER ONLY
 NO SUBDIVISION PLAT REQUIRED
 (O.R.C. 711.001 & 711.131)
 Lot(s) not for building unless approved by Board of Health.
HCPC
 HOLMES CO. PLANNING COMMISSION
 By: A Date: 3/23/16



25 | 24 156.66'
 5 | 4 S 88°11'05" E T-8 N, R-4 W

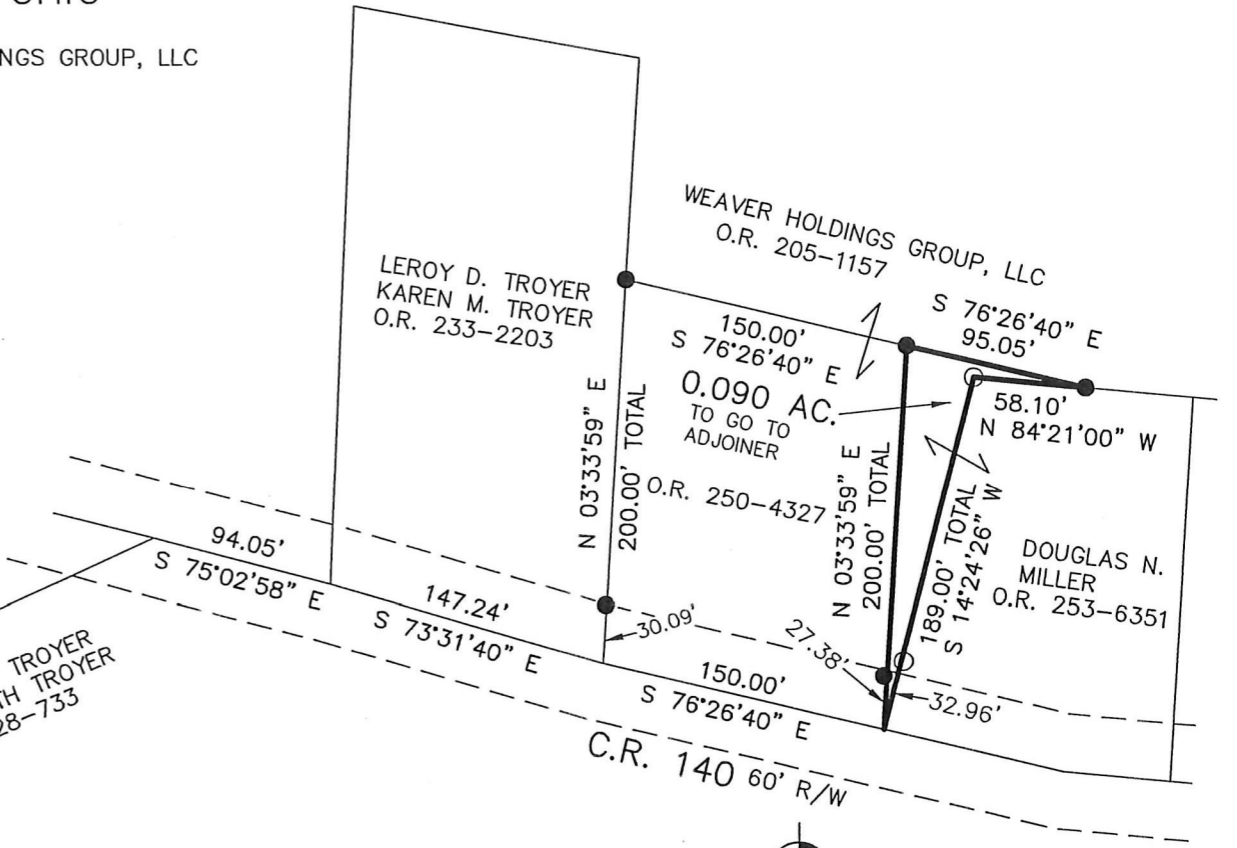
LOYAL EUGENE STUTZMAN, TRUSTEE O.R. 192-595
 N 65°35'02" E 310.11'
 JAMES RAY TROYER
 VELMA RUTH TROYER O.R. 28-733

WALNUT CREEK TOWNSHIP
 S.W. QTR. SECTION 24
 T-9 N; R-4 W
 HOLMES COUNTY, OHIO

SURVEYED FOR: WEAVER HOLDINGS GROUP, LLC

ORIGINAL PLAT FILED WITH MAP OFFICE ANITA HALL, RECORDER

201600099834
 B: 19 P: 2982
 FILED FOR RECORD IN
 HOLMES COUNTY, OH
 ANITA HALL, COUNTY RECORDER
 06/02/2016 1:20 PM
 SMALL PLAT . 40.00
 PAGES: 1
 ORV256 PG 3570



I CERTIFY THIS SURVEY TO BE CORRECT TO THE BEST OF MY KNOWLEDGE.

Donald C. Baker

DONALD C. BAKER P.S. 6938
 DATE: MARCH 28, 2016
 KES\JPD
 FILE NAME: WORK4\S-172-16

BAKER SURVEYING, LLC
 138 N. CLAY STREET
 MILLERSBURG, OHIO 44654
 PH. 330-674-4788
 FAX 330-674-6027

PLAT APPROVED

5/23/2016 TD