

KILLBUCK TOWNSHIP
S.E. QTR. SECTION 8
T-8 N; R-8 W
HOLMES COUNTY, OHIO

SURVEYED FOR: STEVE WEAVER



SCALE: 1"=200'

- STONE FOUND
- 5/8" REBAR FOUND
UNLESS OTHERWISE NOTED
- 5/8" REBAR SET WITH I.D. CAP
I.D. CAP MARKED "BAKER 6938"

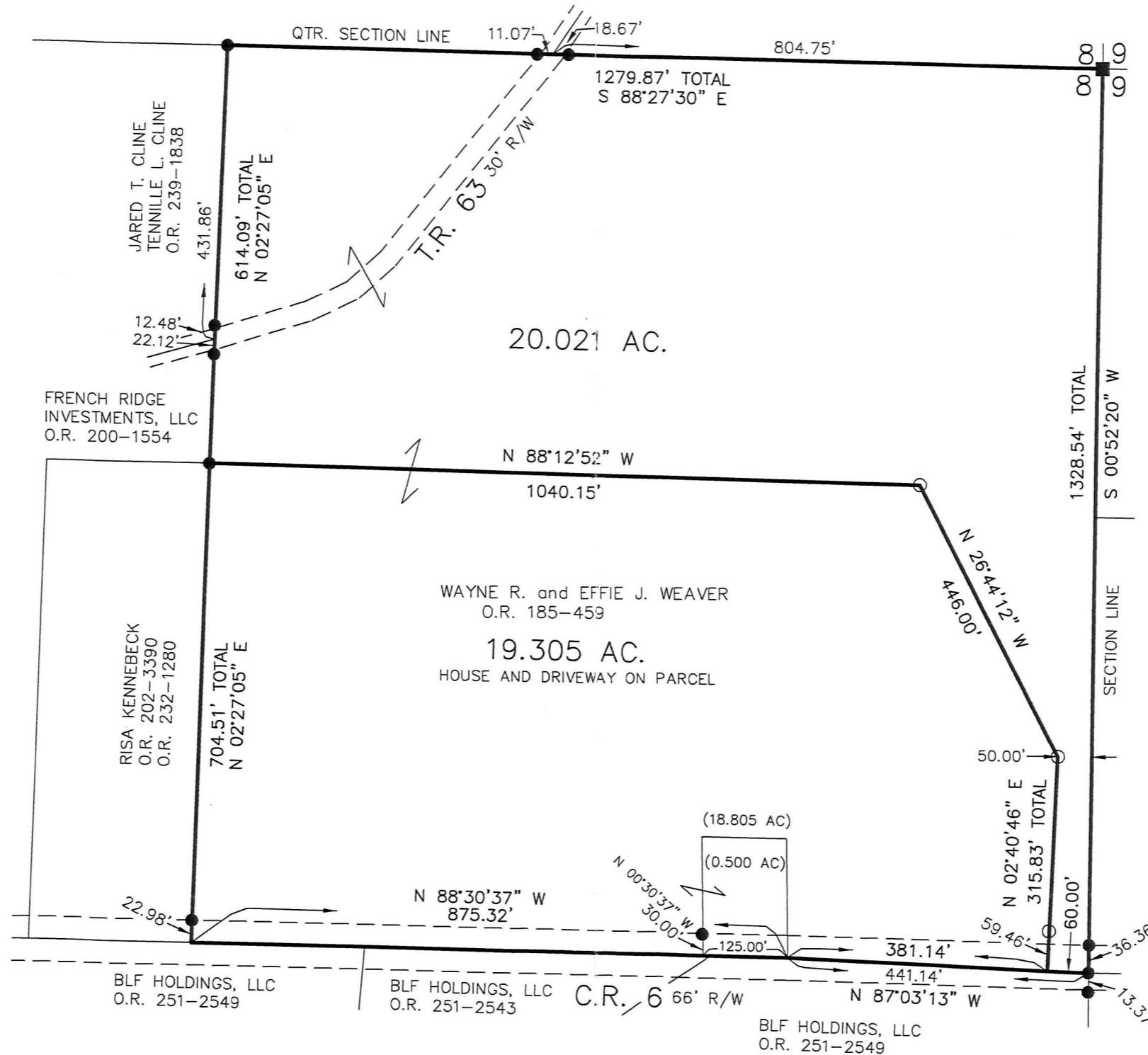
REFERENCES

- O.R. VOL. 185 PAGE 459
- O.R. VOL. 200 PAGE 1554
- O.R. VOL. 232 PAGE 1280
- O.R. VOL. 239 PAGE 1838
- O.R. VOL. 251 PAGE 2549

- PLAT VOL. 7 PAGE 109
- PLAT VOL. 19 PAGE 192
- PLAT VOL. 16 PAGE 501
- PLAT VOL. 19 PAGE 1168
- PLAT VOL. 19 PAGE 2166
- PLAT VOL. 19 PAGE 2669
- PLAT VOL. 14 PAGE 918
- PLAT VOL. 19 PAGE 1506

BEARINGS FROM
PLAT VOL. 19 PAGE 1506

BAKER SURVEYING, LLC
138 N. CLAY STREET
MILLERSBURG, OHIO 44654
PH. 330-674-4788
FAX 330-674-6027



201600099785
B: 19 P: 2979
FILED FOR RECORD IN
HOLMES COUNTY, OH
ANITA HALL, COUNTY RECORDER
05/31/2016 9:52 AM
SMALL PLAT - 40.00
PAGES: 1

CRV 256 PG 3274

PLAT APPROVED

5/26/2016 TD

APPROVED FOR TRANSFER ONLY
NO SUBDIVISION PLAT REQUIRED

(O.R.C. 711.001 & 711.131)
Lot(s) not for building unless
approved by Board of Health.



HOLMES CO. PLANNING COMMISSION

By: *[Signature]* Date: 2-25-16



I CERTIFY THIS SURVEY TO BE CORRECT
TO THE BEST OF MY KNOWLEDGE.

[Signature]

DONALD C. BAKER P.S. 6938

DATE: FEB. 19, 2016

FDB/KES

FILE NAME: WORK4\S-108-16

