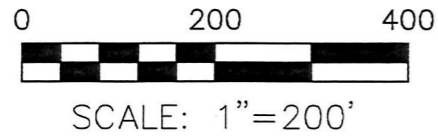


ORV 255 PG 6200



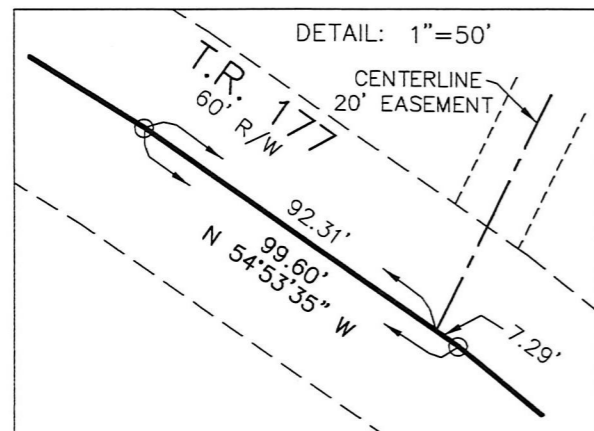
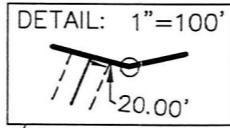
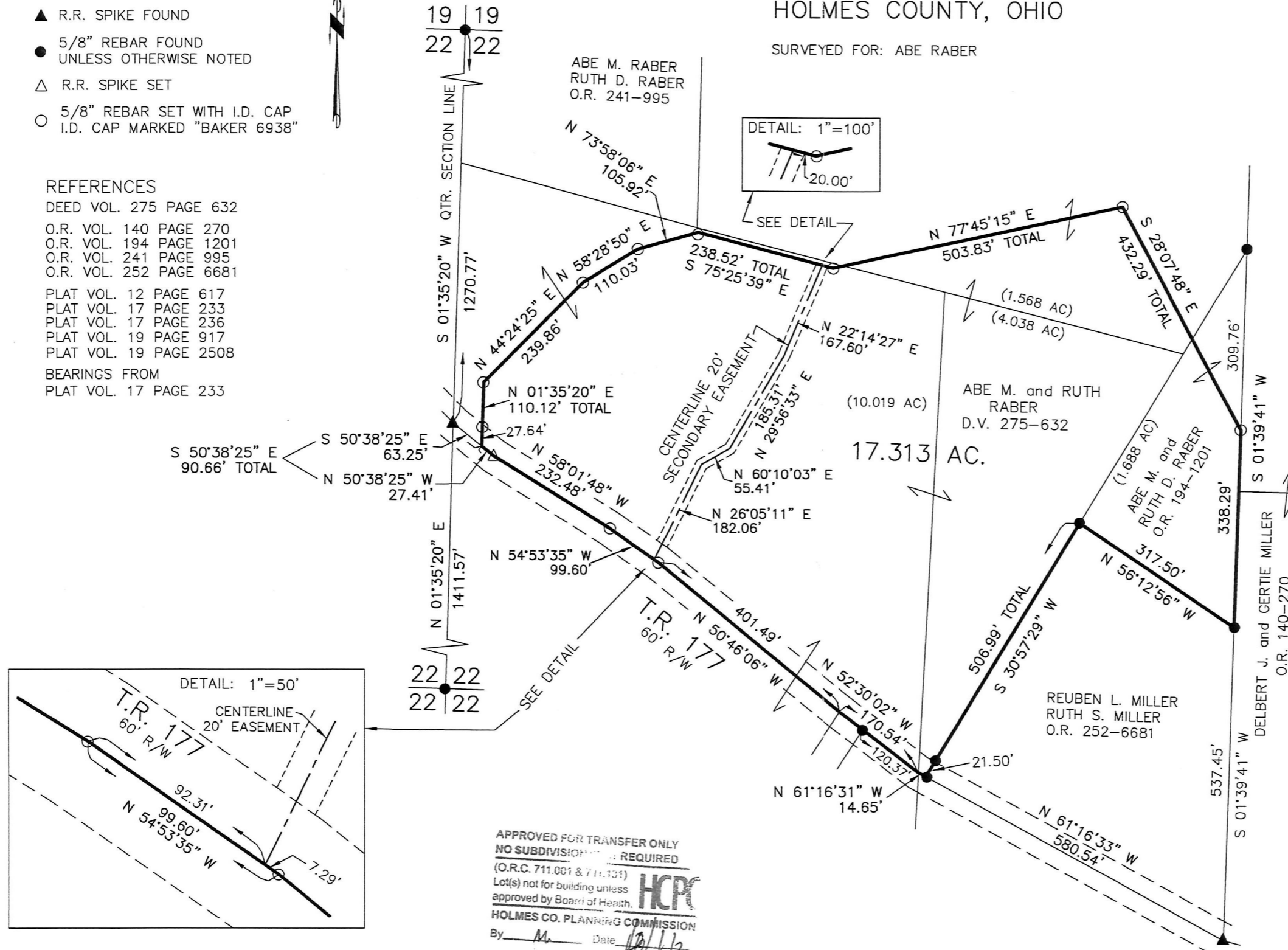
- ▲ R.R. SPIKE FOUND
- 5/8" REBAR FOUND
UNLESS OTHERWISE NOTED
- △ R.R. SPIKE SET
- 5/8" REBAR SET WITH I.D. CAP
I.D. CAP MARKED "BAKER 6938"

REFERENCES

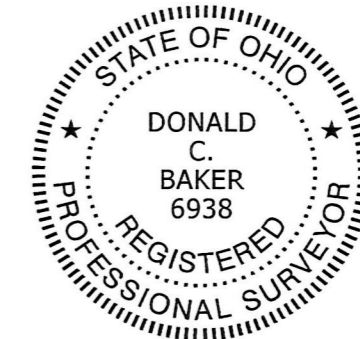
- DEED VOL. 275 PAGE 632
- O.R. VOL. 140 PAGE 270
- O.R. VOL. 194 PAGE 1201
- O.R. VOL. 241 PAGE 995
- O.R. VOL. 252 PAGE 6681
- PLAT VOL. 12 PAGE 617
- PLAT VOL. 17 PAGE 233
- PLAT VOL. 17 PAGE 236
- PLAT VOL. 19 PAGE 917
- PLAT VOL. 19 PAGE 2508
- BEARINGS FROM
PLAT VOL. 17 PAGE 233

CLARK TOWNSHIP
 N.E. QTR. SECTION 22
 T-8 N; R-5 W
 HOLMES COUNTY, OHIO

SURVEYED FOR: ABE RABER



APPROVED FOR TRANSFER ONLY
 NO SUBDIVISION REQUIRED
 (O.R.C. 711.001 & 711.131)
 Lot(s) not for building unless
 approved by Board of Health.
HCP
 HOLMES CO. PLANNING COMMISSION
 By M Date 10/16



I CERTIFY THIS SURVEY TO BE CORRECT
 TO THE BEST OF MY KNOWLEDGE.

Donald C. Baker

DONALD C. BAKER P.S. 6938
 DATE: NOV. 24, 2015
 FDB\KES\JPD
 FILE NAME: WORK4\S-612-15



DONALD C. BAKER SURVEYING
 138 N. CLAY STREET
 MILLERSBURG, OHIO 44654
 PH. 330-674-4788
 FAX 330-674-6027

PLAT APPROVED

12/28/15