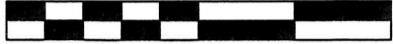


APPROVED FOR TRANSFER ONLY  
 NO SUBDIVISION PLAT REQUIRED  
 (O.R.C. 711.001 & 711.131)  
 Lot(s) not for building unless  
 approved by Board of Health  
 HOLMES CO. PLANNING COMMISSION  
 By WJ Date 3-10-16

0 300 600



SCALE: 1"=300'

- STONE FOUND
- MAG NAIL FOUND
- 5/8" REBAR FOUND UNLESS OTHERWISE NOTED
- 5/8" REBAR SET WITH I.D. CAP I.D. CAP MARKED "BAKER 6938"

CLARK TOWNSHIP  
 S.W. QTR. SECTION 23  
 T-8 N; R-5 W  
 HOLMES COUNTY, OHIO

SURVEYED FOR: ATTY SAM STEIMEL

201600098687

B: 19 P: 2931  
 FILED FOR RECORD IN  
 HOLMES COUNTY, OH  
 ANITA HALL, COUNTY RECORDER  
 03/21/2016 1:58 PM  
 SMALL PLAT . 40.00  
 PAGES: 1

ORV 255 Pg 4850, 4858

REFERENCES

- O.R. VOL. 87 PAGE 662
- O.R. VOL. 212 PAGE 769
- O.R. VOL. 236 PAGE 1860
- O.R. VOL. 254 PAGE 6030
- PLAT VOL. 11 PAGE 152
- PLAT VOL. 18 PAGE 481
- PLAT VOL. 19 PAGE 1816
- PLAT VOL. 19 PAGE 2041
- BEARINGS FROM  
 PLAT VOL. 19 PAGE 2041

24 | 23 QTR. SECTION LINE N 89°45'35" E

24 | 23 1319.19'

3"X6" STONE WITH "X"

7"X12" STONE WITH "X"

ROMAN D. YODER  
 D.V. 207-530  
 O.R. 254-6030

81.407 AC.

SECTION LINE N 00°07'19" E  
 2549.60' TOTAL

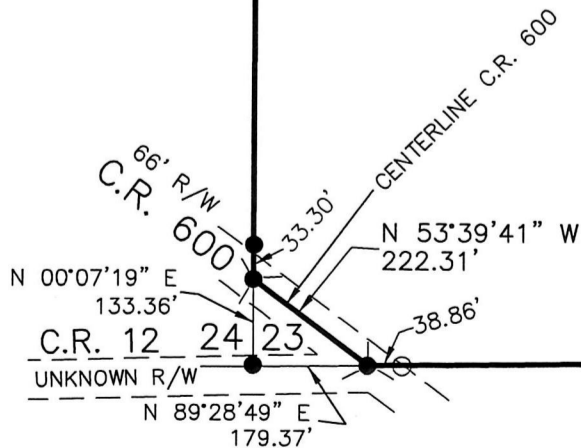
GLEENDA WISE  
 DEAN R. SHUTT  
 OWEN R. SHUTT  
 PAUL R. SHUTT  
 O.R. 87-662

PAMELA C. TULLOSS  
 CYNTHIA A. SCHEETZ  
 LORINDA S. SMITH  
 O.R. 236-1860

S 00°14'48" E  
 2676.39'

MERVIN A. HERSHBERGER  
 KATIE R. MAST  
 O.R. 132-848

JUNIOR L. TROYER  
 O.R. 212-769



HOLMES CO.  
 1157.09' TOTAL SECTION LINE  
 S 89°28'49" W  
 COSHOCTON CO.

1/2" PIPE

212.06'

3/4" BAR

I CERTIFY THIS SURVEY TO BE CORRECT TO THE BEST OF MY KNOWLEDGE.

Donald C. Baker  
 DONALD C. BAKER P.S. 6938  
 DATE: JAN. 19, 2016  
 FDB\KES\CJG  
 FILE NAME: WORK4\S-40-16



BAKER SURVEYING, LLC  
 138 N. CLAY STREET  
 MILLERSBURG, OHIO 44654  
 PH. 330-674-4788  
 FAX 330-674-6027

PLAT APPROVED

3/15/2016