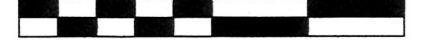


ORV 255 4893

RICHLAND TOWNSHIP
 S.W. QTR. SECTION 12
 N.E. QTR. SECTION 18
 N.W. QTR. SECTION 19
 T-8 N; R-9 W
 HOLMES COUNTY, OHIO

SURVEYED FOR: PETRONILLA SCHOPFER

0 300 600

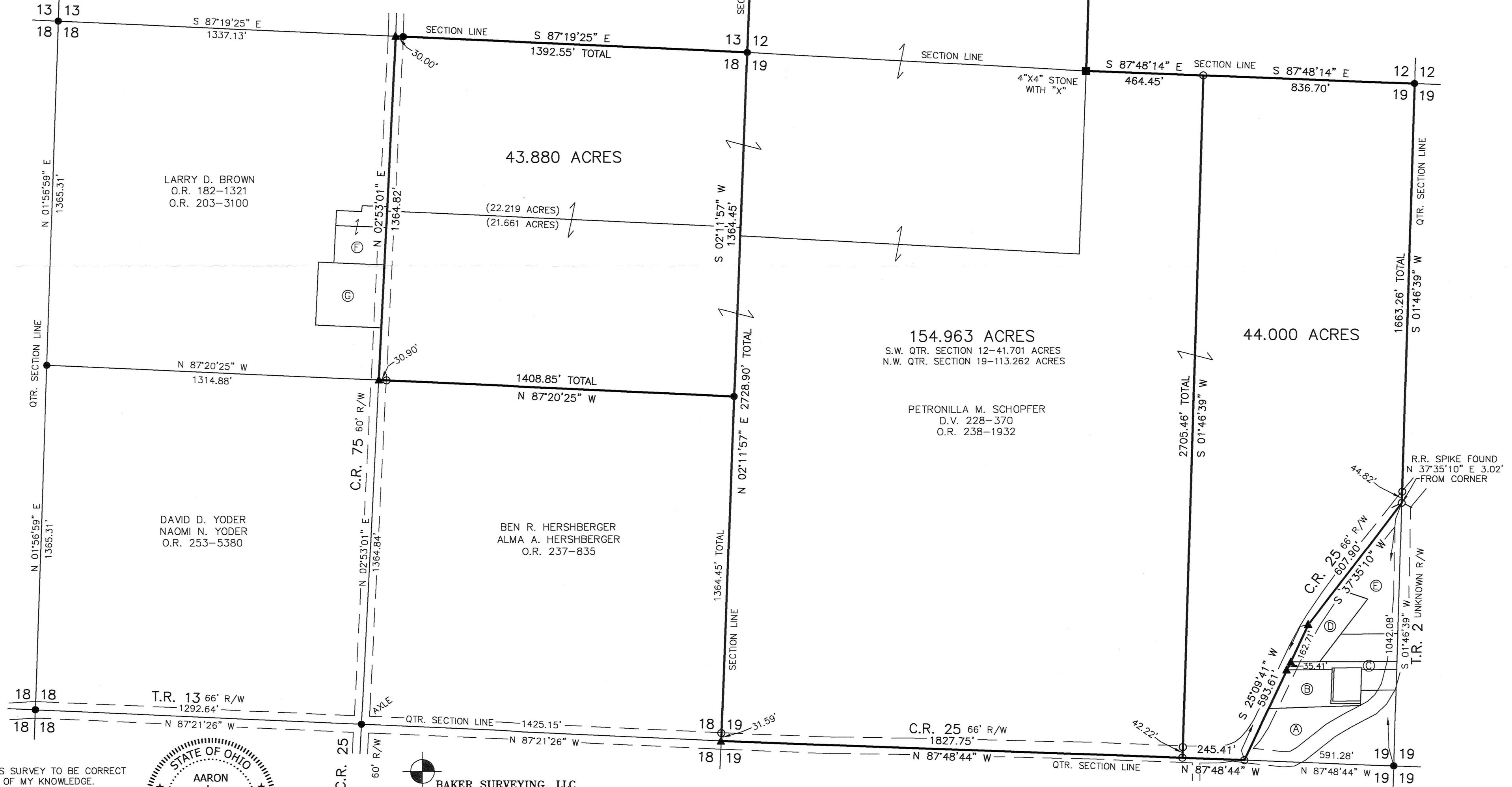


SCALE: 1"=300'

- STONE FOUND
- ▲ R.R. SPIKE FOUND
- 5/8" REBAR FOUND UNLESS OTHERWISE NOTED
- MAG NAIL SET
- 5/8" REBAR SET WITH I.D. CAP I.D. CAP MARKED "BAKER 6938"

- REFERENCES
- (A) UNION GROVE CHURCH
D.V. 218-499
 - (B) UNION GROVE CEMETERY ASSOCIATION, INC.
D.V. 218-876
 - (C) UNION GROVE CEMETERY ASSOCIATION, INC.
D.V. 221-684
 - (D) RICHLAND TOWNSHIP TRUSTEES,
HOLMES COUNTY OHIO
D.V. 221-892
 - (E) BARNES FAMILY FARM, LTD.
O.R. 48-72
 - (F) LESTER H. CONNER
D.V. 259-260
 - (G) MANDI L. BROWN
RODNEY S. HOWARD
O.R. 56-427

- REFERENCES
- DEED VOL. 218 PAGE 499
 - DEED VOL. 218 PAGE 876
 - DEED VOL. 221 PAGE 684
 - DEED VOL. 221 PAGE 892
 - DEED VOL. 228 PAGE 370
 - O.R. VOL. 48 PAGE 72
 - O.R. VOL. 203 PAGE 3100
 - O.R. VOL. 210 PAGE 800
 - O.R. VOL. 237 PAGE 835
 - O.R. VOL. 238 PAGE 1932
 - O.R. VOL. 241 PAGE 2209
 - O.R. VOL. 253 PAGE 5380
 - PLAT VOL. 10 PAGE 60
 - PLAT VOL. 10 PAGE 76
 - PLAT VOL. 10 PAGE 201
 - PLAT VOL. 16 PAGE 340
 - PLAT VOL. 16 PAGE 446
 - PLAT VOL. 16 PAGE 930
 - PLAT VOL. 17 PAGE 590
 - PLAT VOL. 19 PAGE 2782
 - PLAT VOL. 19 PAGE 2819
- BEARINGS FROM PLAT VOL. 16 PAGE 930



I CERTIFY THIS SURVEY TO BE CORRECT TO THE BEST OF MY KNOWLEDGE.

Aaron L. Gerber
 Aaron L. Gerber P.S. 8379
 Date: January 28, 2016
 File Name: WORK5\S-34-16\ALG



BAKER SURVEYING, LLC
 138 N. CLAY STREET
 MILLERSBURG, OHIO 44654
 PH. 330-674-4788
 FAX 330-674-6027
 EMAIL: bakersurveying@gmail.com

PLAT APPROVED

3/11/2016 TD

APPROVED FOR TRANSFER ONLY
 NO SUBDIVISION PLAT REQUIRED
 (O.R.C. 711.001 & 711.131)
 Lot(s) not for building unless approved by Board of Health.
 HOLMES CO. PLANNING COMMISSION
 By: [Signature] Date: 3/11/16