

ORV 255 P3180

0 100 200



SCALE: 1"=100'

- STONE FOUND
- 5/8" REBAR FOUND
UNLESS OTHERWISE NOTED
- 5/8" REBAR SET WITH I.D. CAP
I.D. CAP MARKED "BAKER 6938"

REFERENCES

- DEED VOL. 231 PAGE 853
- PLAT VOL. 11 PAGE 83
- PLAT VOL. 14 PAGE 161
- PLAT VOL. 18 PAGE 789
- PLAT VOL. 19 PAGE 1962
- PLAT VOL. 19 PAGE 2616
- BEARINGS FROM
PLAT VOL. 19 PAGE 2616



I CERTIFY THIS SURVEY TO BE CORRECT
TO THE BEST OF MY KNOWLEDGE.

Donald C. Baker

DONALD C. BAKER P.S. 6938

DATE: JAN. 26, 2016

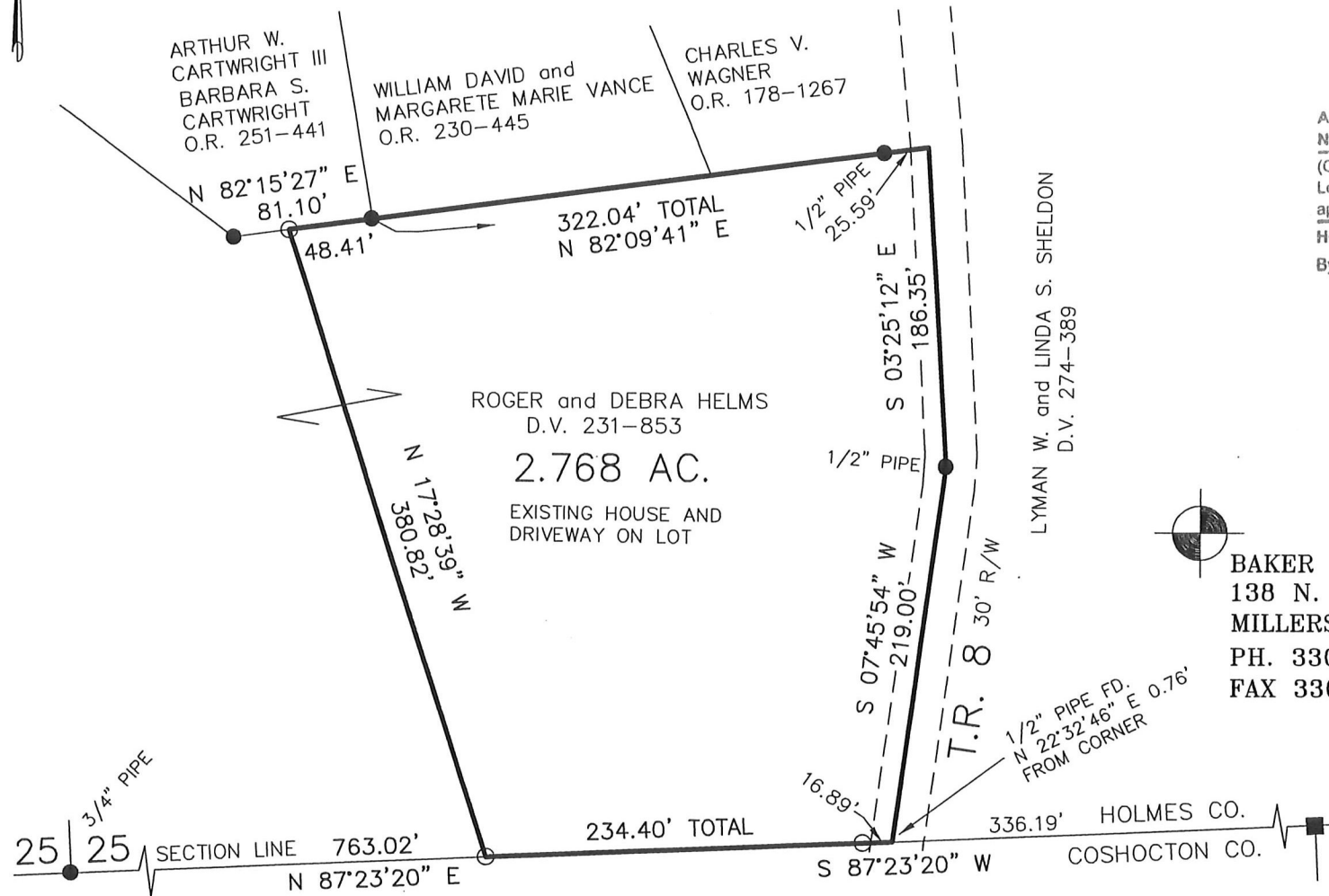
FDB\JPD

FILE NAME: WORK4\S-53-16



RICHLAND TOWNSHIP
S.E. QTR. SECTION 25
T-8 N; R-9 W
HOLMES COUNTY, OHIO

SURVEYED FOR: ROGER HELMS



APPROVED FOR TRANSFER ONLY
NO SUBDIVISION PLAT REQUIRED

(O.R.C. 711.001)
Lot(s) not for build.
approved by Board of
HOLMES CO. PLANNING COMMISSION
By: *[Signature]* Date: 2/24/16



BAKER SURVEYING, LLC
138 N. CLAY STREET
MILLERSBURG, OHIO 44654
PH. 330-674-4788
FAX 330-674-6027

PLAT APPROVED

2/19/2016