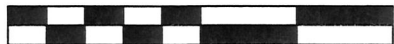




0 200 400



SCALE: 1"=200'

- ▲ R.R. SPIKE FOUND
- 5/8" REBAR FOUND UNLESS OTHERWISE NOTED
- 5/8" REBAR SET WITH I.D. CAP I.D. CAP MARKED "BAKER 6938"

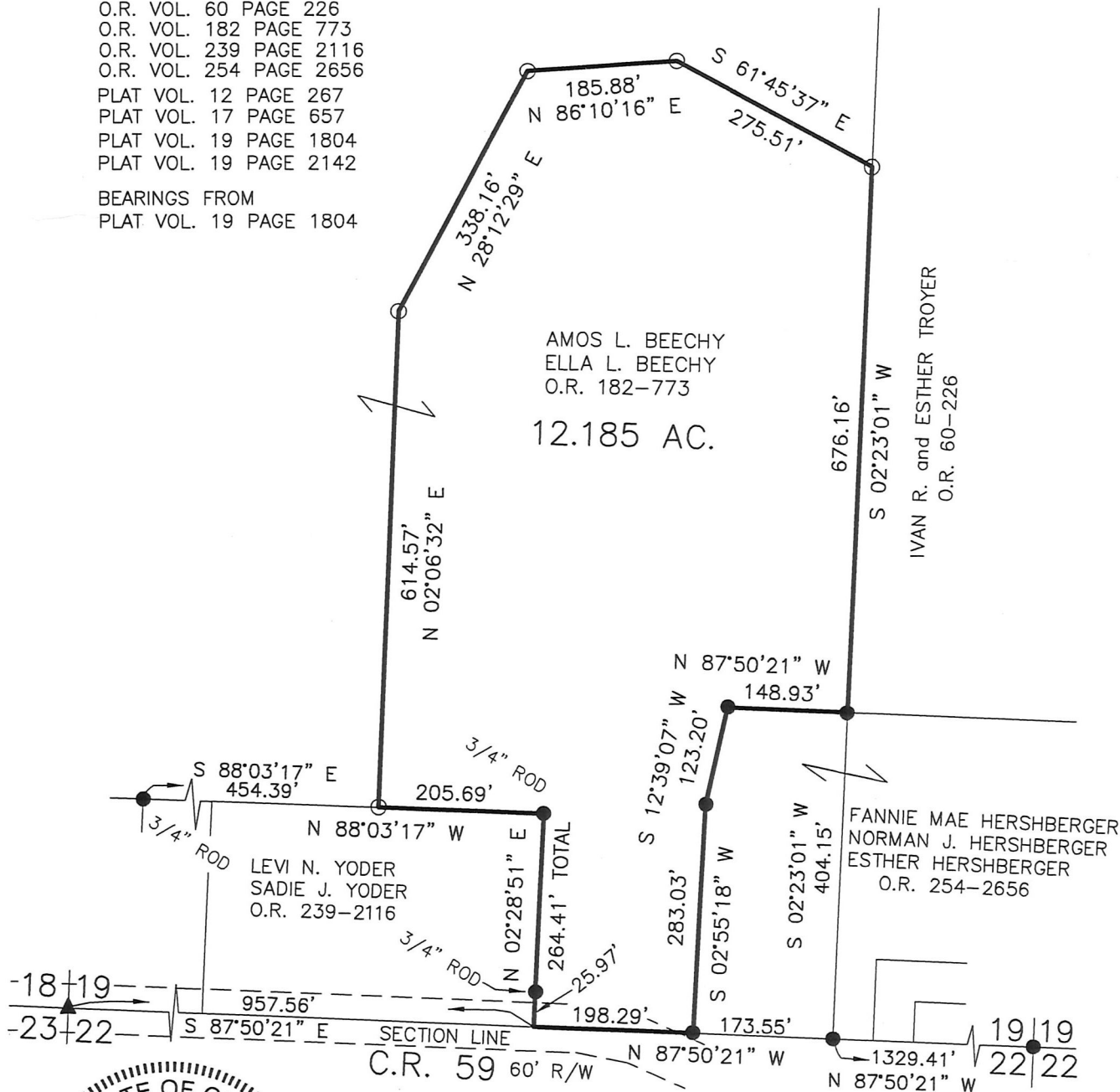


MECHANIC TOWNSHIP  
S.W. QTR. SECTION 19  
T-8 N; R-6 W  
HOLMES COUNTY, OHIO

SURVEYED FOR: ROY RABER

REFERENCES

- O.R. VOL. 60 PAGE 226
- O.R. VOL. 182 PAGE 773
- O.R. VOL. 239 PAGE 2116
- O.R. VOL. 254 PAGE 2656
- PLAT VOL. 12 PAGE 267
- PLAT VOL. 17 PAGE 657
- PLAT VOL. 19 PAGE 1804
- PLAT VOL. 19 PAGE 2142
- BEARINGS FROM  
PLAT VOL. 19 PAGE 1804



I CERTIFY THIS SURVEY TO BE CORRECT TO THE BEST OF MY KNOWLEDGE.

*Donald C. Baker*

DONALD C. BAKER P.S. 6938

DATE: JAN. 29, 2016

KES\JPD

FILE NAME: WORK4\S-46-16

APPROVED FOR TRANSFER ONLY  
NO SUBDIVISION PLAT REQUIRED

(O.R.C. 711.001 & 711.131)  
Lot(s) not for building unless approved by Board of Health.

HOLMES CO. PLANNING COMMISSION

By: *[Signature]* Date: 2-12-16



BAKER SURVEYING, LLC  
138 N. CLAY STREET  
MILLERSBURG, OHIO 44654  
PH. 330-674-4788  
FAX 330-674-6027

PLAT APPROVED

*2/11/2016*