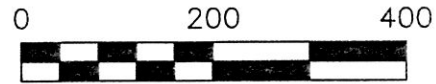


KILLBUCK TOWNSHIP
S.E. QTR. SECTION 22
T-8 N; R-8 W
HOLMES COUNTY, OHIO

SURVEYED FOR: KAUFMAN REALTY



SCALE: 1"=200'

- 5/8" REBAR FOUND
UNLESS OTHERWISE NOTED
- 5/8" REBAR SET WITH I.D. CAP
I.D. CAP MARKED "BAKER 6938"

REFERENCES

- O.R. VOL. 170 PAGE 2013
- O.R. VOL. 218 PAGE 1373
- O.R. VOL. 249 PAGE 3296
- PLAT VOL. 18 PAGE 330
- PLAT VOL. 17 PAGE 537
- PLAT VOL. 19 PAGE 2676
- PLAT VOL. 8 PAGE 42
- BEARINGS FROM
PLAT VOL. 18 PAGE 330



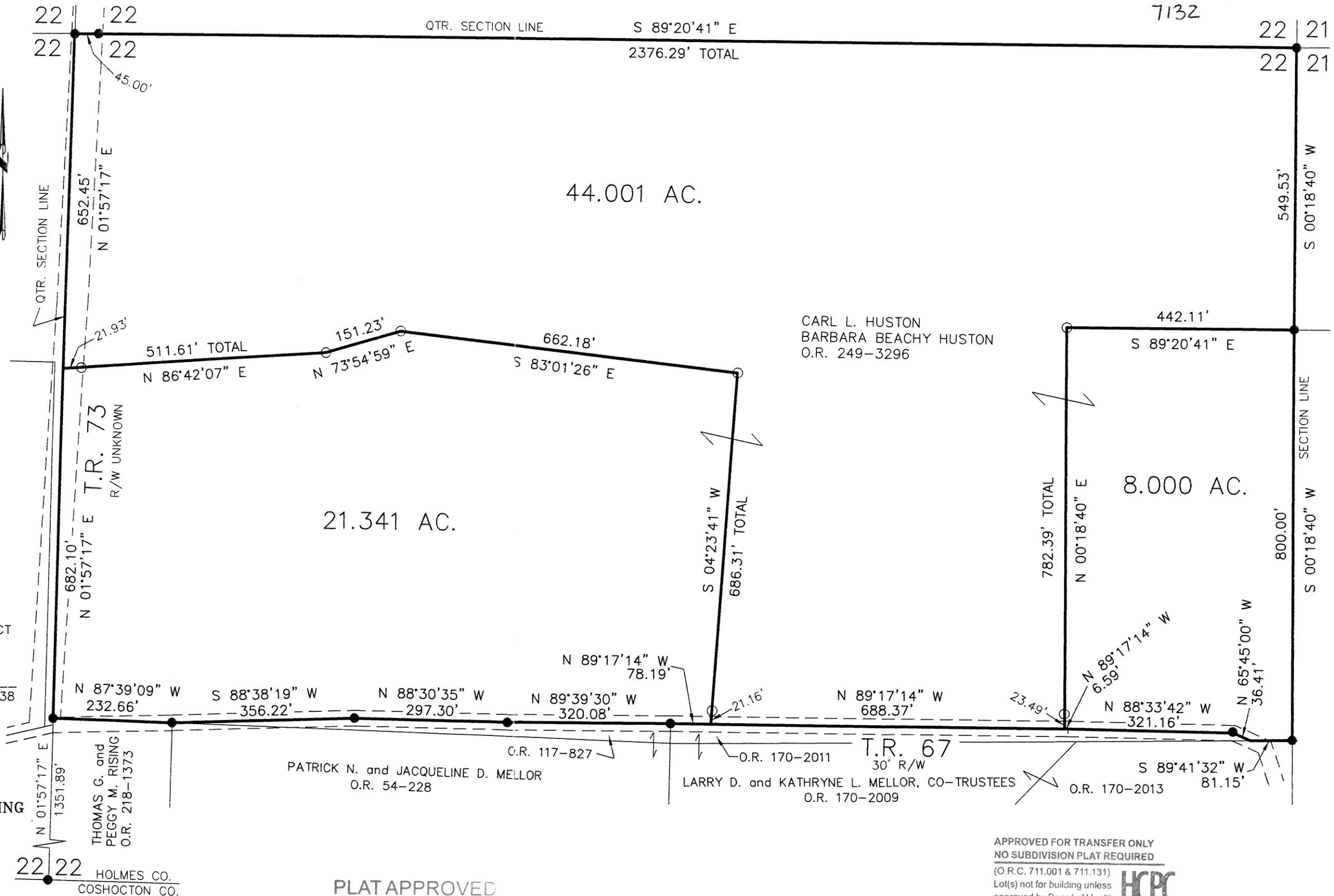
I CERTIFY THIS SURVEY TO BE CORRECT
TO THE BEST OF MY KNOWLEDGE.

Donald C. Baker

DONALD C. BAKER P.S. 6938
DATE: AUG. 21, 2015
FDB/CJG
FILE NAME: WORK4\S-339-15



DONALD C. BAKER SURVEYING
138 N. CLAY STREET
MILLERSBURG, OHIO 44654
PH. 330-674-4788
FAX 330-674-6027



PLAT APPROVED
9/18/15

APPROVED FOR TRANSFER ONLY
NO SUBDIVISION PLAT REQUIRED
(O.R.C. 711.001 & 711.131)
Lot(s) not for building unless
approved by Board of Health.
HOLMES CO. PLANNING COMMISSION
By: *[Signature]* Date: 10-7-15