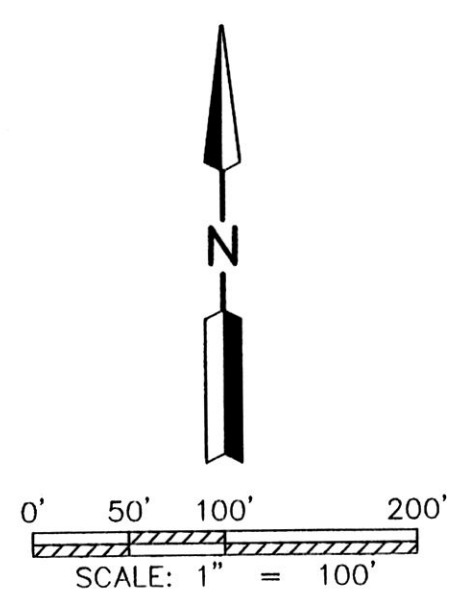
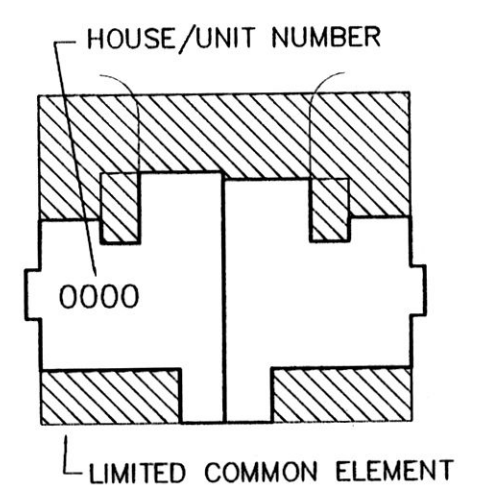
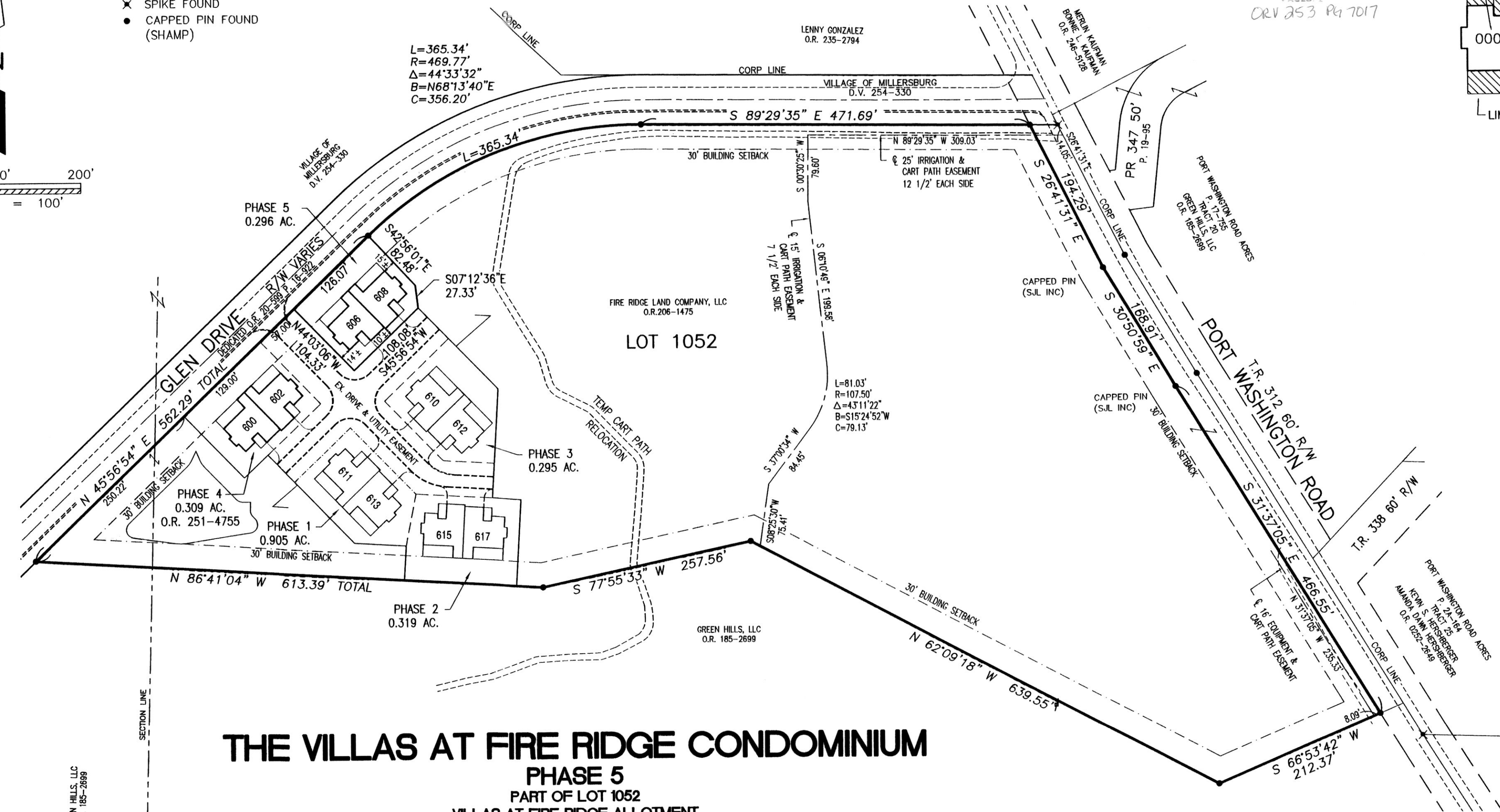


201500096129
 B: 19 P: 2828
 FILED FOR RECORD IN
 HOLMES COUNTY, OH
 ANITA HALL, COUNTY RECORDER
 10/05/2015 3:27 PM
 PLAT MED. 43.20
 PAGES: 1
 CRV 253 Pg 7017



- ✕ SPIKE FOUND
- CAPPED PIN FOUND (SHAMP)



- LOT 1052 15.605 AC.
- PHASE 1 0.905 AC.
 - PHASE 2 0.319 AC.
 - PHASE 3 0.295 AC.
 - PHASE 4 0.309 AC.
 - PHASE 5 0.296 AC.
 - RESIDUE 13.481 AC.

THE VILLAS AT FIRE RIDGE CONDOMINIUM
PHASE 5
 PART OF LOT 1052
 VILLAS AT FIRE RIDGE ALLOTMENT
 PLAT VOL. 19; PG. 1665
VILLAGE OF MILLERSBURG
 HOLMES COUNTY, OHIO

GREEN HILLS, LLC
 O.R. 185-2699

19 20
 19 20

LEGEND

UNIT	PLAN	LIVING	BASEM'T	GARAGE	TOTALS
606	BARRINGTON	1694 SF.	1694 SF.	572 SF.	3960 SF.
608	BARRINGTON	1694 SF.	1694 SF.	528 SF.	3960 SF.

REFERENCE SURVEY
 Survey of a 16.172 AC. parcel by Jim Shamp of Heartland Surveying, Inc.

SURVEYOR'S DECLARATION: I declare that this plan was prepared from an actual survey. That the same shows graphically, insofar as possible, the location of the boundaries, the layout, location and dimensions of units and of the buildings, the location and layout of limited common elements, the location and layout of common elements, and the location of appurtenant easements, if any.



ENGINEER'S DECLARATION: I declare that this plan was prepared from an actual survey. That the same shows graphically, insofar as possible, the location of the boundaries, the layout, location and dimensions of units and of the buildings, the location and layout of limited common elements, the location and layout of common elements, and the location of appurtenant easements, if any.



TRANSFER NOT NECESSARY
 DATE October 5, 2015
 AUDITOR [Signature]

[Signature]
 Mark E. Purdy, P.S. 7307
 6-30-15
 Date

[Signature] 7-1-15
 John A. Long, P.E. 67239 Date

SHAFFER, JOHNSTON, LICHTENWALTER & ASSOCIATES, INC.
 Consulting Engineers & Surveyors
 3477 Commerce Parkway, Suite C
 Wooster, Ohio 44691
 TEL (330) 345-6377 FAX (330) 345-6725 EMAIL sjl@sjl-inc.com

DRAWN C. Falb	CHECKED	1" SCALE = 100'	DATE 06/30/15
DWG NO: EW-2332BE	JOB NO: EW-2332BE	SHEET 2 OF 3	