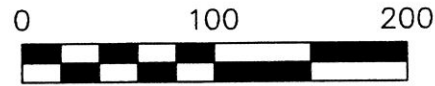
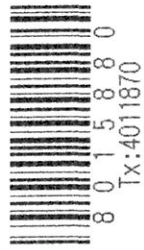


ORV 253 PGS 3473 +
3479

PRAIRIE TOWNSHIP
N.W. QTR. FRACTIONAL SECTION 14
T-13 N; R-13 W
HOLMES COUNTY, OHIO

SURVEYED FOR: MONROE WEAVER

10 11 S 89°52'22" E SECTION LINE
15 14 144.76' T.R. 574
60' R/W



SCALE: 1"=100'

- 5/8" REBAR FOUND UNLESS OTHERWISE NOTED
- 5/8" REBAR SET WITH I.D. CAP I.D. CAP MARKED "BAKER 6938"

REFERENCES

- DEED VOL. 186 PAGE 531
- DEED VOL. 216 PAGE 186
- DEED VOL. 249 PAGE 186
- DEED VOL. 271 PAGE 791
- O.R. VOL. 161 PAGE 461
- O.R. VOL. 218 PAGE 1033
- PLAT VOL. 6 PAGE 19
- PLAT VOL. 9 PAGE 12
- PLAT VOL. 3 PAGE 42B
- PLAT VOL. 16 PAGE 498
- PLAT VOL. 14 PAGE 191
- PLAT VOL. 6 PAGE 171
- PLAT VOL. 19 PAGE 2590

BEARINGS FROM
PLAT VOL. 19 PAGE 2590



I CERTIFY THIS SURVEY TO BE CORRECT TO THE BEST OF MY KNOWLEDGE.

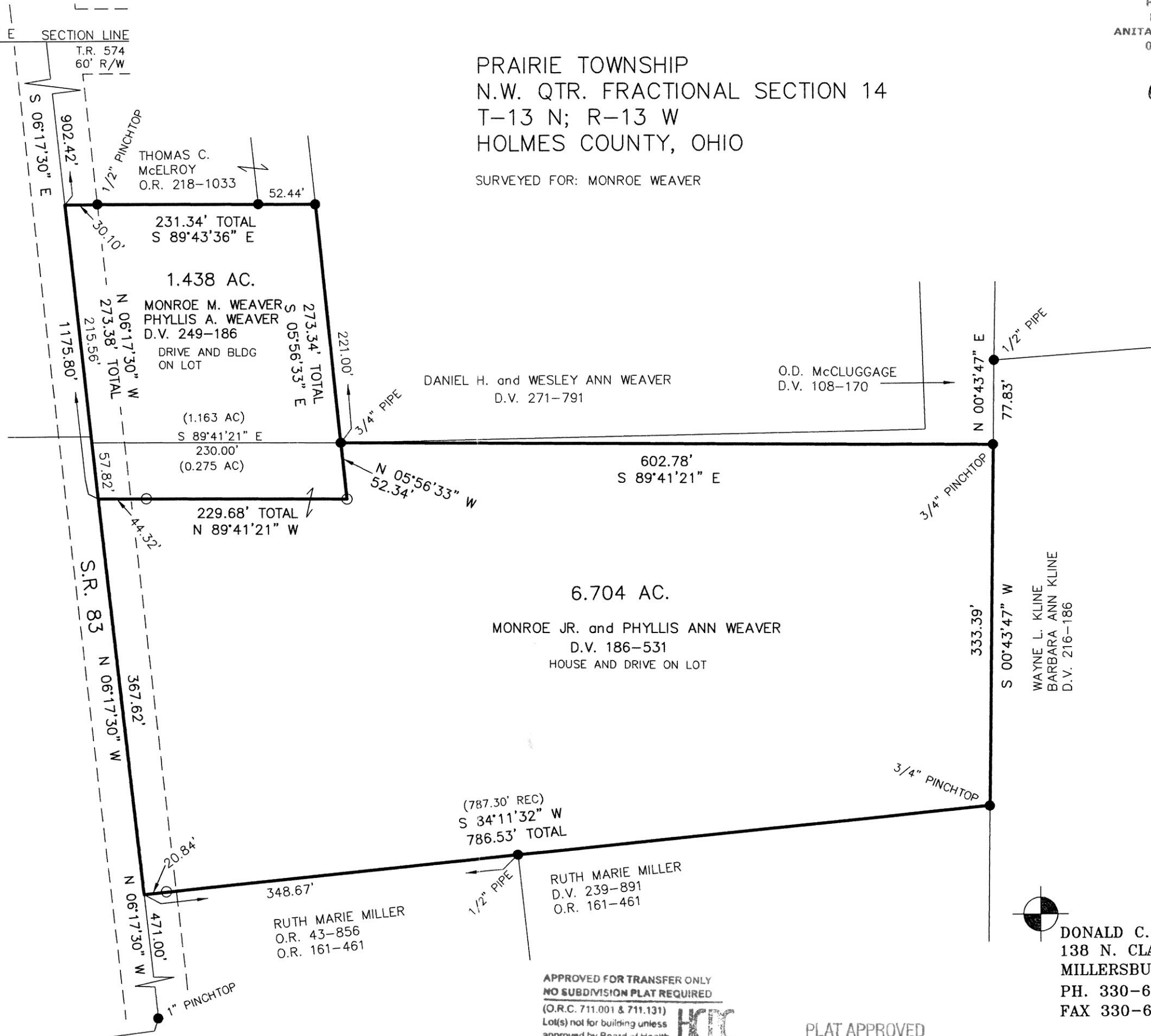
Donald C. Baker

DONALD C. BAKER P.S. 6938

DATE: MAY 1, 2015

FDB\CJG

FILE NAME: WORK4\S-192-15\DB-MD



APPROVED FOR TRANSFER ONLY
NO SUBDIVISION PLAT REQUIRED
(O.R.C. 711.001 & 711.131)
Lot(s) not for building unless
approved by Board of Health.

HOLMES CO. PLANNING COMMISSION
By *[Signature]* Date *6/26/15*

PLAT APPROVED

8/18/2015



DONALD C. BAKER SURVEYING
138 N. CLAY STREET
MILLERSBURG, OHIO 44654
PH. 330-674-4788
FAX 330-674-6027