

0 100 200



SCALE: 1"=100'

- ▲ R.R. SPIKE FOUND
- 5/8" REBAR FOUND  
UNLESS OTHERWISE NOTED
- 5/8" REBAR SET WITH I.D. CAP  
I.D. CAP MARKED "BAKER 6938"

HARDY TOWNSHIP  
 N.W. QTR. SECTION 4  
 T-9 N; R-6 W  
 HOLMES COUNTY, OHIO

SURVEYED FOR: ABE WEAVER

REFERENCES

O.R. VOL. 214 PAGE 72  
 PLAT VOL. 12 PAGE 28  
 PLAT VOL. 12 PAGE 944  
 PLAT VOL. 12 PAGE 294  
 PLAT VOL. 12 PAGE 896  
 PLAT VOL. 19 PAGE 237  
 PLAT VOL. 19 PAGE 2614  
 BEARINGS FROM  
 PLAT VOL. 12 PAGE 896

APPROVED FOR TRANSFER ONLY  
 NO SUBDIVISION PLAT REQUIRED

(O.R.C. 711.001 & 711.131)  
 Lot(s) not for building unless  
 approved by Board of Health.



HOLMES CO. PLANNING COMMISSION

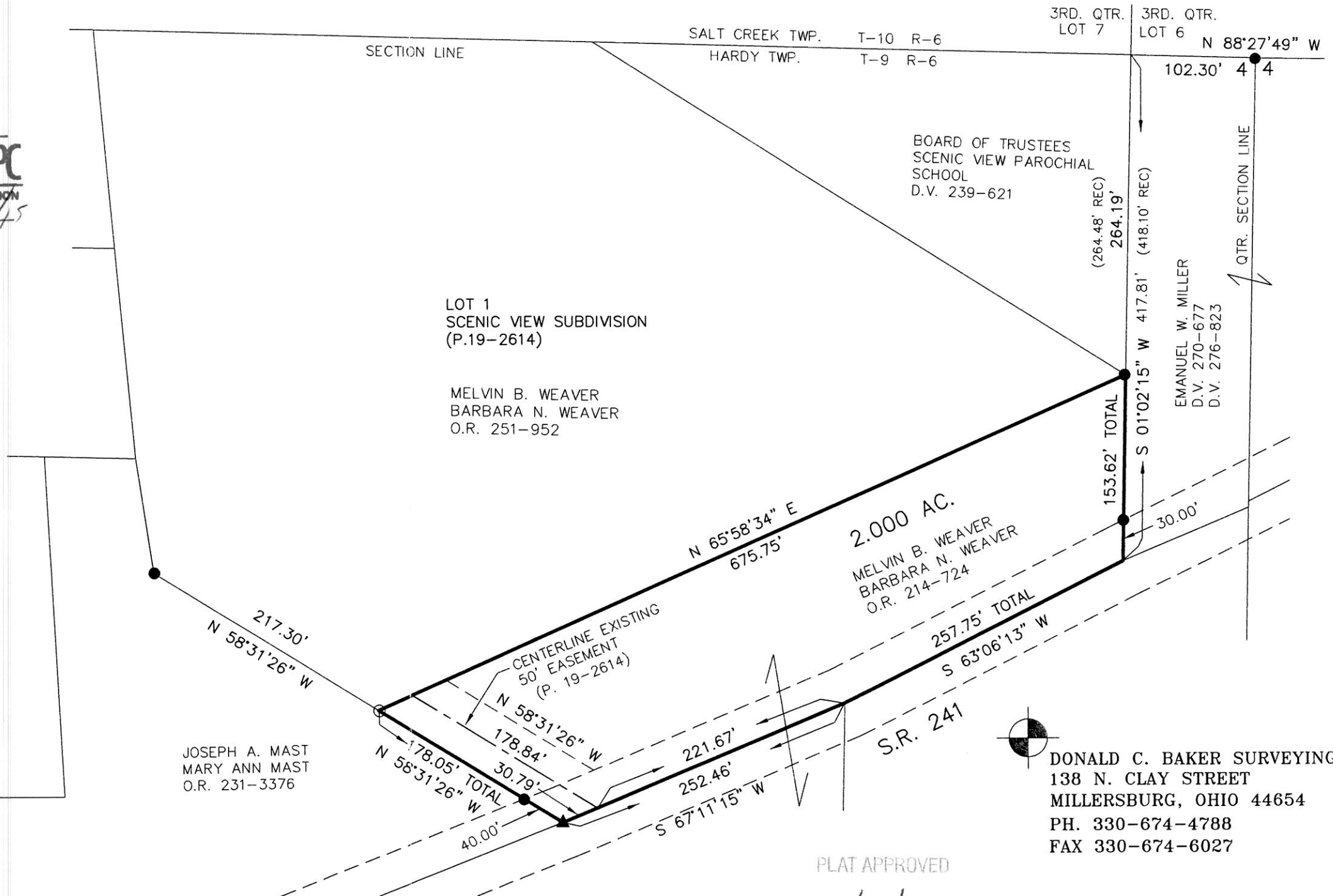
By *[Signature]* Date *7/29/15*



I CERTIFY THIS SURVEY TO BE CORRECT  
 TO THE BEST OF MY KNOWLEDGE.

*[Signature]*

DONALD C. BAKER P.S. 6938  
 DATE: DECEMBER 19, 2014  
 AJG\JNG  
 FILE NAME: WORK4\S-282-14



PLAT APPROVED

*5/22/2015*

DONALD C. BAKER SURVEYING  
 138 N. CLAY STREET  
 MILLERSBURG, OHIO 44654  
 PH. 330-674-4788  
 FAX 330-674-6027