

ORV 252 P3269
 ORV 252 P3271

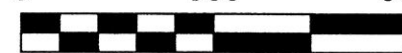
MECHANIC TOWNSHIP
 N.W. QTR. SECTION 19
 T-8 N; R-7 W
 HOLMES COUNTY, OHIO

SURVEYED FOR: RLH LAND COMPANY, LLC

REFERENCES

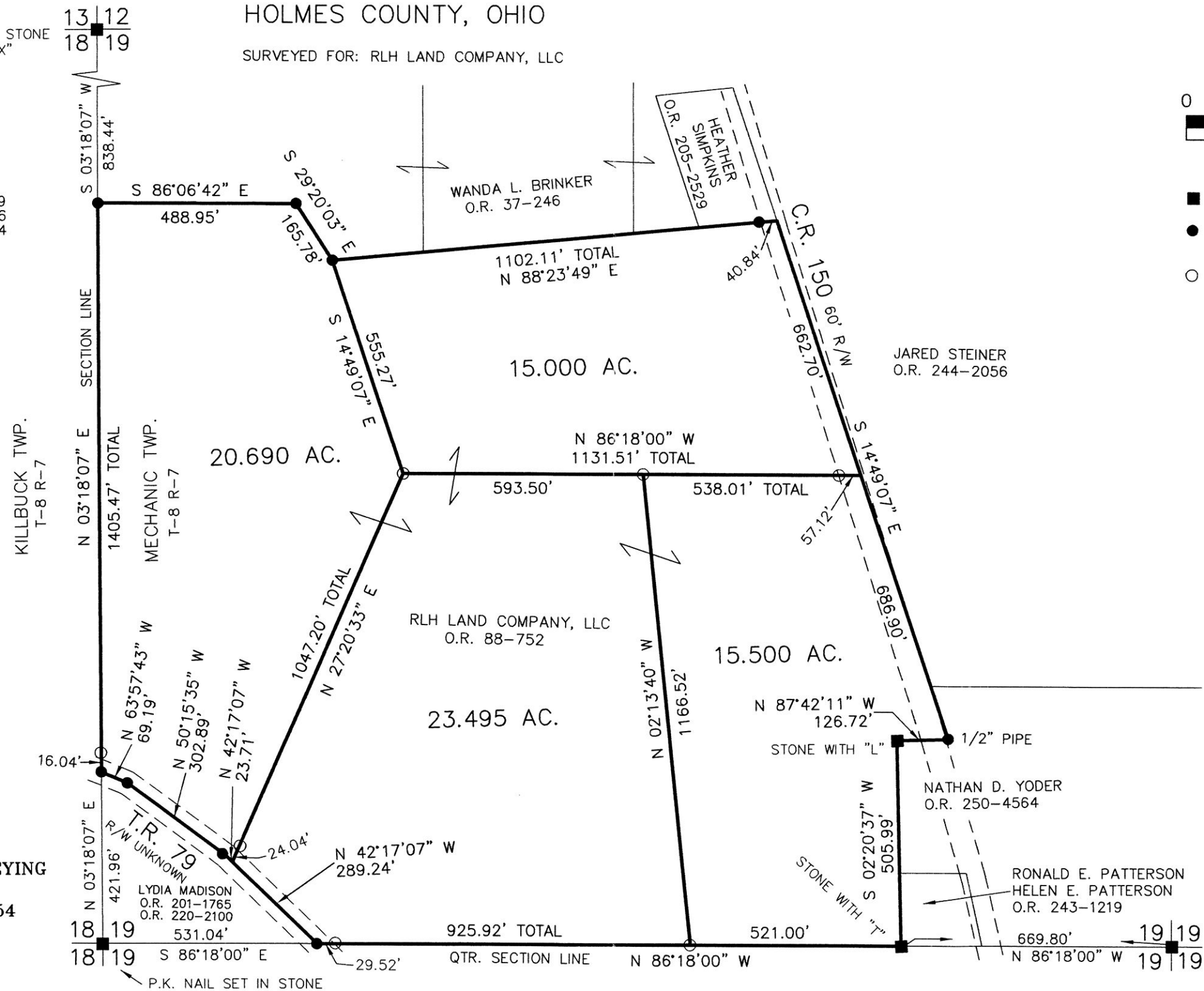
- O.R. VOL. 37 PAGE 246
- O.R. VOL. 88 PAGE 752
- O.R. VOL. 243 PAGE 1219
- O.R. VOL. 244 PAGE 2056
- O.R. VOL. 250 PAGE 4564
- PLAT VOL. 9 PAGE 60
- PLAT VOL. 17 PAGE 696
- PLAT VOL. 18 PAGE 83
- PLAT VOL. 19 PAGE 528
- BEARINGS FROM
 PLAT VOL. 18 PAGE 83

0 300 600



SCALE: 1"=300'

- STONE FOUND
- 5/8" REBAR FOUND
 UNLESS OTHERWISE NOTED
- 5/8" REBAR SET WITH I.D. CAP
 I.D. CAP MARKED "BAKER 6938"



APPROVED FOR TRANSFER ONLY
 NO SUBDIVISION PLAT REQUIRED
 (O.R.C. 711.001 & 711.131)
 Lot(s) not for building unless approved by Board of Health.
 HOLMES CO. PLANNING COMMISSION
 By: *[Signature]* Date: 5-13-15



I CERTIFY THIS SURVEY TO BE CORRECT TO THE BEST OF MY KNOWLEDGE.
[Signature]
 DONALD C. BAKER P.S. 6938
 DATE: APRIL 16, 2015
 KES\CJG
 FILE NAME: WORK4\S-100-15

DONALD C. BAKER SURVEYING
 138 N. CLAY STREET
 MILLERSBURG, OHIO 44654
 PH. 330-674-4788
 FAX 330-674-6027

PLAT APPROVED
 5/7/2015