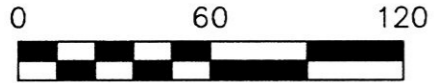


PAIN TOWNSHIP  
 4TH. QTR., LOT 21  
 T-10 N; R-5 W  
 HOLMES COUNTY, OHIO

SURVEYED FOR: MERLE MAST



SCALE: 1"=60'

- MAG NAIL FOUND
- ▲ R.R. SPIKE FOUND
- 5/8" REBAR FOUND  
UNLESS OTHERWISE NOTED
- 5/8" REBAR SET WITH I.D. CAP  
I.D. CAP MARKED "BAKER 6938"

REFERENCES

O.R. VOL. 164 PAGE 848  
 O.R. VOL. 177 PAGE 3383  
 O.R. VOL. 177 PAGE 3388  
 PLAT VOL. 18 PAGE 736  
 PLAT VOL. 19 PAGE 296  
 PLAT VOL. 19 PAGE 297

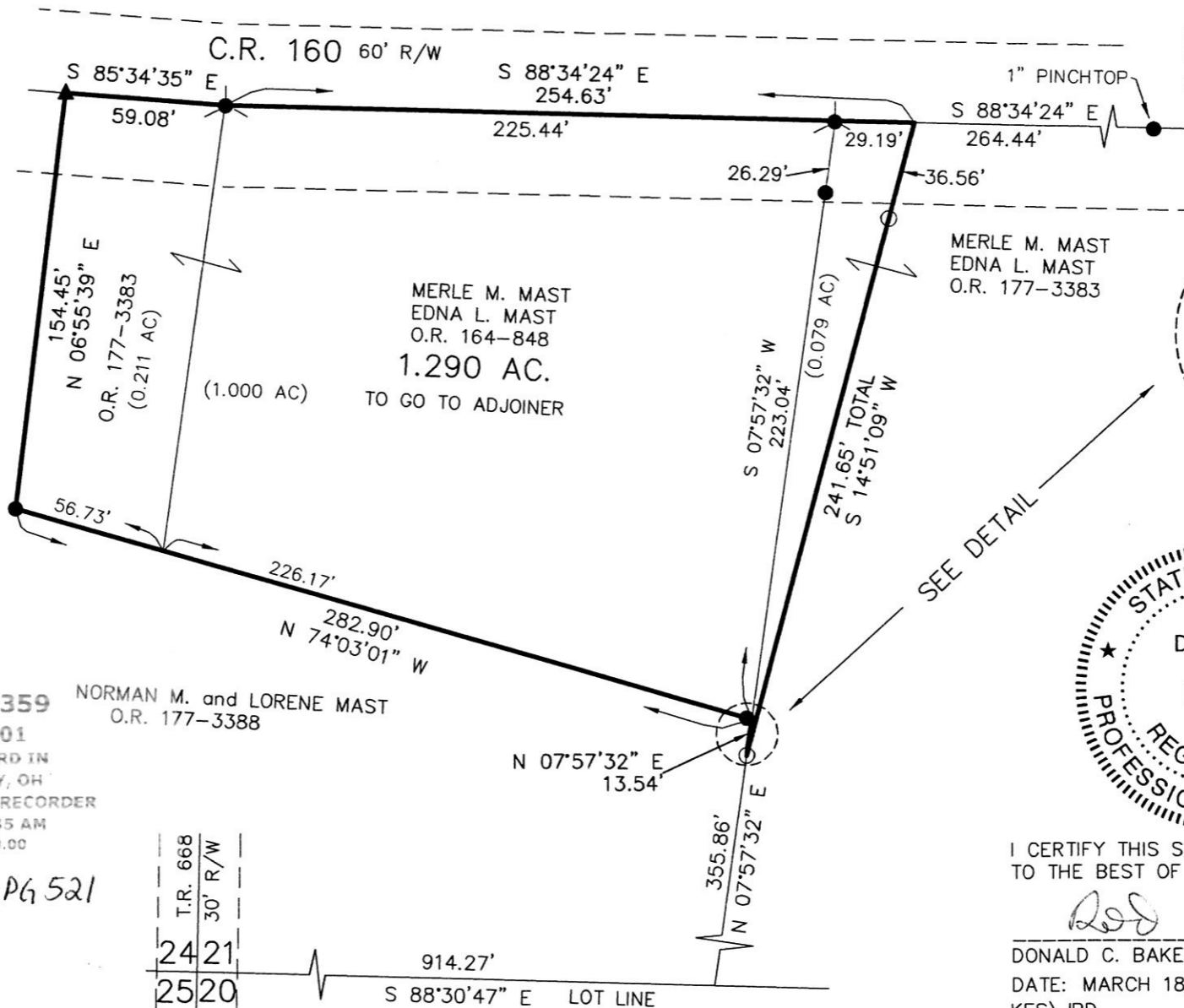
BEARINGS FROM  
 PLAT VOL. 19 PAGE 296

**201500093359**  
**B: 19 P: 2701**  
 FILED FOR RECORD IN  
 HOLMES COUNTY, OH  
 ANITA HALL, COUNTY RECORDER  
 04/15/2015 9:35 AM  
 SMALL PLAT . 40.00  
 PAGES: 1

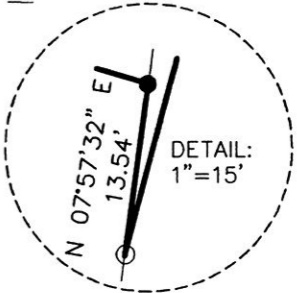
ORV 252 Pg 521



**DONALD C. BAKER SURVEYING**  
 138 N. CLAY STREET  
 MILLERSBURG, OHIO 44654  
 PH. 330-674-4788  
 FAX 330-674-6027



APPROVED FOR TRANSFER ONLY  
 NO SUBDIVISION PLAT REQUIRED  
 (O.R.C. 711.001 & 711.131)  
 Lot(s) not for building unless  
 approved by Board of Health.  
 HOLMES CO. PLANNING COMMISSION  
 By *MB* Date *4/1/15*



I CERTIFY THIS SURVEY TO BE CORRECT TO THE BEST OF MY KNOWLEDGE.

*Donald C. Baker*  
 DONALD C. BAKER P.S. 6938  
 DATE: MARCH 18, 2015  
 KES\JPD  
 FILE NAME: WORK4\S-128-15

PLAT APPROVED  
*3/31/2015*