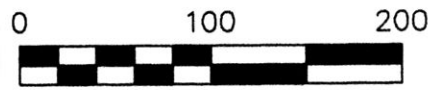


PAINT TOWNSHIP  
S.E. QTR. SECTION 25  
T-15 N; R-11 W  
HOLMES COUNTY, OHIO

SURVEYED FOR: JOHN RABER

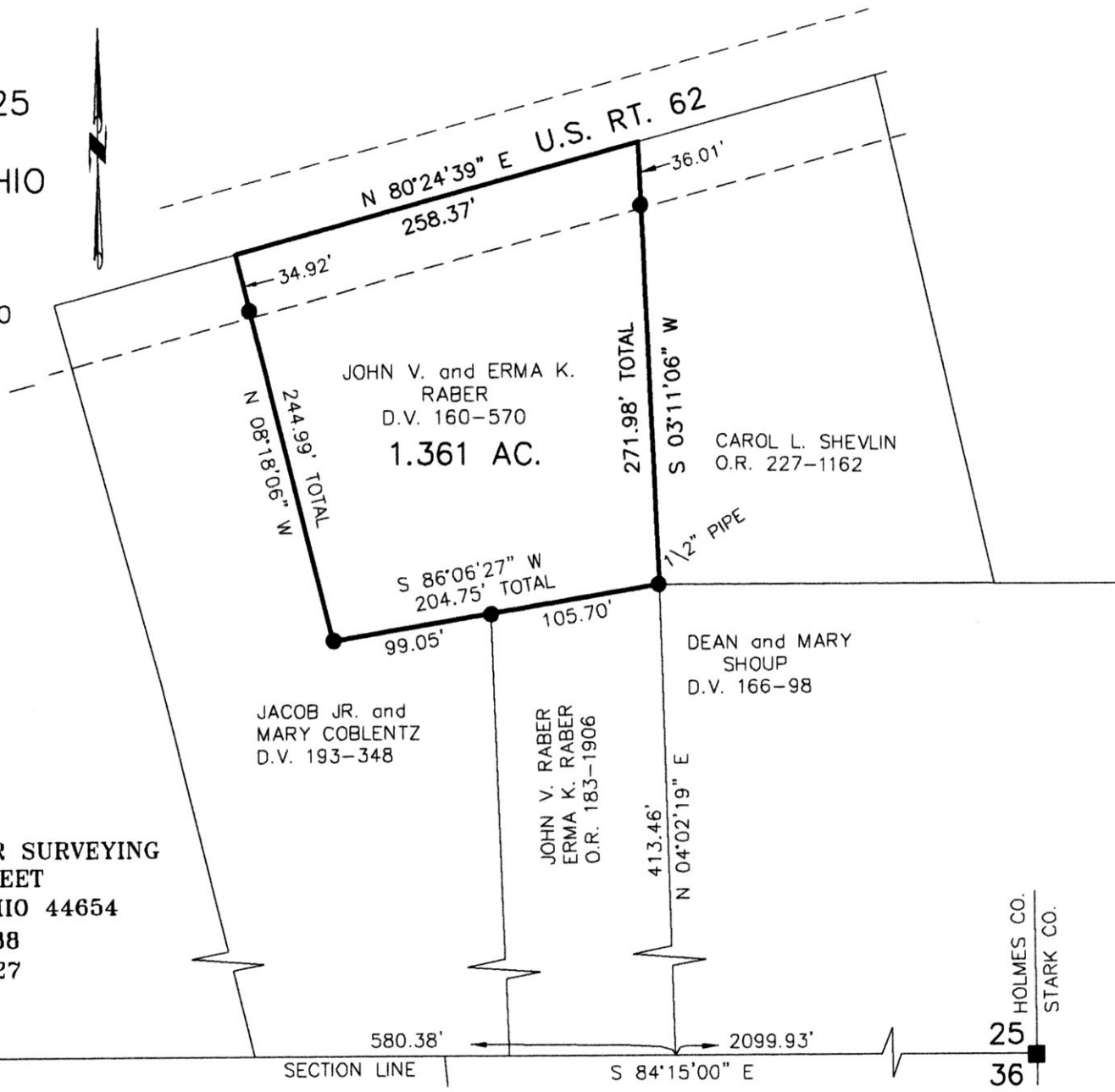


SCALE: 1"=100'

- 5/8" REBAR FOUND UNLESS OTHERWISE NOTED
- STONE FOUND



DONALD C. BAKER SURVEYING  
138 N. CLAY STREET  
MILLERSBURG, OHIO 44654  
PH. 330-674-4788  
FAX 330-674-6027



25 | 25  
36 | 36

SECTION LINE

S 84°15'00" E

HOLMES CO.  
STARK CO.

201400091225  
B: 19 P: 2586  
FILED FOR RECORD IN  
HOLMES COUNTY, OH  
ANITA HALL, COUNTY RECORDER  
11/07/2014 11:26 AM  
SMALL PLAT . 40.00  
PAGES: 1  
ORV 250 Pg 5053

- REFERENCES
- DEED VOL. 160 PAGE 570
  - DEED VOL. 166 PAGE 98
  - DEED VOL. 193 PAGE 348
  - O.R. VOL. 183 PAGE 1906
  - O.R. VOL. 227 PAGE 1162
  - PLAT VOL. 17 PAGE 697
  - PLAT VOL. 18 PAGE 116
  - PLAT VOL. 19 PAGE 508
  - PLAT VOL. 19 PAGE 1868
- BEARINGS FROM  
PLAT VOL. 19 PAGE 508



I CERTIFY THIS SURVEY TO BE CORRECT TO THE BEST OF MY KNOWLEDGE.

*Donald C. Baker*  
DONALD C. BAKER P.S. 6938  
DATE: SEPT. 3, 2014  
FILE NAME: WORK4\S-425-14

APPROVED FOR TRANSFER ONLY  
NO SUBDIVISION PLAT REQUIRED  
(O.R.C. 711.001 & 711.131)  
Lot(s) not for building unless approved by Board of Health.  
HOLMES CO. PLANNING COMMISSION  
By *[Signature]* Date *9-1-14*

PLAT APPROVED  
*9/1/2014*