

0 100 200



SCALE: 1"=100'

■ STONE FOUND

● 5/8" REBAR FOUND
UNLESS OTHERWISE NOTED

○ 5/8" REBAR SET WITH I.D. CAP
I.D. CAP MARKED "BAKER 6938"

REFERENCES

DEED VOL. 257 PAGE 417
O.R. VOL. 204 PAGE 2516
PLAT VOL. 19 PAGE 990
PLAT VOL. 19 PAGE 2439
BEARINGS FROM PLAT VOL. 19 PAGE 990

HARDY TOWNSHIP
1ST. QTR., LOT 27
T-9 N; R-7 W
HOLMES COUNTY, OHIO

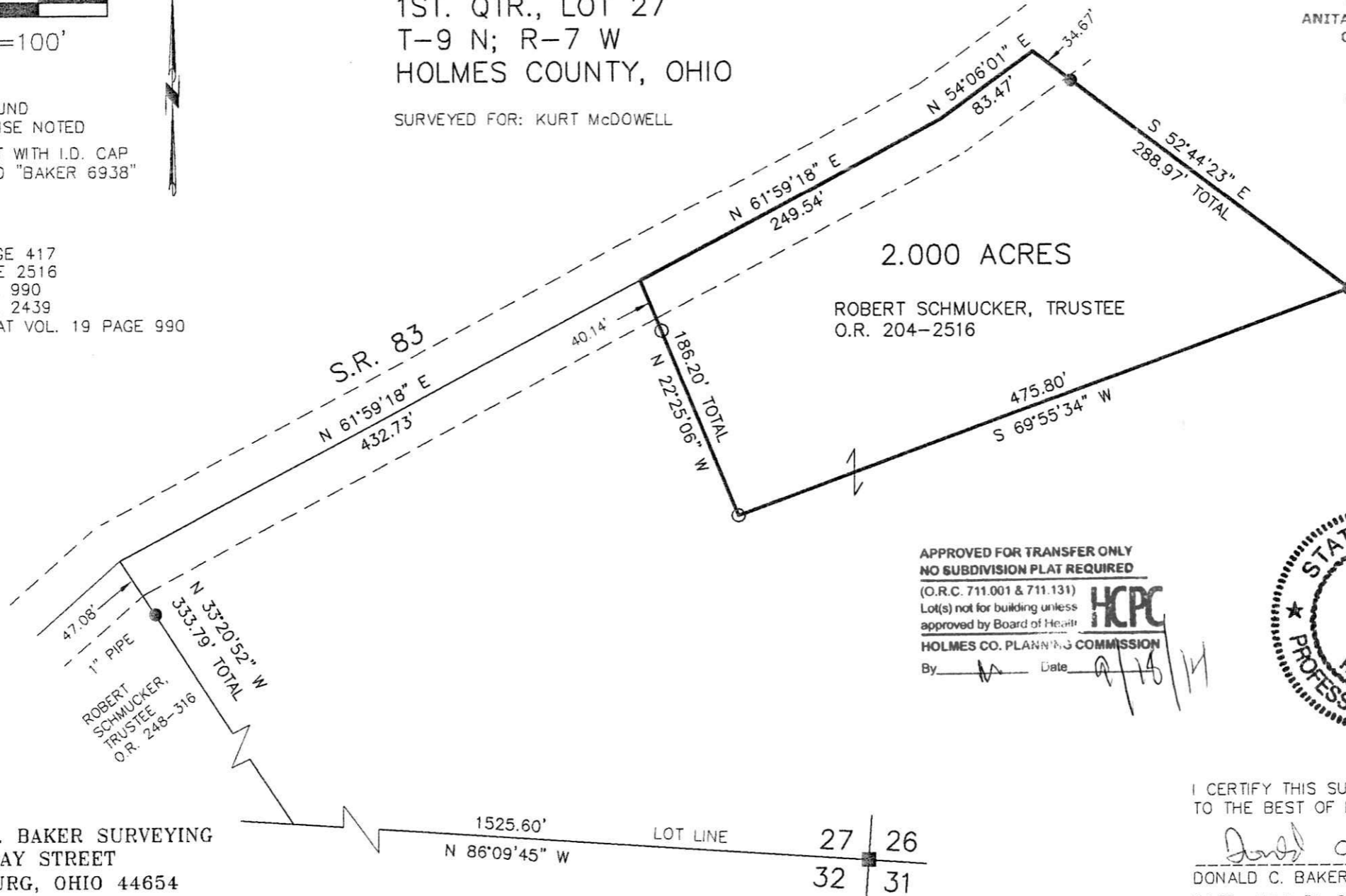
SURVEYED FOR: KURT McDOWELL

201400090491

B: 19 P: 2560

FILED FOR RECORD IN
HOLMES COUNTY, OH
ANITA HALL, COUNTY RECORDER
09/18/2014 12:06 PM
SMALL PLAT - 40.00
PAGES: 1

ORV 250 pg 790



2.000 ACRES

ROBERT SCHMUCKER, TRUSTEE
O.R. 204-2516

APPROVED FOR TRANSFER ONLY
NO SUBDIVISION PLAT REQUIRED

(O.R.C. 711.001 & 711.131)

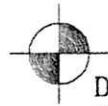
Lot(s) not for building unless
approved by Board of Health

HOLMES CO. PLANNING COMMISSION

By *[Signature]* Date *9/18/14*



DONALD C. BAKER SURVEYING
138 N. CLAY STREET
MILLERSBURG, OHIO 44654
PH. 330-674-4788
FAX 330-674-6027



1525.60'
N 86°09'45" W

LOT LINE

27 | 26
32 | 31

PLAT APPROVED

9/17/2014

I CERTIFY THIS SURVEY TO BE CORRECT
TO THE BEST OF MY KNOWLEDGE.

Donald C Baker

DONALD C. BAKER P.S. 6938

DATE: JULY 31, 2014

FDB\AGG

FILE NAME: WORK4\S-348-14\MLD

