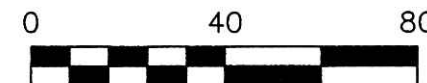


ORV 250 P206

RETRACEMENT SURVEY OF
 O.R. VOL. 224-3106

VILLAGE OF LAKEVILLE
 WASHINGTON TOWNSHIP
 S.W. QTR. SECTION 25
 T-20 N; R-15 W
 HOLMES COUNTY, OHIO

SURVEYED FOR: REAL ESTATE SHOWCASE



SCALE: 1"=40'

- 5/8" REBAR FOUND
UNLESS OTHERWISE NOTED
- 5/8" REBAR SET WITH I.D. CAP
I.D. CAP MARKED "BAKER 6938"

REFERENCES

- DEED VOL. 183 PAGE 532
- DEED VOL. 264 PAGE 770
- O.R. VOL. 224 PAGE 3106
- O.R. VOL. 132 PAGE 543
- O.R. VOL. 171 PAGE 376
- PLAT VOL. 12 PAGE 425
- PLAT VOL. 14 PAGE 470
- PLAT VOL. 14 PAGE 952
- PLAT VOL. 18 PAGE 474
- PLAT VOL. 19 PAGE 703
- PLAT VOL. 19 PAGE 1673
- BEARINGS FROM
PLAT VOL. 19 PAGE 1673



I CERTIFY THIS SURVEY TO BE CORRECT
 TO THE BEST OF MY KNOWLEDGE.

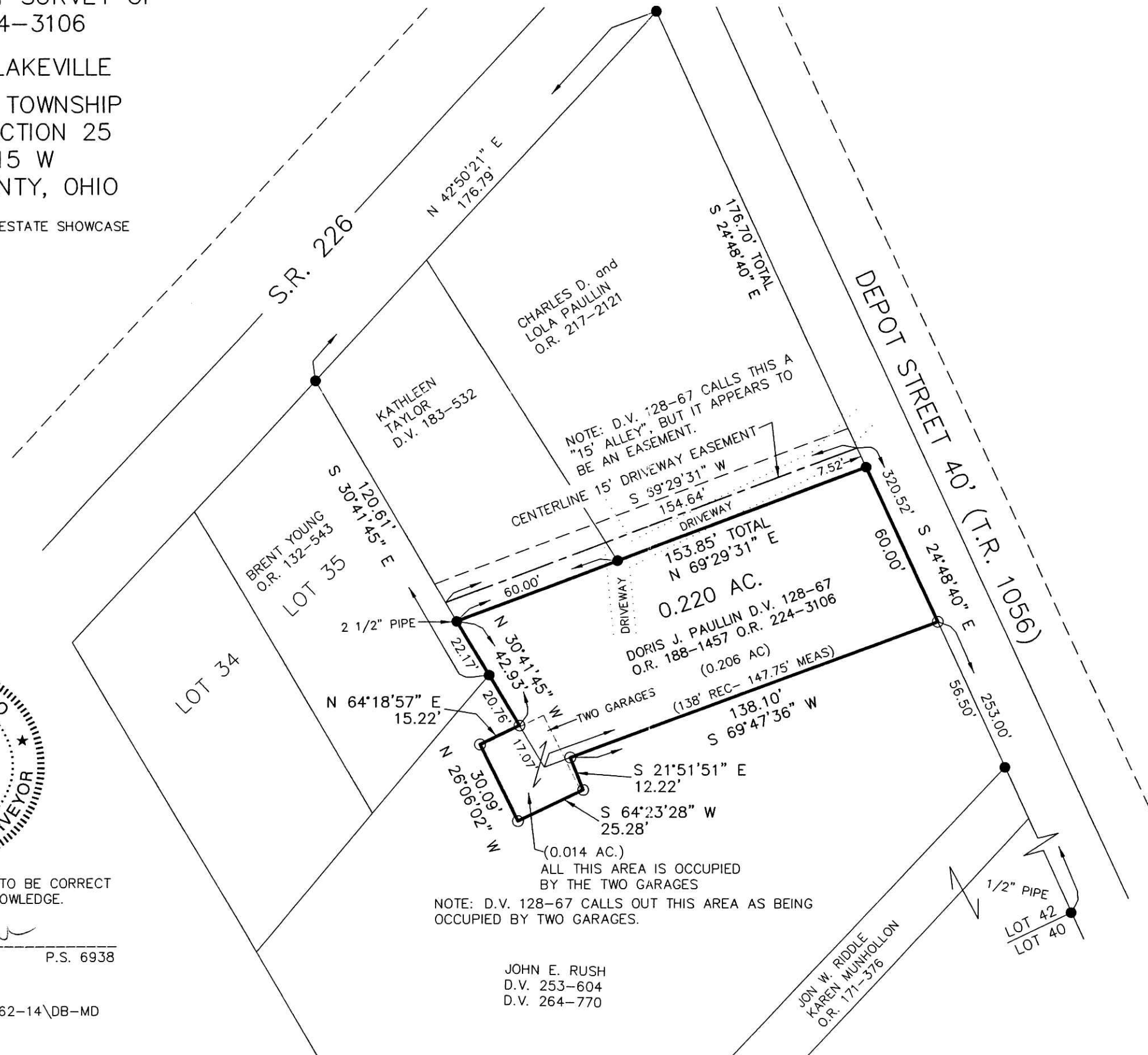
Donald C. Baker

DONALD C. BAKER P.S. 6938

DATE: AUGUST 5, 2014

FDB\AGG

FILE NAME: WORK4\S-362-14\DB-MD



NOTE: D.V. 128-67 CALLS OUT THIS AREA AS BEING
 OCCUPIED BY TWO GARAGES.

JOHN E. RUSH
 D.V. 253-604
 D.V. 264-770

APPROVED FOR TRANSFER ONLY
 NO SUBDIVISION PLAT REQUIRED

(O.R.C. 711.001 & 711.131)
 Lot(s) not for building unless
 approved by Board of Health.

HOLMES CO. PLANNING COMMISSION
 By *[Signature]* Date *8-29-14*



DONALD C. BAKER SURVEYING
 138 N. CLAY STREET
 MILLERSBURG, OHIO 44654
 PH. 330-674-4788
 FAX 330-674-6027

PLAT APPROVED

8/28/2014