

RIPLEY TOWNSHIP  
S.W. QTR. SECTION 5  
T-17 N; R-14 W  
HOLMES COUNTY, OHIO

201400090226

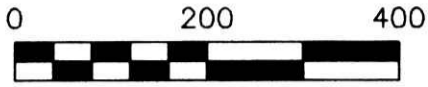
B: 19 P: 2550

FILED FOR RECORD IN  
HOLMES COUNTY, OH  
ANITA HALL, COUNTY RECORDER  
09/02/2014 12:05 PM  
SMALL PLAT - 40.00

PAGES: 1

ORV 249 PL 6827

SURVEYED FOR: WILLIS HORST

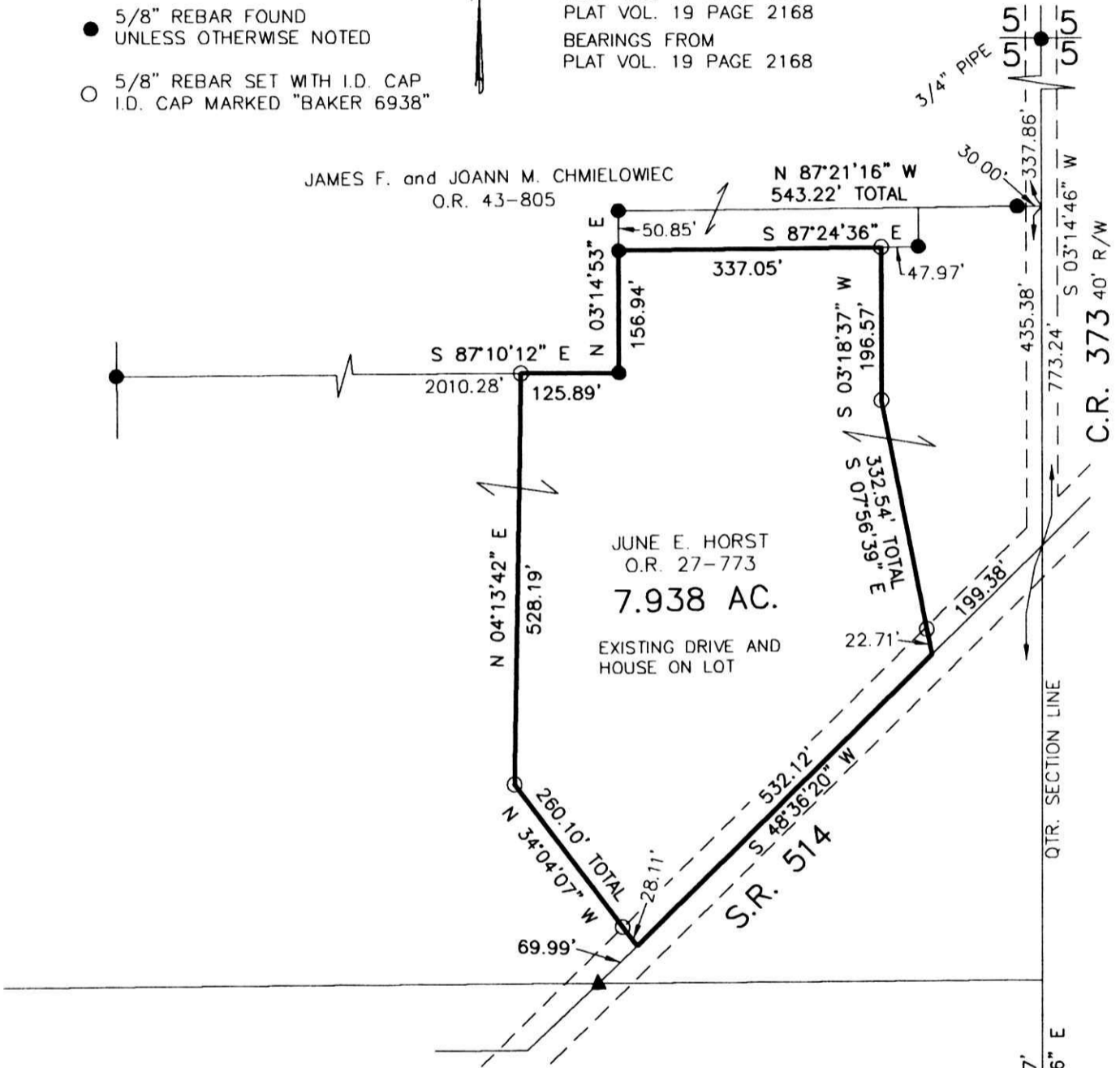


SCALE: 1"=200'

- ▲ R.R. SPIKE FOUND
- 5/8" REBAR FOUND  
UNLESS OTHERWISE NOTED
- 5/8" REBAR SET WITH I.D. CAP  
I.D. CAP MARKED "BAKER 6938"

REFERENCES

O.R. VOL. 27 PAGE 773  
PLAT VOL. 5 PAGE 35  
PLAT VOL. 16 PAGE 664  
PLAT VOL. 11 PAGE 133  
PLAT VOL. 19 PAGE 2168  
BEARINGS FROM  
PLAT VOL. 19 PAGE 2168



APPROVED FOR TRANSFER ONLY  
NO SUBDIVISION PLAT REQUIRED  
(O.R.C. 711.001 & 711.131)  
Lot(s) not for building unless  
approved by Board of Health. **HCPC**  
HOLMES CO. PLANNING COMMISSION  
By: *[Signature]* Date: 8-26-14

I CERTIFY THIS SURVEY TO BE CORRECT  
TO THE BEST OF MY KNOWLEDGE.  
*[Signature]*  
DONALD C. BAKER P.S. 6938  
DATE: AUG. 11, 2014  
FDB\KES  
FILE NAME: WORK4\S-341-14

**DONALD C. BAKER SURVEYING**  
138 N. CLAY STREET  
MILLERSBURG, OHIO 44654  
PH. 330-674-4788  
FAX 330-674-6027

PLAT APPROVED  
8/25/2014 *[Signature]*

