

SCALE: 1"=100'

- STONE FOUND
- 5/8" REBAR FOUND  
UNLESS OTHERWISE NOTED
- 5/8" REBAR SET WITH I.D. CAP  
I.D. CAP MARKED "BAKER 6938"

REFERENCES

DEED VOL. 263 PAGE 392  
 O.R. VOL. 40 PAGE 915  
 O.R. VOL. 237 PAGE 1153  
 PLAT VOL. 4 PAGE 17  
 PLAT VOL. 18 PAGE 373  
 PLAT VOL. 2 PAGE 422  
 BEARINGS FROM  
 PLAT VOL. 2 PAGE 422



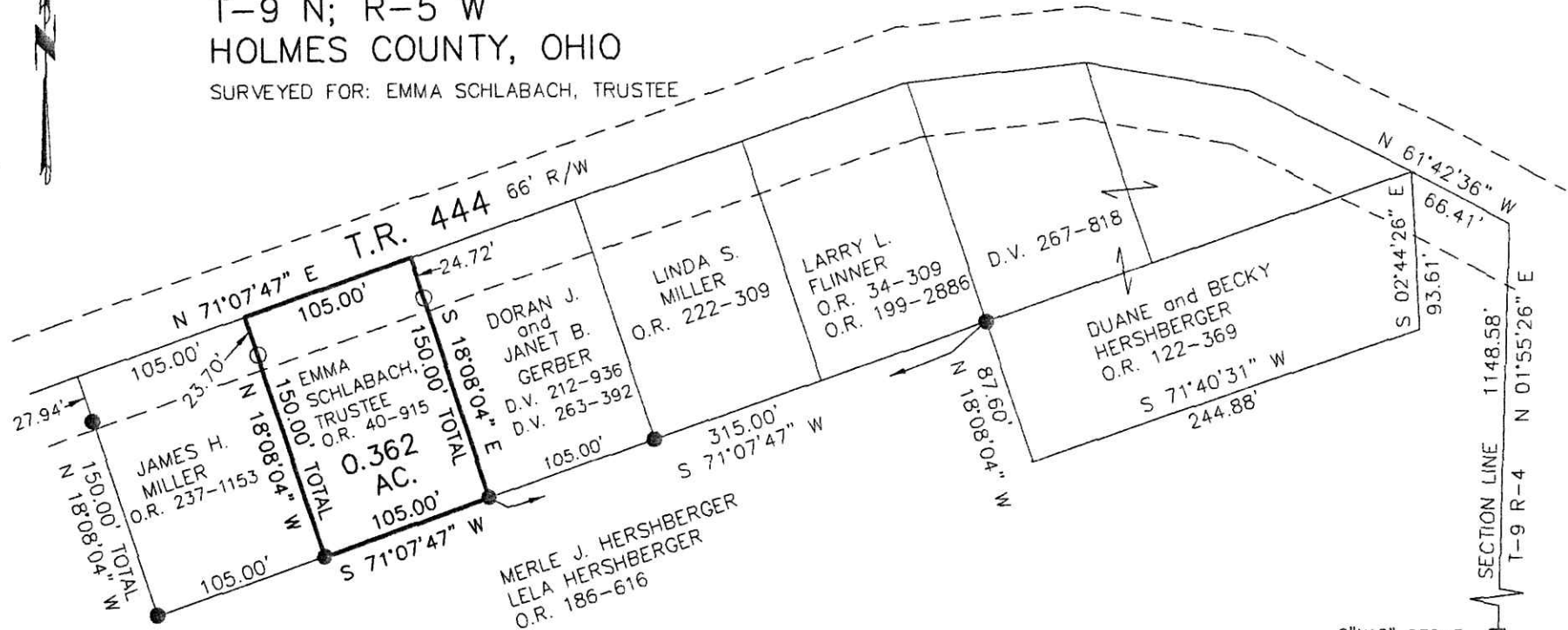
I CERTIFY THIS SURVEY TO BE CORRECT TO THE BEST OF MY KNOWLEDGE.

*Donald C. Baker*

DONALD C. BAKER P.S. 6938  
 DATE: JULY 28, 2014  
 KES\AGG  
 FILE NAME: WORK4\S-357-14

WALNUT CREEK TOWNSHIP  
 N.E. QTR. SECTION 20  
 T-9 N; R-5 W  
 HOLMES COUNTY, OHIO

SURVEYED FOR: EMMA SCHLABACH, TRUSTEE

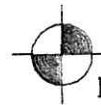


201400090171

8:19 P:2545

FILED FOR RECORD IN  
 HOLMES COUNTY, OH  
 ANITA HALL, COUNTY RECORDER  
 08/28/2014 09:50 AM  
 SMALL PLAT . 40.00  
 PAGES: 1

ORV 249 P 6565, 6569



DONALD C. BAKER SURVEYING  
 138 N. CLAY STREET  
 MILLERSBURG, OHIO 44654  
 PH. 330-674-4788  
 FAX 330-674-6027

APPROVED FOR TRANSFER ONLY  
 NO SUBDIVISION PLAT REQUIRED

(O.R.C. 711.001 & 711.131)  
 Lot(s) not for building unless  
 approved by Board of Health.



HOLMES CO. PLANNING COMMISSION

By *Jed* Date *8-12-14*

8"x10" STONE WITH "L"

5"x12" STONE

20 16  
 20 16

PLAT APPROVED

*8/7/2014g*

