

SCALE: 1"=200'

- 5/8" REBAR FOUND UNLESS OTHERWISE NOTED
- 5/8" REBAR SET WITH I.D. CAP I.D. CAP MARKED "BAKER 6938"

REFERENCES

DEED VOL. 262 PAGE 86
 O.R. VOL. 167 PAGE 412
 PLAT VOL. 2 PAGE 373
 PLAT VOL. 18 PAGE 675
 BEARINGS FROM
 PLAT VOL. 2 PAGE 373



I CERTIFY THIS SURVEY TO BE CORRECT TO THE BEST OF MY KNOWLEDGE.

Donald C. Baker
 DONALD C. BAKER P.S. 6938
 DATE: APRIL 15, 2014
 FDB/KES
 FILE NAME: WORK4\S-154-14

PAINT TOWNSHIP
 4TH. QTR. LOTS 23 & 35
 T-10 N; R-5 W
 HOLMES COUNTY, OHIO

SURVEYED FOR: ERVIN HERSHBERGER

201400089583

B: 19 P: 2525

FILED FOR RECORD IN
 HOLMES COUNTY, OH
 ANITA HALL, COUNTY RECORDER
 07/21/2014 12:19 PM
 SMALL PLAT: 40.00

PAGES: 1
 ORV 249 PG 3385

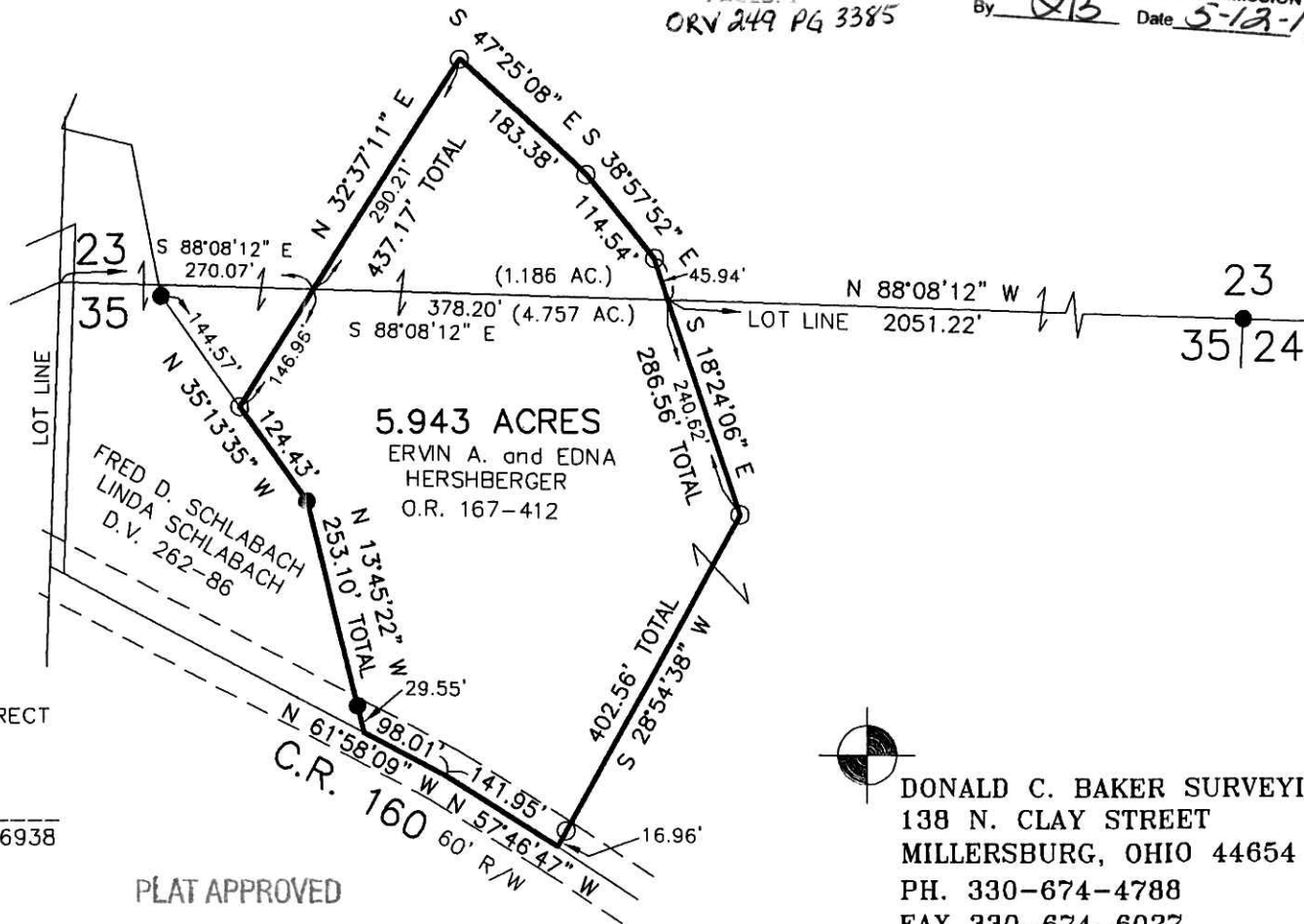
APPROVED FOR TRANSFER ONLY
 NO SUBDIVISION PLAT REQUIRED

(O.R.C. 711.001 & 711.131)
 Lot(s) not for building unless
 approved by Board of Health.



HOLMES CO. PLANNING COMMISSION

By *DB* Date *5-12-14*



PLAT APPROVED

5/8/2014



DONALD C. BAKER SURVEYING
 138 N. CLAY STREET
 MILLERSBURG, OHIO 44654
 PH. 330-674-4788
 FAX 330-674-6027

