



SCALE: 1"=100'

- 5/8" REBAR FOUND UNLESS OTHERWISE NOTED
- 5/8" REBAR SET WITH I.D. CAP I.D. CAP MARKED "BAKER 6938"

REFERENCES

DEED VOL. 214 PAGE 858
 DEED VOL. 216 PAGE 186
 O.R. VOL. 185 PAGE 1611
 PLAT VOL. 8 PAGE 397
 PLAT VOL. 10 PAGE 677
 PLAT VOL. 12 PAGE 755
 PLAT VOL. 8 PAGE 397
 PLAT VOL. 8 PAGE 397
 PLAT VOL. 8 PAGE 397

BEARINGS FROM
 PLAT VOL. 12 PAGE 755

PRAIRIE TOWNSHIP
 N.W. QTR. SECTION 14
 T-13 N; R-13 W
 HOLMES COUNTY, OHIO

SURVEYED FOR: WAYNE KLINE

201400088877
 B: 19 P: 2495
 FILED FOR RECORD IN
 HOLMES COUNTY, OH
 ANITA HALL, COUNTY RECORDER
 05/29/2014 1:54 PM
 SMALL PLAT . 40.00
 PAGES: 1

ORV 248 pg 7209

APPROVED FOR TRANSFER ONLY
 NO SUBDIVISION PLAT REQUIRED

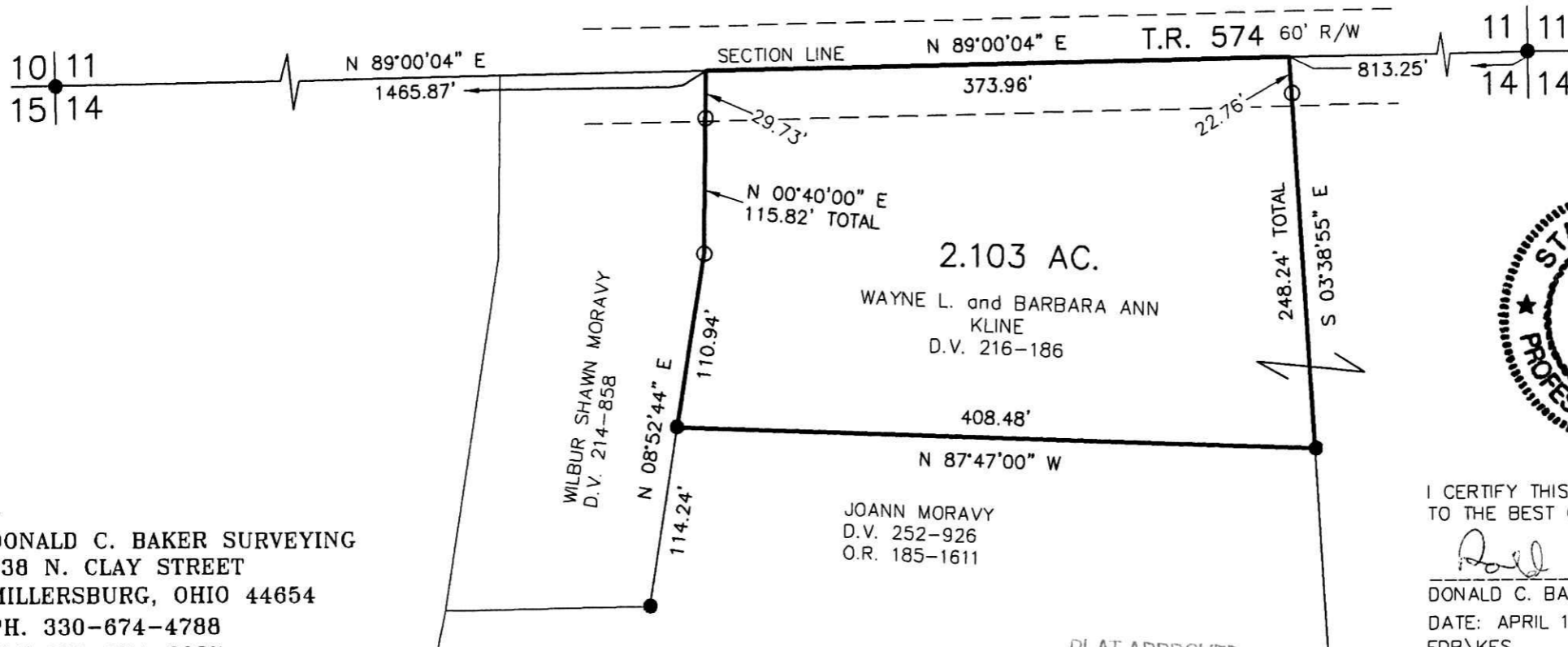
(O.R.C. 711.001 & 711.131)

Lot(s) not for building unless

approved by Board of Health.

HOLMES CO. PLANNING COMMISSION

By Date



I CERTIFY THIS SURVEY TO BE CORRECT TO THE BEST OF MY KNOWLEDGE.

Donald C. Baker
 DONALD C. BAKER P.S. 6938

DATE: APRIL 10, 2014
 FDB\KES
 FILE NAME: WORK4\S-151-14



PLAT APPROVED
 4/18/2014

DONALD C. BAKER SURVEYING
 138 N. CLAY STREET
 MILLERSBURG, OHIO 44654
 PH. 330-674-4788
 FAX 330-674-6027