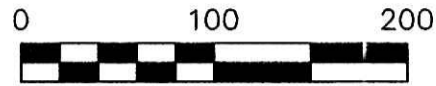
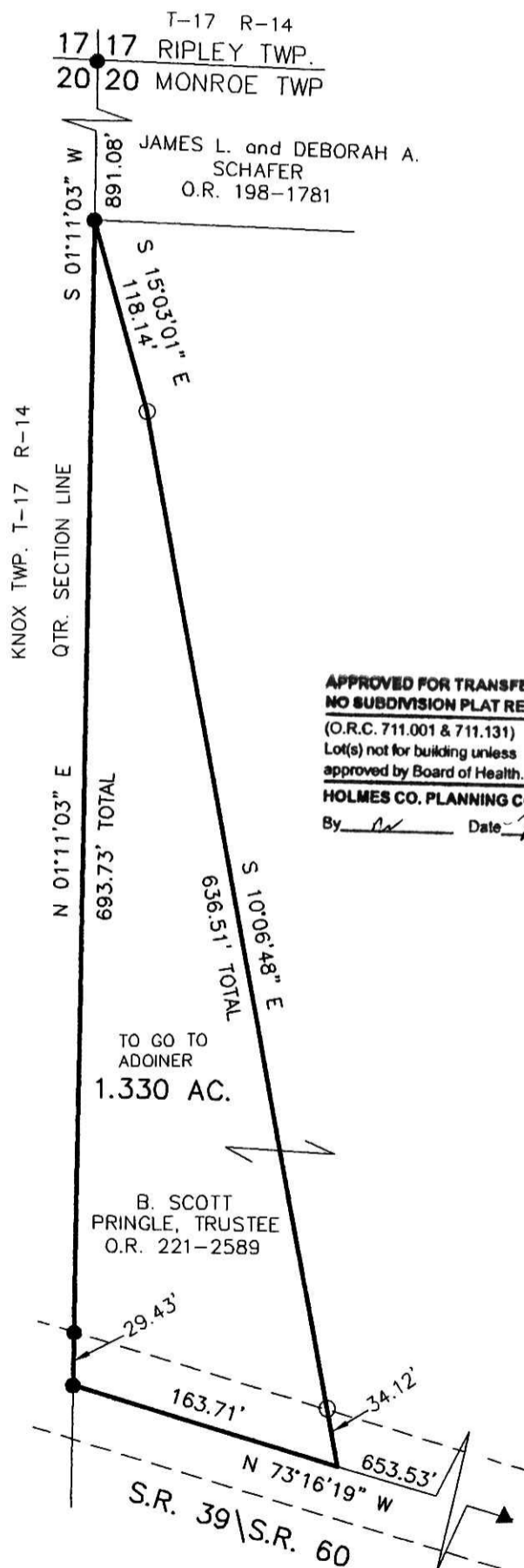


MONROE TOWNSHIP  
EAST HALF OF  
FRACTIONAL SECTION 20  
T-17 N; R-14 W  
HOLMES COUNTY, OHIO

ORV 248 pg 63

SURVEYED FOR: MORRIS CHRISTNER



SCALE: 1"=100'

- ▲ R.R. SPIKE FOUND
- 5/8" REBAR FOUND UNLESS OTHERWISE NOTED
- 5/8" REBAR SET WITH I.D. CAP I.D. CAP MARKED "BAKER 6938"

REFERENCES

- O.R. VOL. 221 PAGE 2589
- PLAT VOL. 8 PAGE 895
- PLAT VOL. 7 PAGE 805
- PLAT VOL. 19 PAGE 876
- PLAT VOL. 19 PAGE 1086
- BEARINGS FROM  
PLAT VOL. 19 PAGE 1086

APPROVED FOR TRANSFER ONLY  
NO SUBDIVISION PLAT REQUIRED  
(O.R.C. 711.001 & 711.131)  
Lot(s) not for building unless  
approved by Board of Health. **HCPC**  
HOLMES CO. PLANNING COMMISSION  
By AK Date 2/27/14



I CERTIFY THIS SURVEY TO BE CORRECT TO THE BEST OF MY KNOWLEDGE.

*Donald C Baker*

DONALD C. BAKER P.S. 6938  
DATE: JAN. 17, 2014  
FDB\KES  
FILE NAME: WORK4\S-7-14



DONALD C. BAKER SURVEYING  
138 N. CLAY STREET  
MILLERSBURG, OHIO 44654  
PH. 330-674-4788  
FAX 330-674-6027



PLAT APPROVED

2/19/2014