



0 200 400



SCALE: 1" = 200'

- 5/8" REBAR FOUND UNLESS OTHERWISE NOTED
- 5/8" REBAR SET WITH I.D. CAP I.D. CAP MARKED "BAKER 6938"

REFERENCES

O.R. VOL. 38 PAGE 400  
 O.R. VOL. 232 PAGE 320  
 PLAT VOL. 9 PAGE 22  
 PLAT VOL. 10 PAGE 912  
 PLAT VOL. 14 PAGE 379  
 PLAT VOL. 19 PAGE 1161

BEARINGS FROM  
 PLAT VOL. 10 PAGE 912



I CERTIFY THIS SURVEY TO BE CORRECT  
 TO THE BEST OF MY KNOWLEDGE.

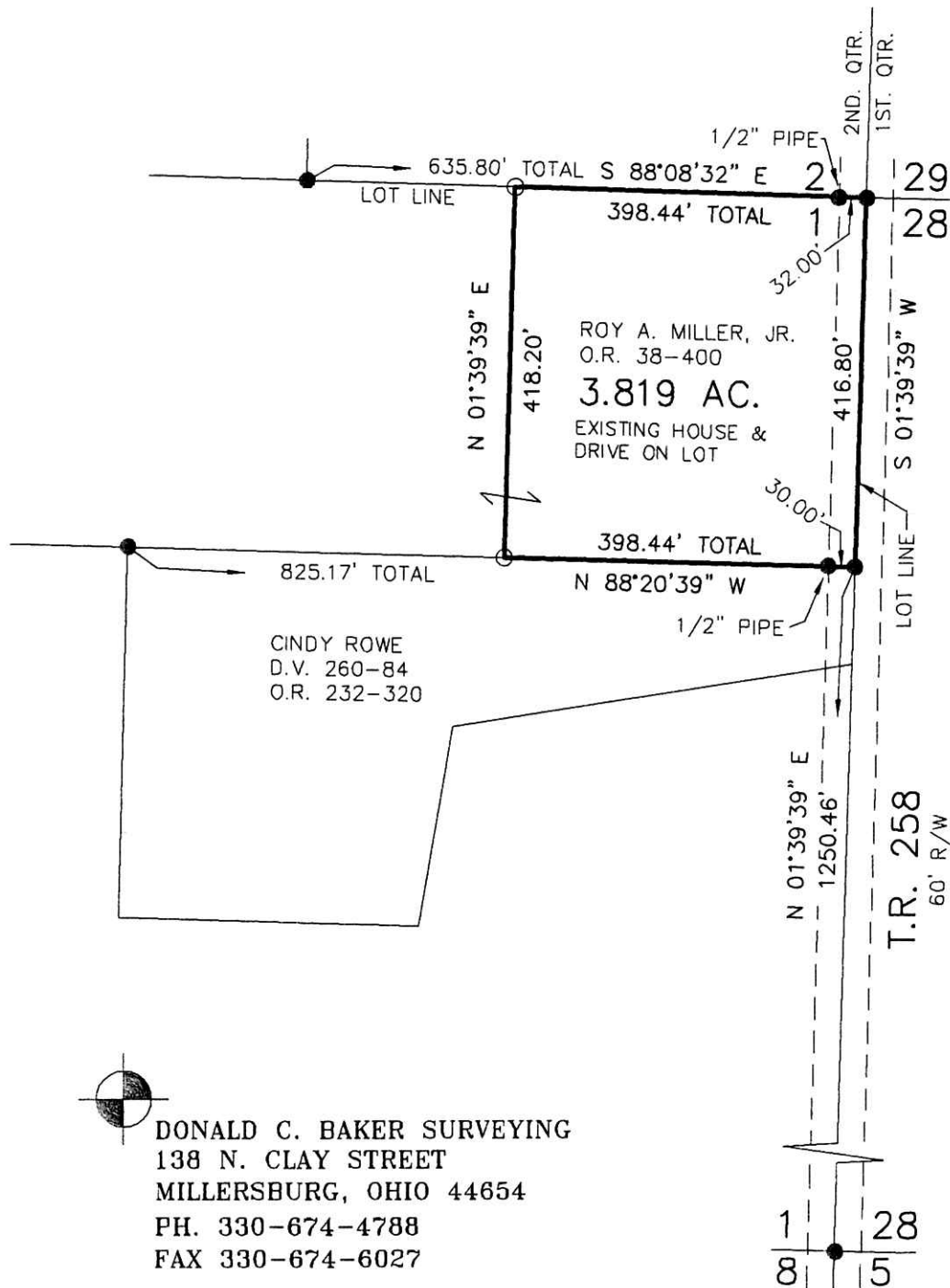
*Donald C. Baker*

DONALD C. BAKER P.S. 6938

DATE: AUG. 20, 2013

FDB\KES

FILE NAME: WORK4\S-397-13



201400087399  
 B: 19 P: 2430  
 FILED FOR RECORD IN  
 HOLMES COUNTY, OH  
 ANITA HALL, COUNTY RECORDER  
 02/13/2014 12:30 PM  
 SMALL PLAT . 40.00  
 PAGES: 1  
 ORV 247 Pg 6809

MONROE TOWNSHIP  
 2ND. QTR., LOT 1  
 T-9 N; R-8 W  
 HOLMES COUNTY, OHIO

SURVEYED FOR: ROY A. MILLER, JR.

APPROVED FOR TRANSFER ONLY  
 NO SUBDIVISION PLAT REQUIRED

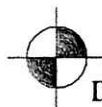
(O.R.C. 711.001 & 711.131)

Lot(s) not for building unless  
 approved by Board of Health.



HOLMES CO. PLANNING COMMISSION

By: *[Signature]* Date: 12/17/13



DONALD C. BAKER SURVEYING  
 138 N. CLAY STREET  
 MILLERSBURG, OHIO 44654  
 PH. 330-674-4788  
 FAX 330-674-6027

PLAT APPROVED

12/11/2013