



0 100 200



SCALE: 1"=100'

- ▲ R.R. SPIKE FOUND
- 5/8" REBAR FOUND UNLESS OTHERWISE NOTED
- 5/8" REBAR SET WITH I.D. CAP I.D. CAP MARKED "BAKER 6938"



REFERENCES  
 O.R. VOL. 184 PAGE 2695  
 O.R. VOL. 208 PAGE 3207  
 O.R. VOL. 211 PAGE 2615  
 PLAT VOL. 5 PAGE 160  
 PLAT VOL. 16 PAGE 466  
 PLAT VOL. 19 PAGE 201  
 PLAT VOL. 19 PAGE 1614  
 BEARINGS FROM  
 PLAT VOL. 19 PAGE 1614

PAINT TOWNSHIP  
 3RD. QTR., LOT 6  
 T-10 N; R-5 W  
 HOLMES COUNTY, OHIO

SURVEYED FOR: STEVE YODER

Additional approval for this and any adjacent properties must be requested and granted prior to any future transfers by deed. Recording of this document does not waive the requirements of local Health District Subdivision Regulations or other governing Authorities which may be in effect at the time of any future deed transfer.

APPROVED FOR TRANSFER ONLY  
 NO SUBDIVISION PLAT REQUIRED

(O.R.C. 711.001 & 711.131)  
 Lot(s) not for building unless approved by Board of Health.

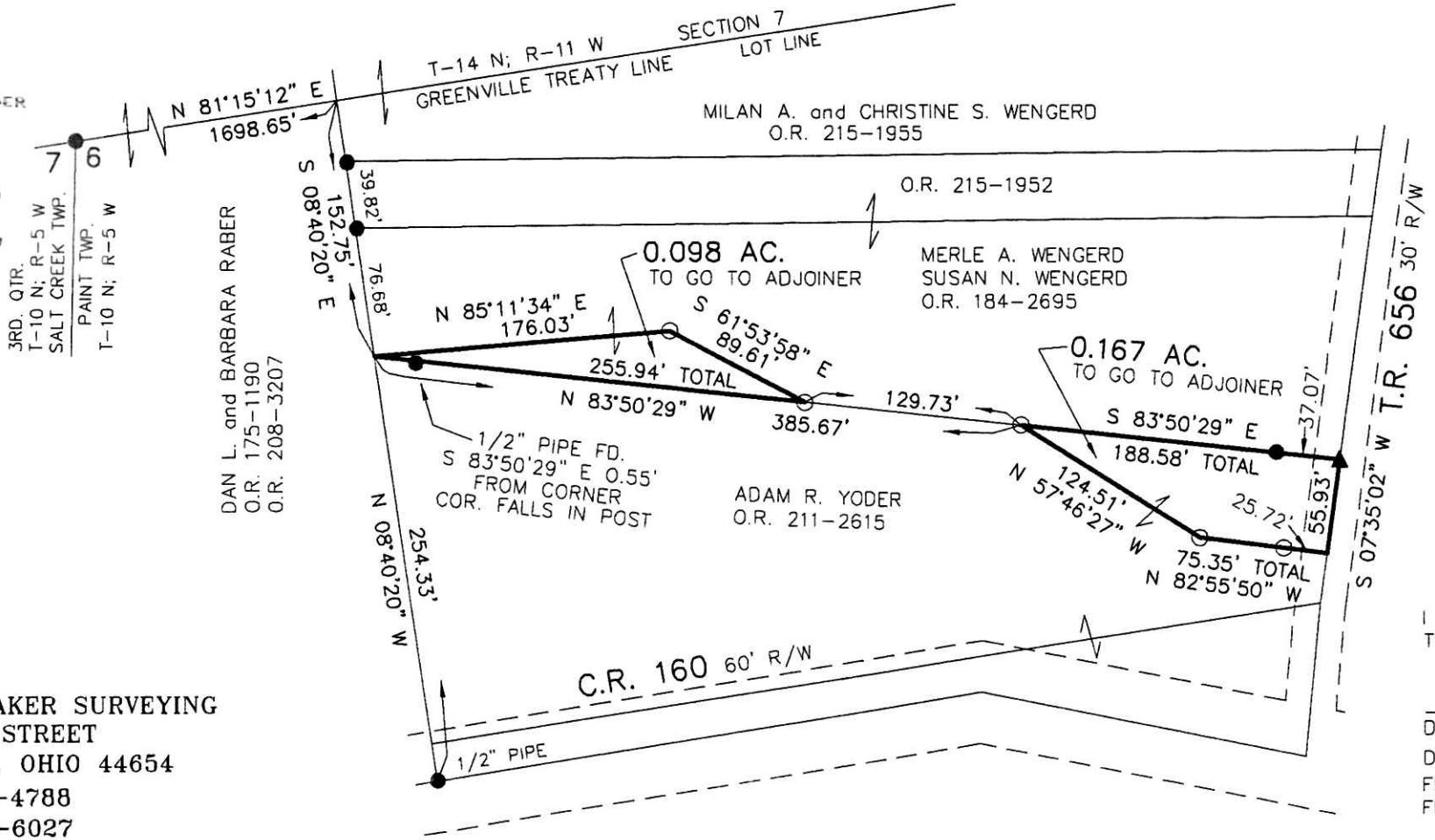


HOLMES CO. PLANNING COMMISSION

By DB Date 12-9-13

201300086551  
 8:19 P: 2390  
 FILED FOR RECORD IN  
 HOLMES COUNTY, OH  
 ANITA HALL, COUNTY RECORDER  
 12/16/2013 10:39 AM  
 SMALL PLAT - 40 00  
 PAGES: 1

ORV 247 PGS 2533  
 2534



PLAT APPROVED

12/3/2013



I CERTIFY THIS SURVEY TO BE CORRECT  
 TO THE BEST OF MY KNOWLEDGE.

*Donald C. Baker*

DONALD C. BAKER P.S. 6938

DATE: OCT. 23, 2013

FDB\KES

FILE NAME: WORK4\S-510-13



DONALD C. BAKER SURVEYING  
 138 N. CLAY STREET  
 MILLERSBURG, OHIO 44654  
 PH. 330-674-4788  
 FAX 330-674-6027