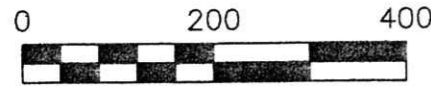


ORV 247 pg 2313



SCALE: 1"=200'

● 5/8" REBAR FOUND
 UNLESS OTHERWISE NOTED

PAINT TOWNSHIP
 2ND. QTR., LOT 2
 T-10 N; R-4 W
 HOLMES COUNTY, OHIO

SURVEYED FOR: ELI WENGERD

REFERENCES

- O.R. VOL. 40 PAGE 534
- O.R. VOL. 40 PAGE 534
- O.R. VOL. 40 PAGE 534
- O.R. VOL. 40 PAGE 534
- PLAT VOL. 5 PAGE 50
- PLAT VOL. 5 PAGE 173
- PLAT VOL. 12 PAGE 670
- PLAT VOL. 16 PAGE 164
- BEARINGS FROM
 PLAT VOL. 16 PAGE 164



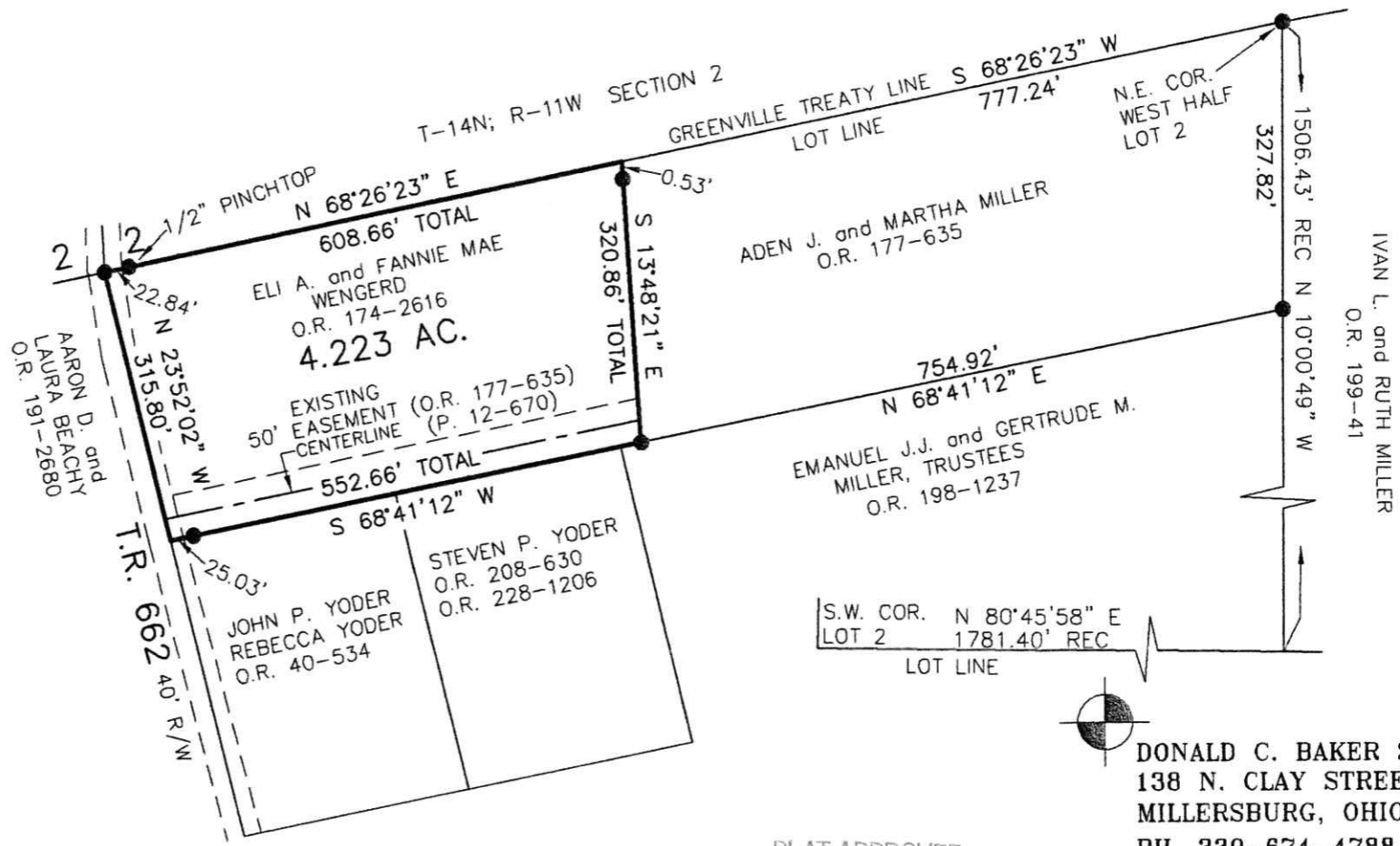
I CERTIFY THIS SURVEY TO BE CORRECT
 TO THE BEST OF MY KNOWLEDGE.

Donald C. Baker

DONALD C. BAKER P.S. 6938

DATE: NOV. 25, 2013

FDB\KES
 FILE NAME: WORK4\S-576-13



APPROVED FOR TRANSFER ONLY
 NO SUBDIVISION PLAT REQUIRED
 (O.R.C. 711.001 & 711.131)
 Lot(s) not for building unless
 approved by Board of Health.



HOLMES CO. PLANNING COMMISSION
 approved by Board of Health.



PLAT APPROVED

12/6/2013

DONALD C. BAKER SURVEYING
 138 N. CLAY STREET
 MILLERSBURG, OHIO 44654
 PH. 330-674-4788
 FAX 330-674-6027