

RICHLAND TOWNSHIP  
 S.E. QTR. SECTION 7  
 T-8 N; R-8 W  
 HOLMES COUNTY, OHIO

RETRACEMENT SURVEY  
 OF A 14 ACRE (MORE  
 OR LESS) TRACT  
 CONVEYED IN O.R. VOL  
 218 PAGE 543

201300085837  
 B: 19 P: 2354  
 FILED FOR RECORD IN  
 HOLMES COUNTY, OH  
 ANITA HALL, COUNTY RECORDER  
 10/28/2013 12:01 PM  
 SMALL PLAT . 40.00  
 PAGES: 1  
 CRV 246 PG 6605

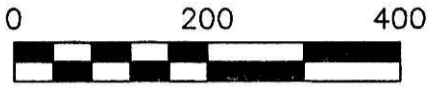
SURVEYED FOR: GEORGE PAHOUNDIS

APPROVED FOR TRANSFER ONLY  
 NO SUBDIVISION PLAT REQUIRED

(O.R.C. 711.001 & 711.131)  
 Lot(s) not for building unless  
 approved by Board of Health.



HOLMES CO. PLANNING COMMISSION  
 By JB Date 5-8-13



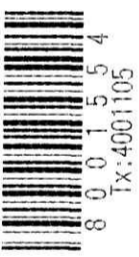
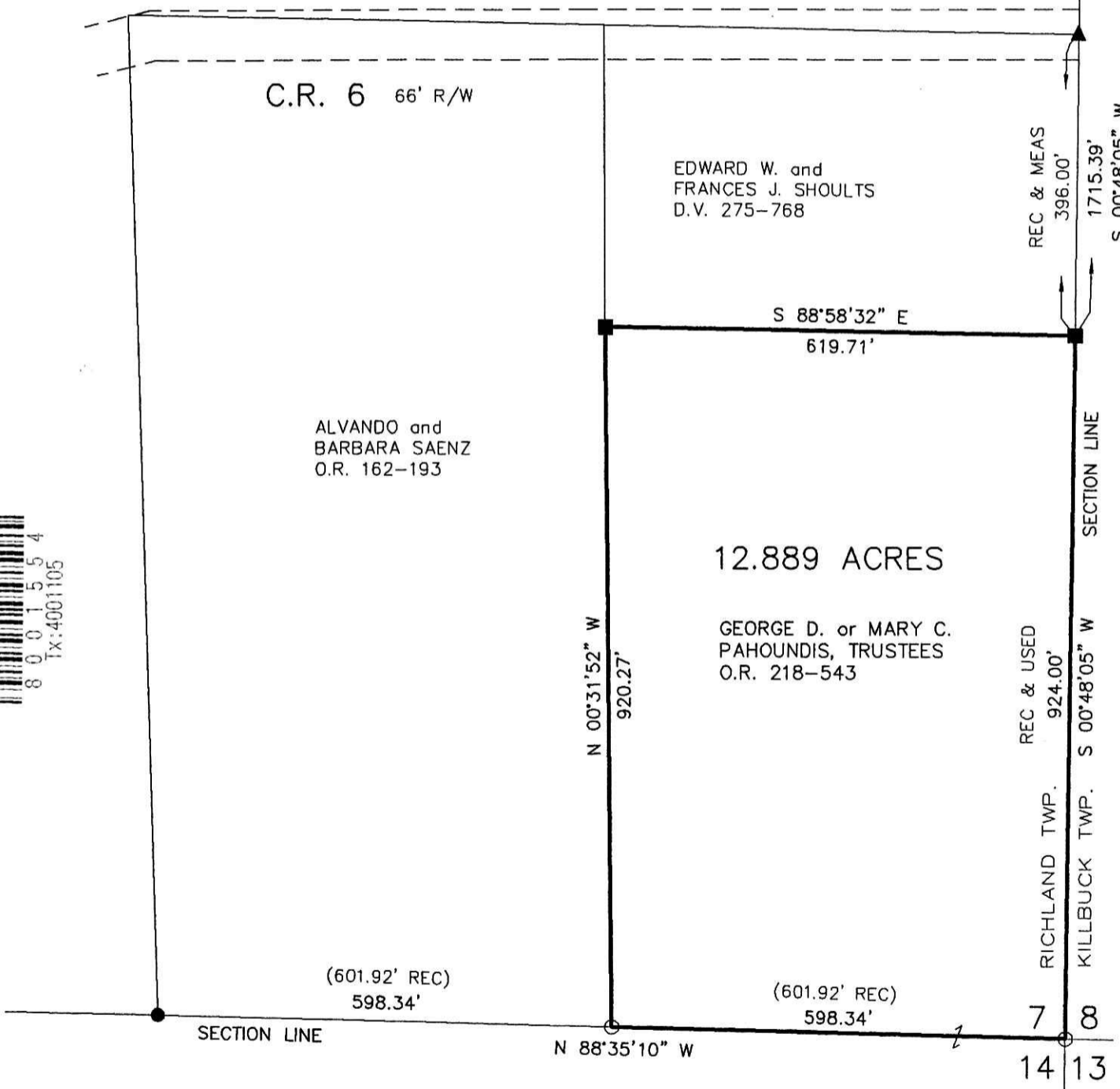
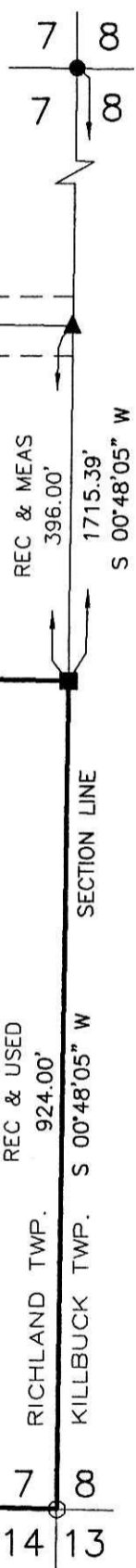
SCALE: 1"=200'

- STONE FOUND
- ▲ R.R. SPIKE FOUND
- 5/8" REBAR FOUND  
UNLESS OTHERWISE NOTED
- 5/8" REBAR SET WITH I.D. CAP  
I.D. CAP MARKED "BAKER 6938"

REFERENCES

- DEED VOL. 275 PAGE 768
- O.R. VOL. 162 PAGE 193
- O.R. VOL. 218 PAGE 543
- SURVEY RECORD 4-298
- PLAT VOL. 2 PAGE 479
- PLAT VOL. 14 PAGE 114
- BEARINGS FROM PLAT VOL. 2 PAGE 479

ORIGINAL PLAT FILED WITH MAP OFFICE  
 ANITA HALL, RECORDER



PLAT APPROVED

5/6/2013

I CERTIFY THIS SURVEY TO BE CORRECT  
 TO THE BEST OF MY KNOWLEDGE.

*Donald C. Baker*

DONALD C. BAKER P.S. 6938  
 DATE: APRIL 5, 2013  
 FDB\CJG  
 FILE NAME: WORK4\S-96-13\MLD



DONALD C. BAKER SURVEYING  
 138 N. CLAY STREET  
 MILLERSBURG, OHIO 44654  
 PH. 330-674-4788  
 FAX 330-674-6027