

SCALE: 1"=100'

- STONE FOUND
- 5/8" REBAR FOUND
UNLESS OTHERWISE NOTED
- 5/8" REBAR SET WITH I.D. CAP
I.D. CAP MARKED "BAKER 6938"

REFERENCES

- O.R. VOL. 187 PAGE 2396
- O.R. VOL. 184 PAGE 1569
- O.R. VOL. 184 PAGE 1565
- PLAT VOL. 19 PAGE 533
- PLAT VOL. 19 PAGE 661
- PLAT VOL. 19 PAGE 1379
- BEARINGS FROM PLAT VOL. 19 PAGE 661

CLARK TOWNSHIP
S.E. QTR. SECTION 16
T-8 N; R-4 W
HOLMES COUNTY, OHIO

Additional approval for this and any adjacent properties must be requested and granted prior to any future transfers by deed. Recording of this document does not waive the requirements of local Health District Subdivision Regulations or other governing authorities which may be in effect at the time of any future deed transfer.

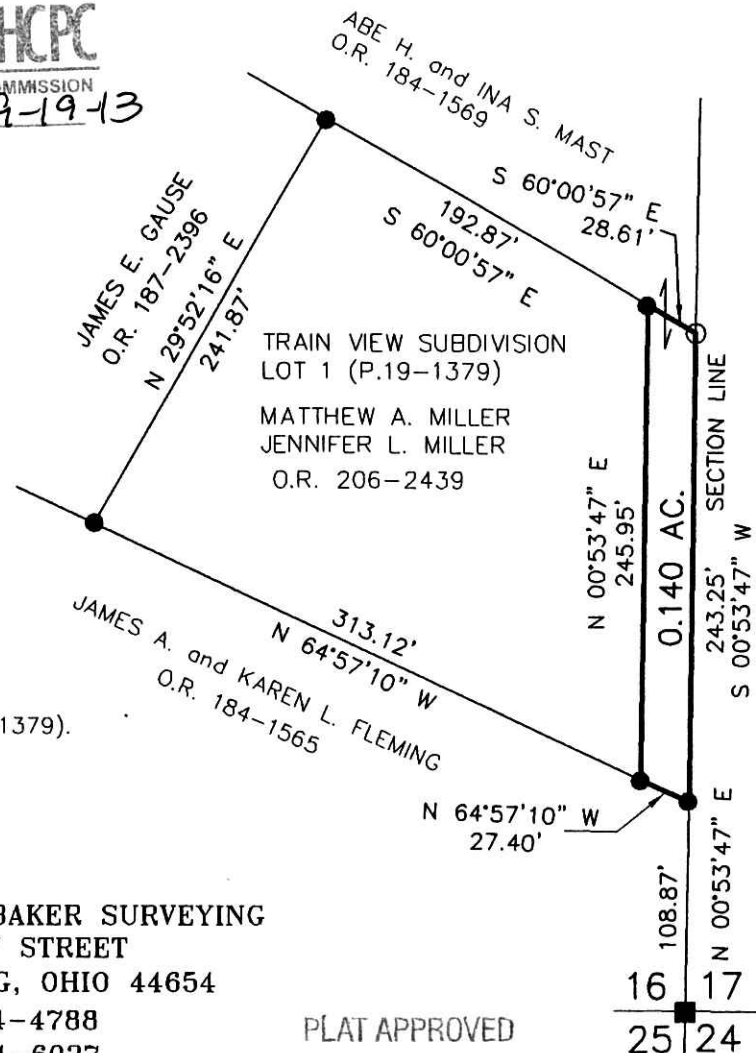


APPROVED FOR TRANSFER ONLY
NO SUBDIVISION PLAT REQUIRED
(O.R.C. 711.001 & 711.131)
Lot(s) not for building unless
approved by Board of Health
HOLMES CO. PLANNING COMMISSION
By QJB Date 9-19-13

201300085433

B: 19 P: 2339
FILED FOR RECORD IN
HOLMES COUNTY, OH
ANITA HALL, COUNTY RECORDER
09/27/2013 3:41 PM
SMALL PLAT . 40.00
PAGES: 1

ORV 246 pg 281



This plat only to be used in conjunction with Train View Subdivision, Replat of Lot 1 and Additional lands for transfer to the adjacent owner of Lot 1, Train View Subdivision (P.19-1379).



I CERTIFY THIS SURVEY TO BE CORRECT TO THE BEST OF MY KNOWLEDGE.

Donald C. Baker
DONALD C. BAKER P.S. 6938
DATE: AUG. 26, 2013



DONALD C. BAKER SURVEYING
138 N. CLAY STREET
MILLERSBURG, OHIO 44654
PH. 330-674-4788
FAX 330-674-6027

PLAT APPROVED

9/18/2013

