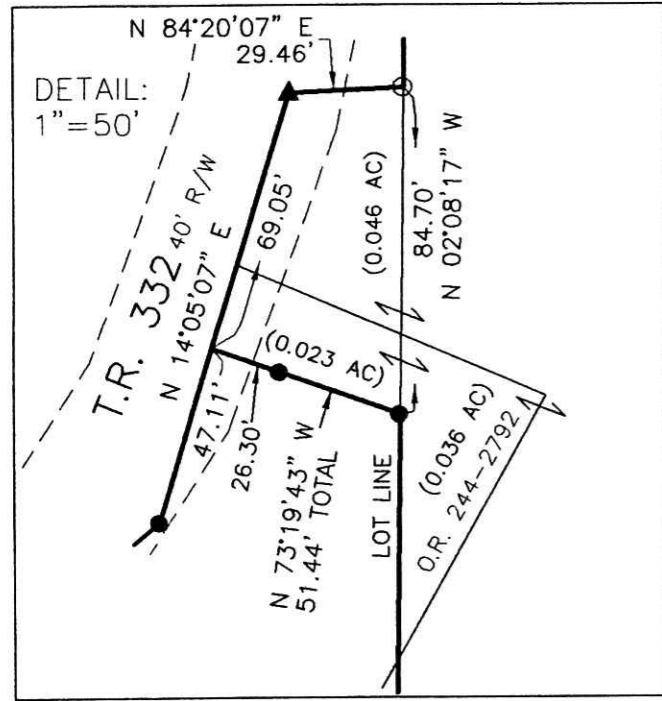


HARDY TOWNSHIP  
 1ST. QTR., LOTS 30 & 31  
 T-9 N; R-7 W  
 HOLMES COUNTY, OHIO

SURVEYED FOR: ELMER WEBER

201300085405  
 B: 19 P: 2337  
 FILED FOR RECORD IN  
 HOLMES COUNTY, OH  
 ANITA HALL, COUNTY RECORDER  
 09/26/2013 3:26 PM  
 SMALL PLAT . 40.00  
 PAGES: 1

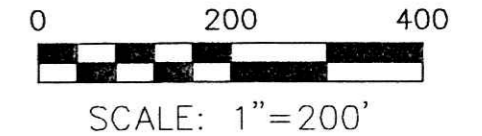
ORV 246 pg 4204



REFERENCES

PLAT VOL. 9 PAGE 119	DEED VOL. 154 PAGE 159
PLAT VOL. 10 PAGE 744	DEED VOL. 219 PAGE 807
PLAT VOL. 7 PAGE 157	DEED VOL. 231 PAGE 771
PLAT VOL. 12 PAGE 301	DEED VOL. 246 PAGE 374
PLAT VOL. 14 PAGE 338	O.R. VOL. 159 PAGE 251
PLAT VOL. 11 PAGE 160	O.R. VOL. 206 PAGE 2043
PLAT VOL. 17 PAGE 681	O.R. VOL. 226 PAGE 483
PLAT VOL. 19 PAGE 2284	O.R. VOL. 244 PAGE 2789
BEARINGS FROM PLAT VOL. 10 PAGE 774	O.R. VOL. 244 PAGE 2792

ALAN B. BIGLER and MARY E. HOPKINS D.V. 231-771



- STONE FOUND
- ▲ R.R. SPIKE FOUND
- 5/8" REBAR FOUND
- UNLESS OTHERWISE NOTED
- △ R.R. SPIKE SET
- 5/8" REBAR SET WITH I.D. CAP
- I.D. CAP MARKED "BAKER 6938"

NO SUBDIVISION PLAT...  
 (O.R. 711, 501 & 712)  
 Lots not for building...  
 approved by Board of Health.  
 HOLMES CO. PLANNING COMMISSION  
 By: *JB* Date: 8-6-13



24.000 AC.  
 LOT 30 - 19.993 AC.  
 LOT 31 - 4.007 AC.

ELMER L. and PAULINE A. WEBER  
 D.V. 154-159  
 O.R. 206-2043

REX A. and RITA J. HUMMEL  
 O.R. 226-483

RUBY M. MILLER  
 D.V. 231-394  
 D.V. 246-374

NOTE: LINE ALONG ROAD  
 ESTABLISHED FROM P.V. 9-119.  
 T.R. 332 40' R/W

32|31 1870.21' N 87°09'12" E LOT LINE S 87°09'12" W 701.80' (679.80' REC)  
 37|36 31|30 36|35 30|29 35|34  
 328.02' LOT LINE 1359.23' S 02°32'55" E  
 328.87' N 02°08'17" W  
 248.30' N 02°08'17" W  
 328.87' N 02°08'17" W  
 277.61' N 02°08'17" W  
 277.61' N 02°08'17" W  
 388.74' (REC & USED)  
 16.53'  
 922.97' TOTAL N 87°23'28" E (933.24' REC)  
 5/8" ROD  
 (933.9' REC) 937.28'  
 S 02°45'52" E  
 AMOS J. and EDNA MILLER D.V. 219-807  
 (REC & MEAS) 933.24' LOT LINE  
 1653.20' S 87°15'26" W

DONALD C. BAKER SURVEYING  
 138 N. CLAY STREET  
 MILLERSBURG, OHIO 44654  
 PH. 330-674-4788  
 FAX 330-674-6027



PLAT APPROVED  
*8/6/2013*

I CERTIFY THIS SURVEY TO BE CORRECT  
 TO THE BEST OF MY KNOWLEDGE.  
*Donald C. Baker*  
 DONALD C. BAKER P.S. 6938  
 DATE: JULY 18, 2013  
 FDB/KES  
 FILE NAME: WORK4\S-120A-13