

# SCENIC SUBDIVISION, FIRST ADDITION

PLAT VOL. 19 PAGE 948

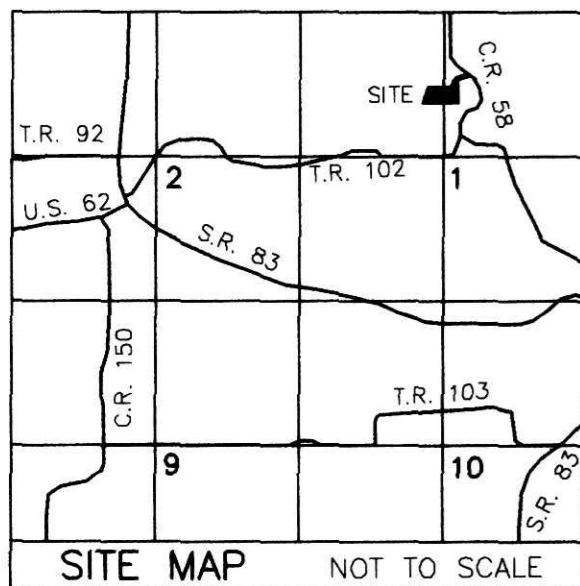
## REPLAT OF LOT 2 and ADDITIONAL LANDS

(FINAL)

### REFERENCES

O.R. VOL. 180 PAGE 1737  
 O.R. VOL. 195 PAGE 1378  
 PLAT VOL. 16 PAGE 295  
 PLAT VOL. 18 PAGE 7  
 PLAT VOL. 18 PAGE 195  
 PLAT VOL. 18 PAGE 639  
 PLAT VOL. 19 PAGE 407  
 PLAT VOL. 19 PAGE 785  
 PLAT VOL. 19 PAGE 948  
 BEARINGS FROM PLAT VOL. 18 PAGE 7

AGENT:  
 DOUG TWEED  
 2404 N. HAVEN BLVD  
 CUYAHOGA FALLS, OHIO 44223  
 PHONE: 330-620-7734



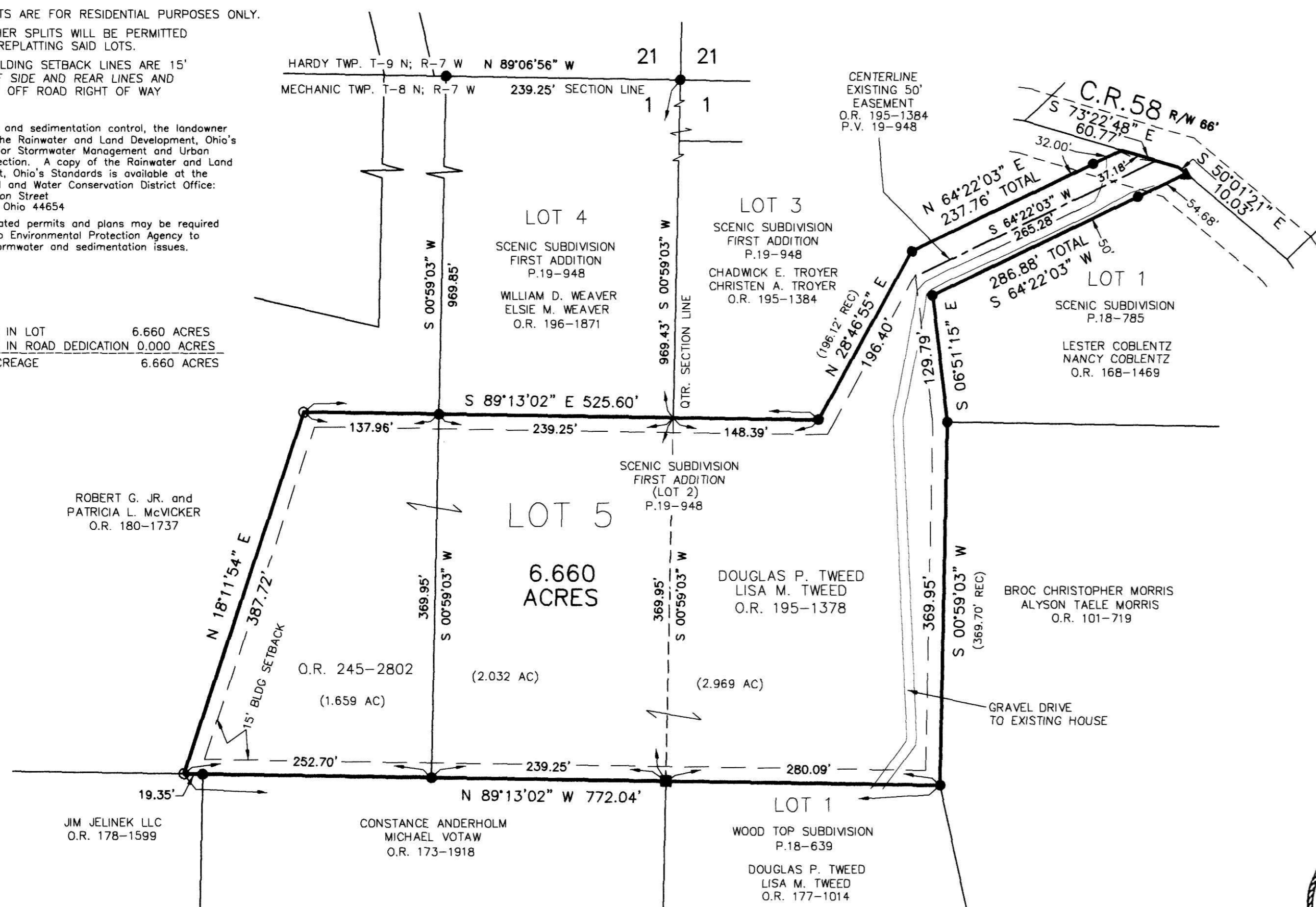
THESE LOTS ARE FOR RESIDENTIAL PURPOSES ONLY.  
 NO FURTHER SPLITS WILL BE PERMITTED  
 WITHOUT REPLATING SAID LOTS.

NOTE: BUILDING SETBACK LINES ARE 15'  
 OFF SIDE AND REAR LINES AND  
 30' OFF ROAD RIGHT OF WAY

For erosion and sedimentation control, the landowner  
 will follow the Rainwater and Land Development, Ohio's  
 Standards for Stormwater Management and Urban  
 Street Protection. A copy of the Rainwater and Land  
 Development, Ohio's Standards is available at the  
 Holmes Soil and Water Conservation District Office:  
 62 W. Clinton Street  
 Millersburg, Ohio 44654

State regulated permits and plans may be required  
 by the Ohio Environmental Protection Agency to  
 address stormwater and sedimentation issues.

ACREAGE IN LOT 6.660 ACRES  
 ACREAGE IN ROAD DEDICATION 0.000 ACRES  
 TOTAL ACREAGE 6.660 ACRES



NOTE: SIGN IN PERMANENT BLACK INK

### CERTIFICATE OF OWNERSHIP AND DEDICATION

We certify that we are the owners of the property  
 shown and described hereon and that we hereby adopt this  
 plan of subdivision with our free consent and establish the  
 minimum building restriction lines.

*Douglas P. Tweed* 8/14/13  
 DOUGLAS P. TWEED DATE  
*Lisa M. Tweed* 8/14/13  
 LISA M. TWEED DATE

### CERTIFICATE OF DEDICATION OF EASEMENT

We certify that we are the owners of the property shown  
 and described hereon and that we hereby grant to Lots  
 3 and 5 the 50.00 foot ingress/egress easement as  
 shown on this plat.

*Douglas P. Tweed* 8/14/13  
 DOUGLAS P. TWEED DATE  
*Lisa M. Tweed* 8/14/13  
 LISA M. TWEED DATE

### CERTIFICATE OF APPROVAL OF WATER SUPPLY AND SEWAGE TREATMENT SYSTEMS

I hereby certify that the subdivision plat entitled SCENIC  
 SUBDIVISION, FIRST ADDITION REPLAT OF LOT 2 and  
 ADDITIONAL LANDS meets the requirements of the Board of  
 Health for water supply and sewage treatment and is hereby  
 approved for recording. The issuance of permits to install  
 a private water system and on-site sewage treatment  
 system of any lot is dependent on a site specific evaluation  
 prior to the start of any construction.

*D. McFadden* 8/29/13  
 Health Commissioner DATE

### CERTIFICATE OF APPROVAL BY THE HOLMES SOIL AND WATER CONSERVATION DISTRICT

I hereby certify that I have approved the subdivision plat  
 and/or agreements or provisions for sedimentation and  
 erosion control as stated or shown hereon.

*Phyllis Gilmore* 8-28-2013  
 Holmes Soil and Water Conservation District DATE

### CERTIFICATE OF APPROVAL BY THE COUNTY COMMISSIONERS

I hereby certify that the County Commissioners have  
 approved the subdivision plat as shown hereon.

*David L. Gerber* 9/5/13  
 Chairman, County Commissioners DATE

### CERTIFICATE OF APPROVAL OF PLAT

I hereby certify that I have approved the plat shown hereon.

*Christopher R. Young, P.E., P.S.* 8/28/13  
 County Engineer DATE

### CERTIFICATE OF APPROVAL FOR RECORDING

I hereby certify that the subdivision plat shown hereon has  
 been found to comply with the subdivision regulations for  
 Holmes County, Ohio, with the exception of such variances,  
 if any, as presented in the minutes of the Holmes County  
 Planning Commission and that it has been approved for  
 recording in the office of the County Recorder.

*Aaron L. Gerber* 8/28/13  
 Holmes County Planning Commission DATE

### CERTIFICATE OF ACCURACY

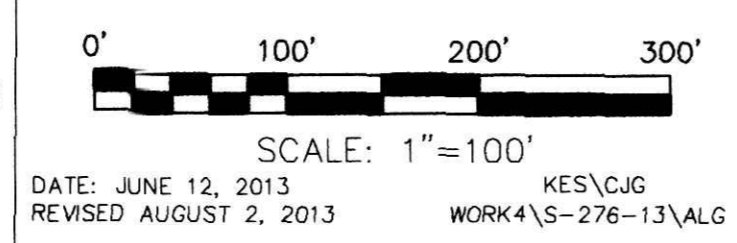
I hereby certify that the plan shown and described hereon is  
 a true and correct survey to the accuracy required by the  
 Holmes County Planning Commission and that the monuments  
 have been placed as shown hereon.

*A.L.G.* 8-9-13  
 Aaron L. Gerber P.S. 8379 DATE



**DONALD C. BAKER SURVEYING**  
 138 N. CLAY STREET  
 MILLERSBURG, OHIO 44654  
 PH. 330-674-4788  
 FAX 330-674-6027

MECHANIC TOWNSHIP  
 N.E. & N.W. QTRS. SECTION 1  
 T-8 N; R-7 W  
 HOLMES COUNTY, OHIO



- STONE FOUND
- ▲ R.R. SPIKE FOUND
- 5/8" REBAR FOUND UNLESS OTHERWISE NOTED
- 5/8" REBAR SET WITH I.D. CAP I.D. CAP MARKED "BAKER 6938"

TRANSFER NOT NECESSARY  
 DATE 9-12-13  
 AUDITOR *Sarah Miller*