



SCALE: 1"=200'

- 5/8" REBAR FOUND UNLESS OTHERWISE NOTED
- 5/8" REBAR SET WITH I.D. CAP I.D. CAP MARKED "BAKER 6938"

REFERENCES

DEED VOL. 247 PAGE 100  
 O.R. VOL. 197 PAGE 2047  
 O.R. VOL. 223 PAGE 699  
 PLAT VOL. 19 PAGE 1047  
 PLAT VOL. 12 PAGE 417  
 BEARINGS FROM PLAT VOL. 19 PAGE 1047



I CERTIFY THIS SURVEY TO BE CORRECT TO THE BEST OF MY KNOWLEDGE.

*Donald C. Baker*

DONALD C. BAKER P.S. 6938

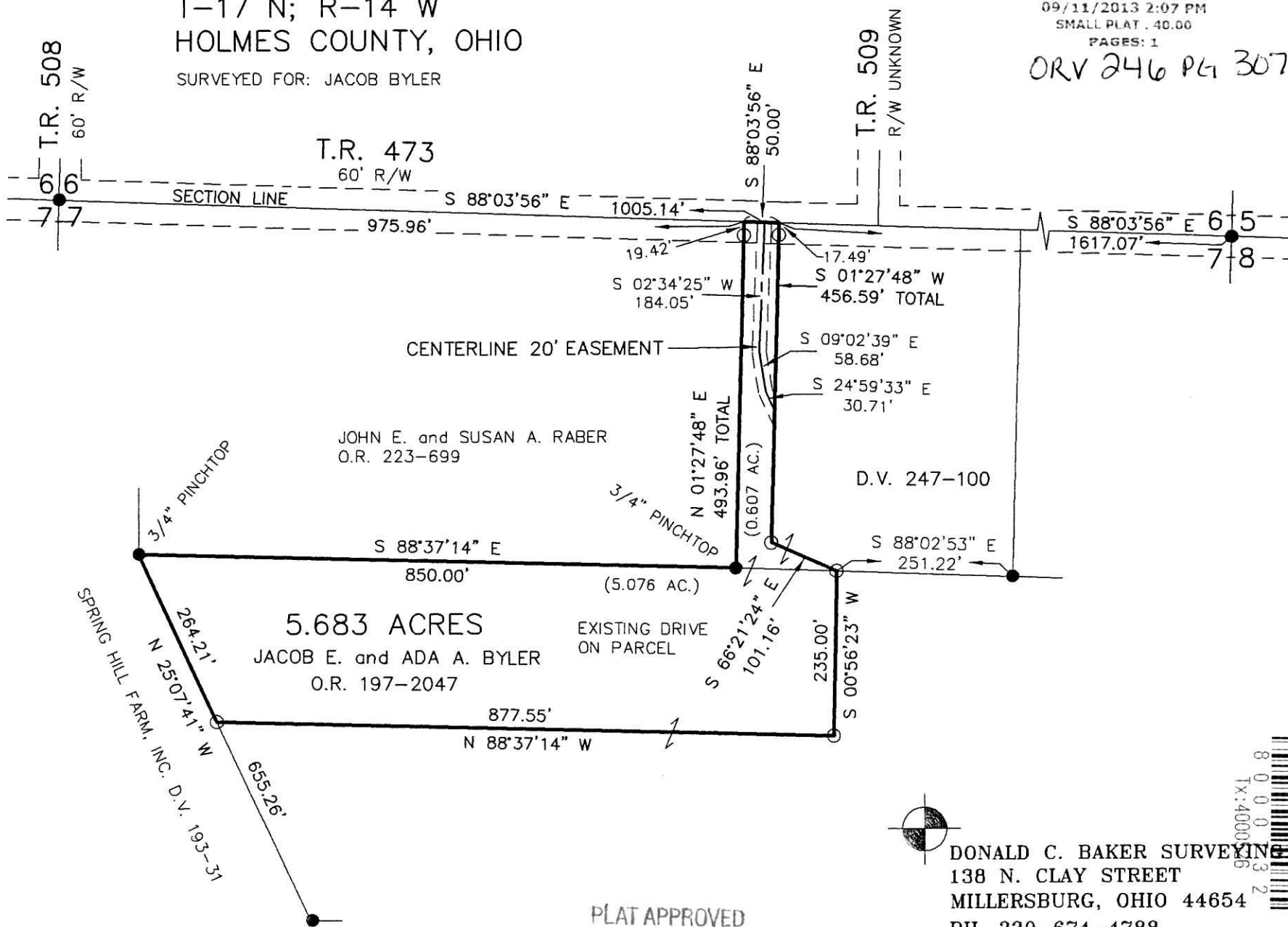
DATE: APRIL 2, 2013

FDB\ACB

FILE NAME: WORK4\S-123-13\MLD

RIPLEY TOWNSHIP  
 N.E. QTR. SECTION 7  
 T-17 N; R-14 W  
 HOLMES COUNTY, OHIO

SURVEYED FOR: JACOB BYLER



201300085191

B: 19 P: 2328

FILED FOR RECORD IN  
 HOLMES COUNTY, OH  
 ANITA HALL, COUNTY RECORDER

09/11/2013 2:07 PM  
 SMALL PLAT . 40.00

PAGES: 1

ORV 246 PL 3078



DONALD C. BAKER SURVEYING  
 138 N. CLAY STREET  
 MILLERSBURG, OHIO 44654  
 PH. 330-674-4788  
 FAX 330-674-6027

PLAT APPROVED

9/3/2013

