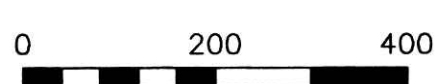


ORV 246 PG 2718

PRAIRIE TOWNSHIP
 N.W. QTR. SECTION 35
 T-14 N; R-13 W
 HOLMES COUNTY, OHIO

SURVEYED FOR: JACOB TROYER

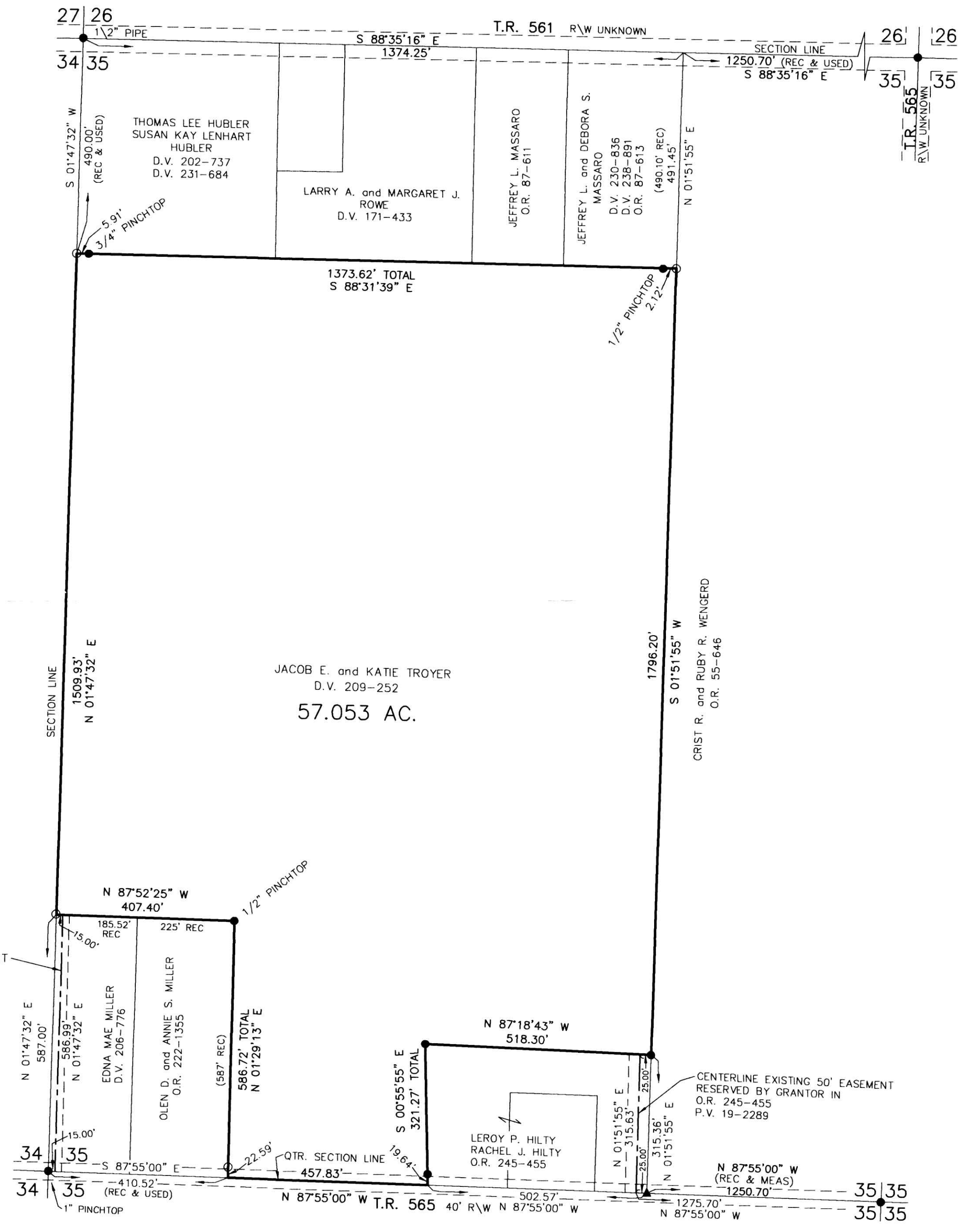


SCALE: 1"=200'

- ▲ R.R. SPIKE FOUND
- 5/8" REBAR FOUND UNLESS OTHERWISE NOTED
- 5/8" REBAR SET WITH I.D. CAP I.D. CAP MARKED "BAKER 6938"

REFERENCES

- DEED VOL. 171 PAGE 433
 - DEED VOL. 206 PAGE 776
 - DEED VOL. 209 PAGE 252
 - DEED VOL. 231 PAGE 684
 - O.R. VOL. 55 PAGE 646
 - O.R. VOL. 87 PAGE 611
 - O.R. VOL. 87 PAGE 613
 - O.R. VOL. 222 PAGE 1355
 - O.R. VOL. 245 PAGE 455
 - PLAT VOL. 5 PAGE 11
 - PLAT VOL. 8 PAGE 464
 - PLAT VOL. 8 PAGE 8
 - PLAT VOL. 10 PAGE 549
 - PLAT VOL. 18 PAGE 77
 - PLAT VOL. 18 PAGE 541
 - PLAT VOL. 19 PAGE 2289
- BEARINGS FROM
 PLAT VOL. 19 PAGE 2289



CENTERLINE EXISTING 30' ACCESS EASEMENT FOR INGRESS AND EGRESS
 D.V. 206-776
 P.V. 8-464

CENTERLINE EXISTING 50' EASEMENT RESERVED BY GRANTOR IN
 O.R. 245-455
 P.V. 19-2289



I CERTIFY THIS SURVEY TO BE CORRECT TO THE BEST OF MY KNOWLEDGE.
 Donald C. Baker
 DONALD C. BAKER P.S. 6938
 DATE: AUG. 7, 2013
 FDB/KES
 FILE NAME: WORK4\S-350-13

APPROVED FOR TRANSFER ONLY
 NO SUBDIVISION PLAT REQUIRED
 (O.R.C. 711.031 & 711.131)
 (Seals) not for building unless approved by Board of Health
 HOLMES CO. PLANNING COMMISSION
 By: JB Date: 8-22-13

PLAT APPROVED
 8/21/2013

DONALD C. BAKER SURVEYING
 138 N. CLAY STREET
 MILLERSBURG, OHIO 44654
 PH. 330-674-4788
 FAX 330-674-6027

