

REFERENCES
DEED VOL. 250 PAGE 517
DEED VOL. 261 PAGE 741
O.R. VOL. 36 PAGE 502
PLAT VOL. 17 PAGE 204
PLAT VOL. 19 PAGE 2068
BEARINGS FROM
PLAT VOL. 17 PAGE 204

SALT CREEK TOWNSHIP
N.W. QTR. SECTION 25
S.W. QTR. SECTION 25
T-15 N; R-12 W
HOLMES COUNTY, OHIO

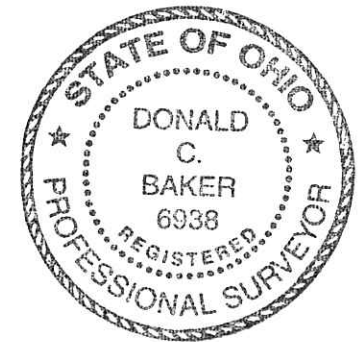
SURVEYED FOR: ERVIN HERSHBERGER

WAYNE CO.
HOLMES CO. 25 25

201300081936
Filed for Record in
HOLMES COUNTY, OH
ANITA HALL, COUNTY RECORDER
02-15-2013 At 03:59 pm.
SMALL PLAT 40.00
OR Book 19 Page 2215 - 2215

OR 241 pgs 2338 +
2342 +
2352

201300081936
HEARTLAND
TITLE
MILLERSBURG OH



I CERTIFY THIS SURVEY TO BE CORRECT TO THE BEST OF MY KNOWLEDGE.

Donald C. Baker

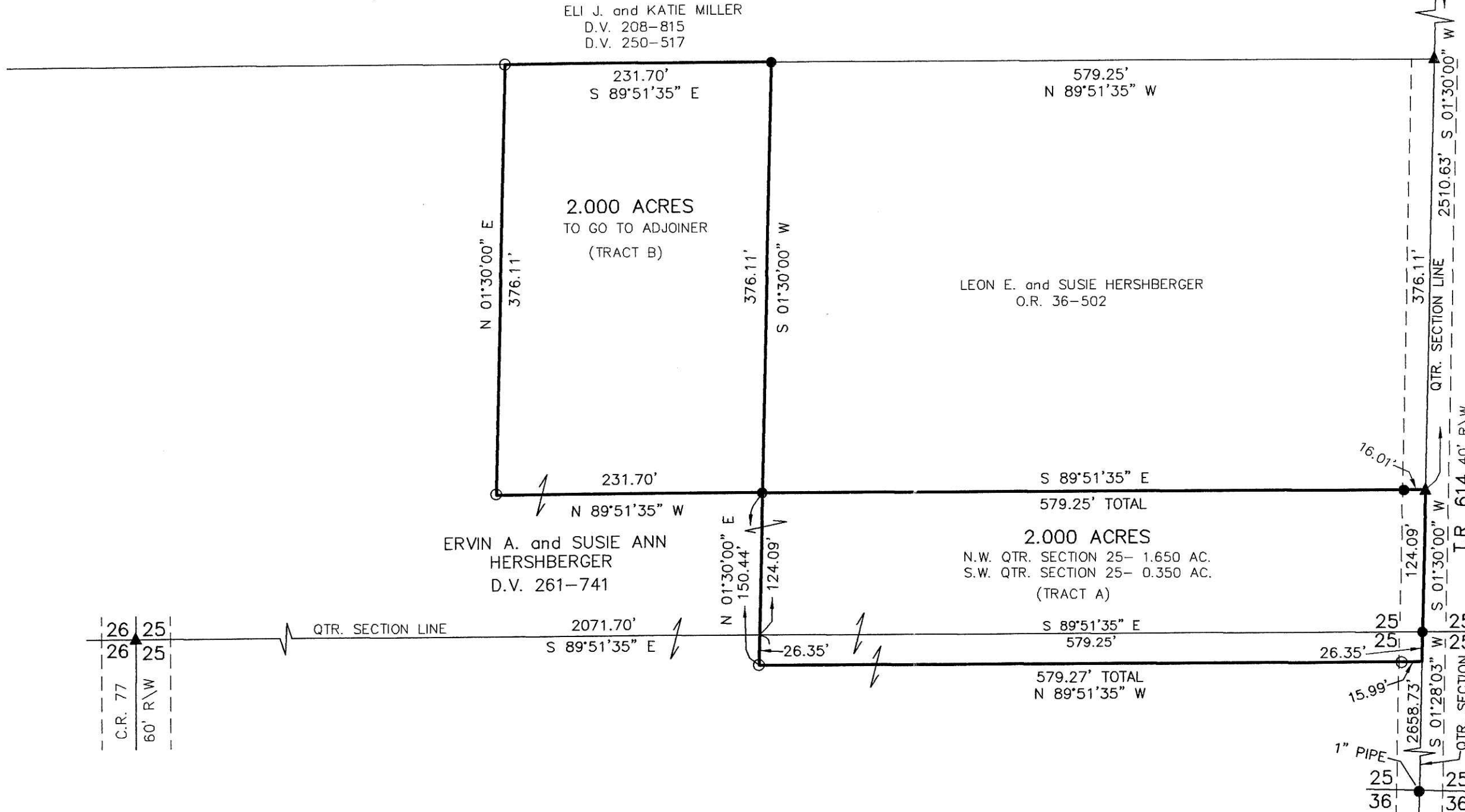
DONALD C. BAKER P.S. 6938

DATE: DEC. 26, 2012

FDB\KES

FILE NAME: WORK4\S-619-12

DONALD C. BAKER SURVEYING
138 N. CLAY STREET
MILLERSBURG, OHIO 44654
PH. 330-674-4788
FAX 330-674-6027



PLAT APPROVED

1/31/2013