

201300081934
Filed for Record in
HOLMES COUNTY, OH
ANITA HALL, COUNTY RECORDER
02-15-2013 At 03:59 pm.
SMALL PLAT 40.00
OR Book 19 Page 2214 - 2214

OR 241 p 2336

201300081934
HEARTLAND
TITLE
MILLERSBURG OH

REFERENCES

- O.R. VOL. 12 PAGE 879
- O.R. VOL. 238 PAGE 2472
- PLAT VOL. 7 PAGE 447
- PLAT VOL. 10 PAGE 272
- PLAT VOL. 14 PAGE 134
- PLAT VOL. 17 PAGE 382
- PLAT VOL. 16 PAGE 421
- BEARINGS FROM
PLAT VOL. 14 PAGE 134

PAINT TOWNSHIP
N.W. QTR. SECTION 6
T-14 N; R-11 W
HOLMES COUNTY, OHIO

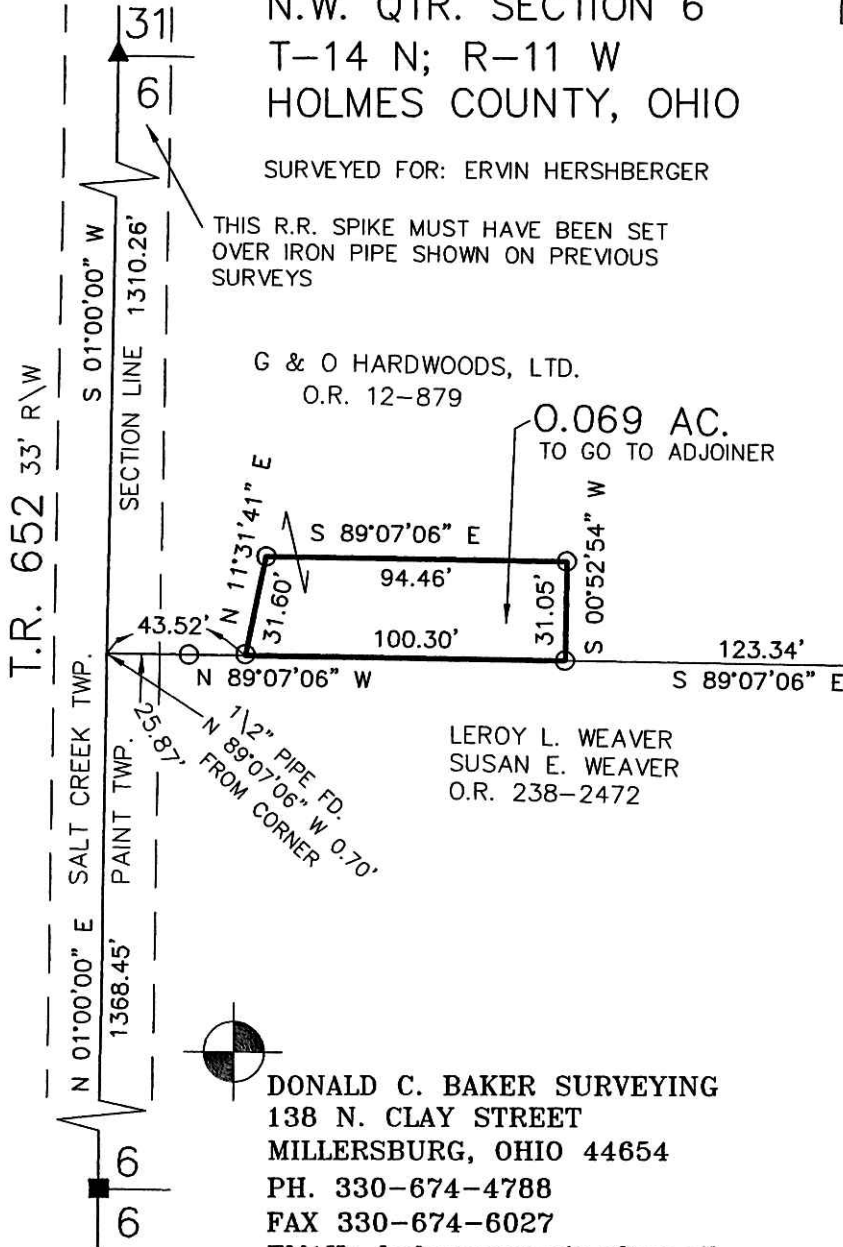
SURVEYED FOR: ERVIN HERSHBERGER

THIS R.R. SPIKE MUST HAVE BEEN SET
OVER IRON PIPE SHOWN ON PREVIOUS
SURVEYS



SCALE: 1"=60'

- ▲ R.R. SPIKE FOUND
- STONE FOUND
- 5/8" REBAR FOUND
UNLESS OTHERWISE NOTED
- 5/8" REBAR SET WITH I.D. CAP
I.D. CAP MARKED "BAKER 6938"



LEROY L. WEAVER
SUSAN E. WEAVER
O.R. 238-2472

DONALD C. BAKER SURVEYING
138 N. CLAY STREET
MILLERSBURG, OHIO 44654
PH. 330-674-4788
FAX 330-674-6027
EMAIL: bakersurveying@gmail.com



I CERTIFY THIS SURVEY TO BE CORRECT
TO THE BEST OF MY KNOWLEDGE.

Donald C. Baker
DONALD C. BAKER P.S. 6938

DATE: JAN. 3, 2013
KES\CJG
FILE NAME: WORK5-2011\S-623-12

PLAT APPROVED

1/31/2013