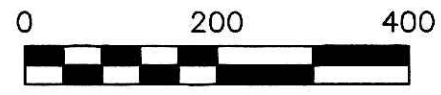


201200081094
 Filed for Record in
 HOLMES COUNTY, OH
 ANITA HALL, COUNTY RECORDER
 12-20-2012 At 11:12 am.
 PLAT MED 43.20
 DR Book 19 Page 2181 - 2181
 ORV 240 PG 1109

201200081094
 HOLMES COUNTY TITLE
 MILLERSBURG OH 44634



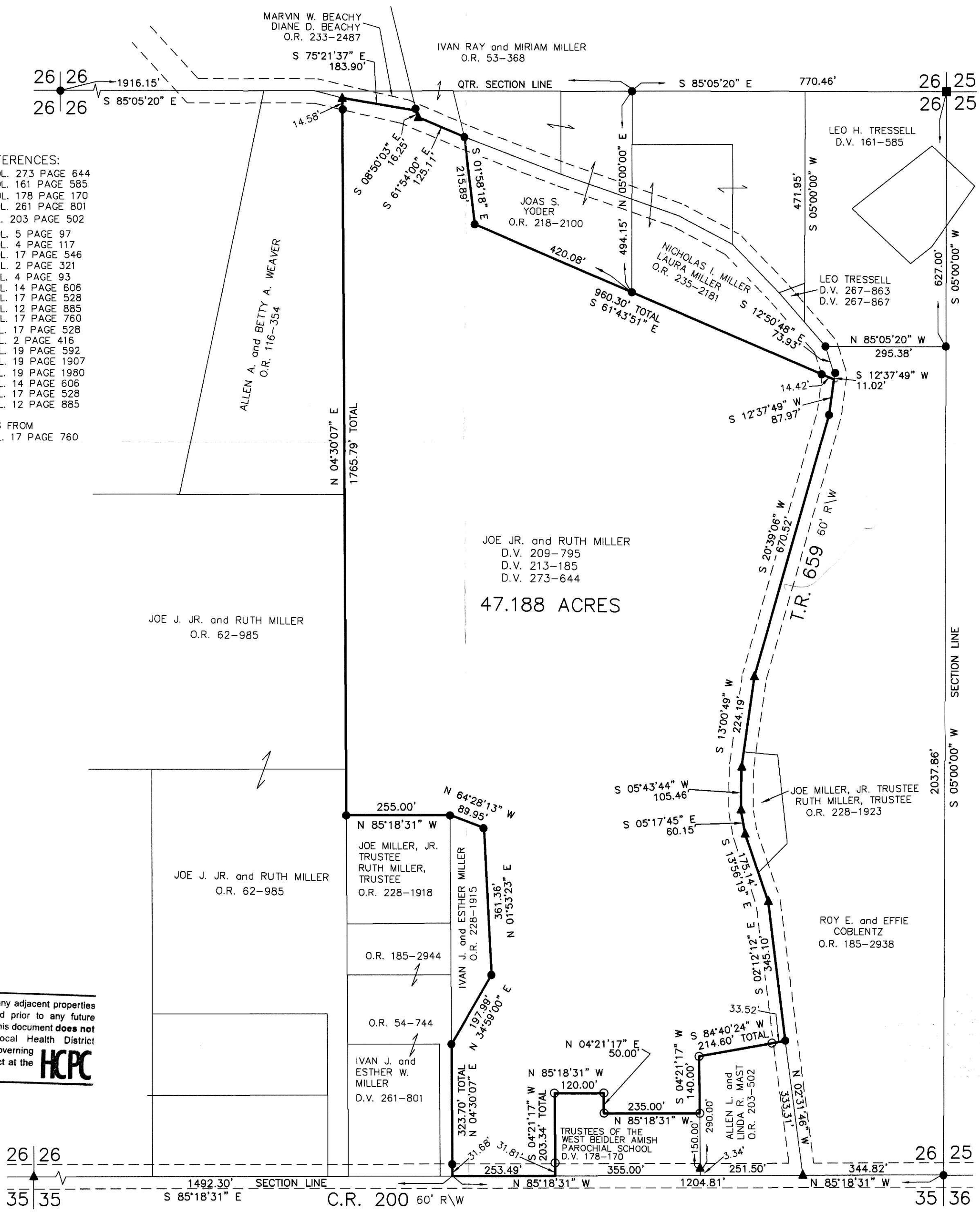
SCALE: 1"=200'

- STONE FOUND
- ▲ R.R. SPIKE FOUND
- 5/8" REBAR FOUND UNLESS OTHERWISE NOTED
- △ R.R. SPIKE SET
- 5/8" REBAR WITH I.D. CAP SET I.D. CAP MARKED "BAKER 6938"

PAINT TOWNSHIP
 S.E. QTR. SECTION 26
 T-15 N; R-11 W
 HOLMES COUNTY, OHIO

PREPARED FOR: JOE MILLER

- REFERENCES:
- DEED VOL. 273 PAGE 644
 - DEED VOL. 161 PAGE 585
 - DEED VOL. 178 PAGE 170
 - DEED VOL. 261 PAGE 801
 - O.R. VOL. 203 PAGE 502
 - PLAT VOL. 5 PAGE 97
 - PLAT VOL. 4 PAGE 117
 - PLAT VOL. 17 PAGE 546
 - PLAT VOL. 2 PAGE 321
 - PLAT VOL. 4 PAGE 93
 - PLAT VOL. 14 PAGE 606
 - PLAT VOL. 17 PAGE 528
 - PLAT VOL. 12 PAGE 885
 - PLAT VOL. 17 PAGE 760
 - PLAT VOL. 17 PAGE 528
 - PLAT VOL. 2 PAGE 416
 - PLAT VOL. 19 PAGE 592
 - PLAT VOL. 19 PAGE 1907
 - PLAT VOL. 19 PAGE 1980
 - PLAT VOL. 14 PAGE 606
 - PLAT VOL. 17 PAGE 528
 - PLAT VOL. 12 PAGE 885
- BEARINGS FROM
 PLAT VOL. 17 PAGE 760



Additional approval for this and any adjacent properties must be requested and granted prior to any future transfers by deed. Recording of this document does not waive the requirements of local Health District Subdivision Regulations or other governing authorities which may be in effect at the time of any future deed transfer.



DONALD C. BAKER SURVEYING
 138 N. CLAY ST.
 MILLERSBURG, OH 44654
 PH. 330-674-4788
 FAX: 330-674-6027

NOTE: THIS IS NOT A FIELD SURVEY, BUT A REVISION OF A SURVEY I MADE ON DEC. 29, 2004 WITH THE FOLLOWING SURVEYS. P.V. 19-592, P.V. 19-1907 AND P.V. 19-1980.

APPROVED FOR TRANSFER ONLY
 NO SUBDIVISION PLAT REQUIRED
 (O.R.C. 711.001 & 711.131)
 Lot(s) not for building unless approved by Board of Health.
 HOLMES CO. PLANNING COMMISSION
 By: *[Signature]* Date: 11-26-12



I CERTIFY THIS SURVEY TO BE CORRECT TO THE BEST OF MY KNOWLEDGE.
[Signature]
 DONALD C. BAKER PS 6938
 DATE: NOV. 8, 2012
 File Name: C:\WORK4\S-557-12

PLAT APPROVED

11/20/2012