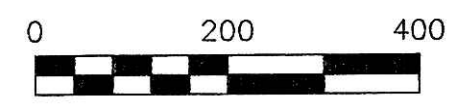


RICHLAND TOWNSHIP
N.E. QTR. SECTION 15
T-8 N; R-8 W
HOLMES COUNTY, OHIO

SURVEYED FOR: DAVE KAUFMAN REALTY

201200079557
Filed for Record in
HOLMES COUNTY, OH
ANITA HALL, COUNTY RECORDER
09-19-2012 At 11:14 AM.
SMALL PLAT 40.00
OR Book 19 Page 2127 - 2127

OR 237p 3088



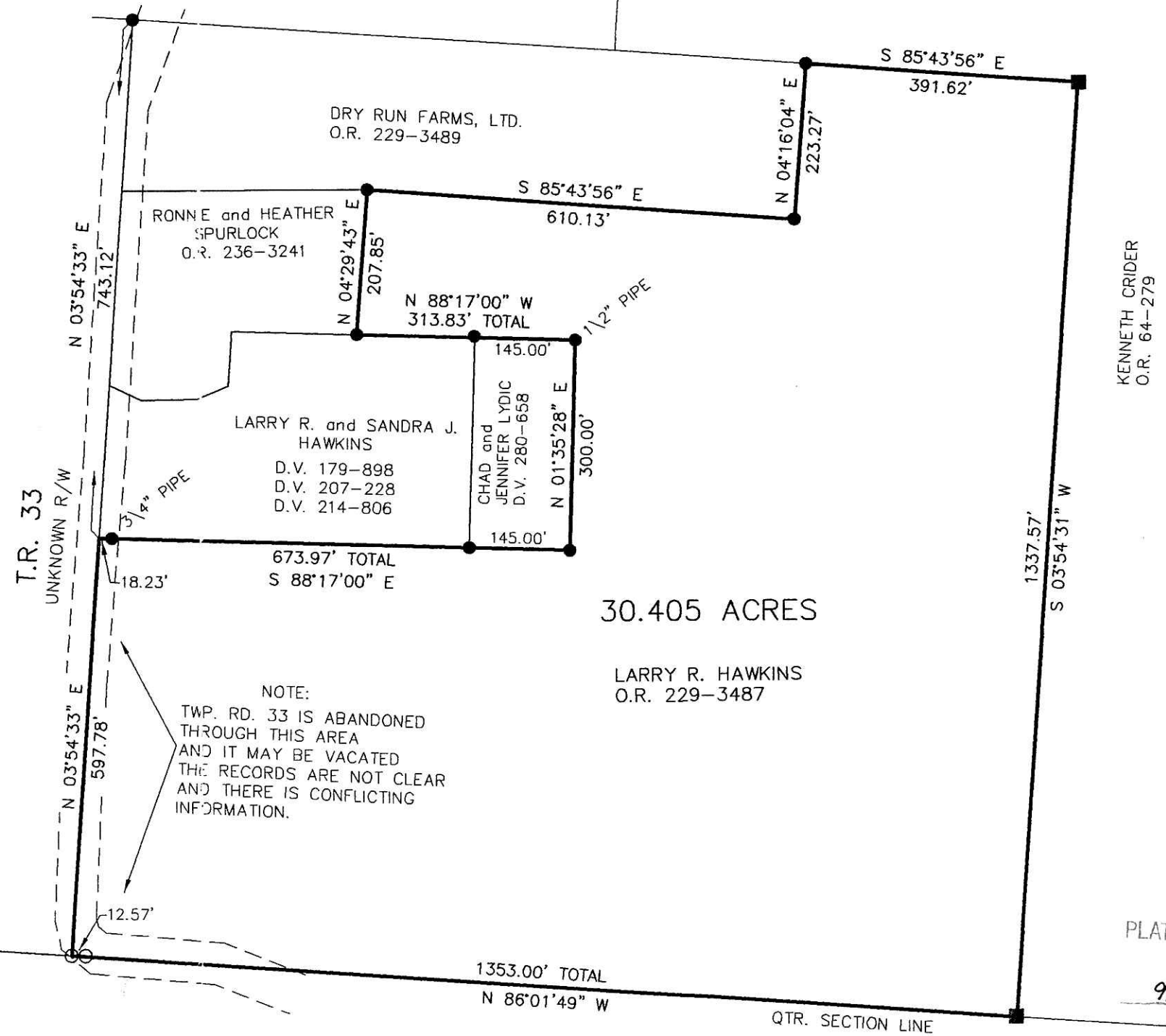
SCALE: 1"=200'

- STONE FOUND
- 5/8" REBAR FOUND UNLESS OTHERWISE NOTED
- 5/8" REBAR SET WITH I.D. CAP I.D. CAP MARKED "BAKER 6938"

REFERENCES

- O.R. VOL. 229 PAGE 3487
- O.R. VOL. 229 PAGE 3489
- O.R. VOL. 236 PAGE 3241
- O.R. VOL. 64 PAGE 287
- PLAT VOL. 16 PAGE 571
- BEARINGS FROM PLAT VOL. 19 PAGE 1957

201200079557
HOLMES CTY
TITL
MILLERSBURG OH



KENNETH CRIDER
O.R. 64-279



I CERTIFY THIS SURVEY TO BE CORRECT TO THE BEST OF MY KNOWLEDGE.

Donald C. Baker

DONALD C. BAKER P.S. 6938
DATE: AUG. 17, 2012
FDB\JG\AG\DB2
FILE NAME: WORK4\S-320A-12\MLD

ETHEL CRIDER LIFE ESTATE D.V. 111-290
KENNETH CRIDER; BESSIE CRIDER PURDY;
RALPH CRIDER; MELVIN CRIDER; WALTER
CRIDER; LARRY L. CRIDER; LELAND L.
CRIDER; JUDY A. PINNICK D.V. 275-671
DELORIS J. CRIDER D.V. 281-832
KENNETH CRIDER O.R. 64-287

NOTE:
TWP. RD. 33 IS ABANDONED THROUGH THIS AREA AND IT MAY BE VACATED THE RECORDS ARE NOT CLEAR AND THERE IS CONFLICTING INFORMATION.

DONALD C. BAKER SURVEYING
138 N. CLAY STREET
MILLERSBURG, OHIO 44654
PH. 330-674-4788
FAX 330-674-6027

PLAT APPROVED
9/6/2012