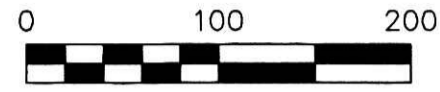


201200079224
 Filed for Record in
 HOLMES COUNTY, OH
 ANITA HALL, COUNTY RECORDER
 08-27-2012 At 04:12 pm.
 PLAT MED 43.20
 Of Book 19 Page 2117 - 2117

ORV 237
 pages
 1056-1059-1062

PRAIRIE TOWNSHIP
 N.E. & S.E. QTRS. SECTION 16
 T-13 N; R-13 W
 HOLMES COUNTY, OHIO

SURVEYED FOR: LINDA C. KISLING



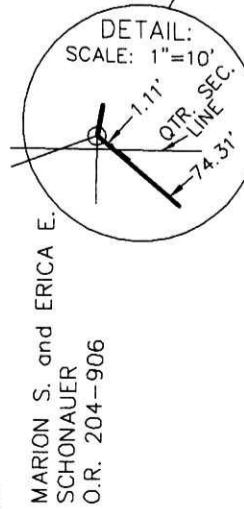
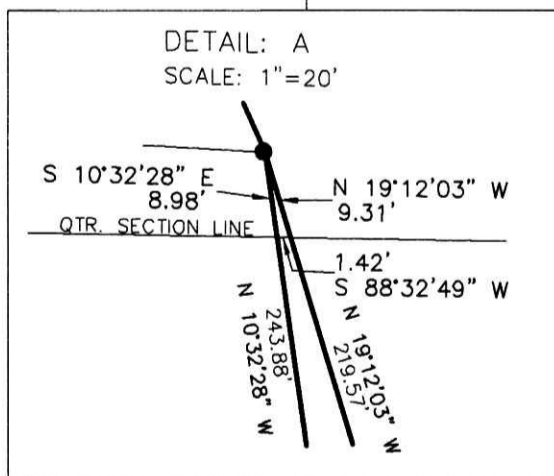
- STONE FOUND
- 5/8" REBAR FOUND UNLESS OTHERWISE NOTED
- 5/8" REBAR SET WITH I.D. CAP I.D. CAP MARKED "BAKER 6938"

REFERENCES

- DEED VOL. 268 PAGE 260
- O.R. VOL. 48 PAGE 149
- O.R. VOL. 204 PAGE 906
- O.R. VOL. 19 PAGE 932
- PLAT VOL. 13 PAGE 115
- PLAT VOL. 17 PAGE 377
- PLAT VOL. 14 PAGE 427
- PLAT VOL. 16 PAGE 449
- PLAT VOL. 12 PAGE 314
- BEARINGS FROM PLAT VOL. 13 PAGE 115

9 10
 16 15

LINDA C. KISLING
 D.V. 268-260
 O.R. 43-788
27.567 ACRES
 NE QTR. SEC. 16 - 24.711 ACRES
 SE QTR. SEC. 16 - 2.856 ACRES



I CERTIFY THIS SURVEY TO BE CORRECT TO THE BEST OF MY KNOWLEDGE.
 DONALD C. BAKER P.S. 6938
 DATE: MAY 24, 2012
 FDB/KES
 FILE NAME: WORK4\S-228-12

DONALD C. BAKER SURVEYING
 138 N. CLAY STREET
 MILLERSBURG, OHIO 44654
 PH. 330-674-4788
 FAX 330-674-6027

JOHN S. and MARY ANN SMUCKER
 O.R. 19-932

MARION S. and ERICA E. SCHONAUER
 O.R. 204-906

0.100 AC.
 TO GO TO ADJOINER
 N.E. QTR.-0.068 AC.
 S.E. QTR.-0.032 AC.

MARTIN J. and PATRICIA E. FISHER
 D.V. 258-484
 O.R. 48-149

TO GO TO ADJOINER
 0.100 AC.
 N.E. QTR.-0.0001 AC.
 S.E. QTR.-0.0999 AC.

APPROVED FOR TRANSFER ONLY
 NO SUBDIVISION PLAT REQUIRED
 (O.R.C. 711.001 & 711.131)
 Lot(s) not for building unless approved by Board of Health.
 HOLMES CO. PLANNING COMMISSION
 By: 12/14 Date: 8/8/12

PLAT APPROVED
8/6/2012

