

201200079127
 Filed for Record in
 HOLMES COUNTY, OH
 ANITA HALL, COUNTY RECORDER
 09-22-2012 At 12:25 pm.
 SMALL PLAT 40.00
 OR Book 19 Page 2113 - 112

OR 237p 548

201200079127
 CRITCHFIELD
 & JOHNSTON ATTYS
 MILLERSBURG OH

HARDY TOWNSHIP
 2ND. QTR. LOTS 18 & 30
 T-9 N; R-7 W
 HOLMES COUNTY, OHIO

SURVEYED FOR: HOLMES CHEESE CO.



SCALE: 1"=300'

- HIGHWAY MONUMENT FOUND
- STONE FOUND
- 5/8" REBAR FOUND UNLESS OTHERWISE NOTED
- △ R.R. SPIKE SET
- 5/8" REBAR SET WITH I.D. CAP I.D. CAP MARKED "BAKER 6938"

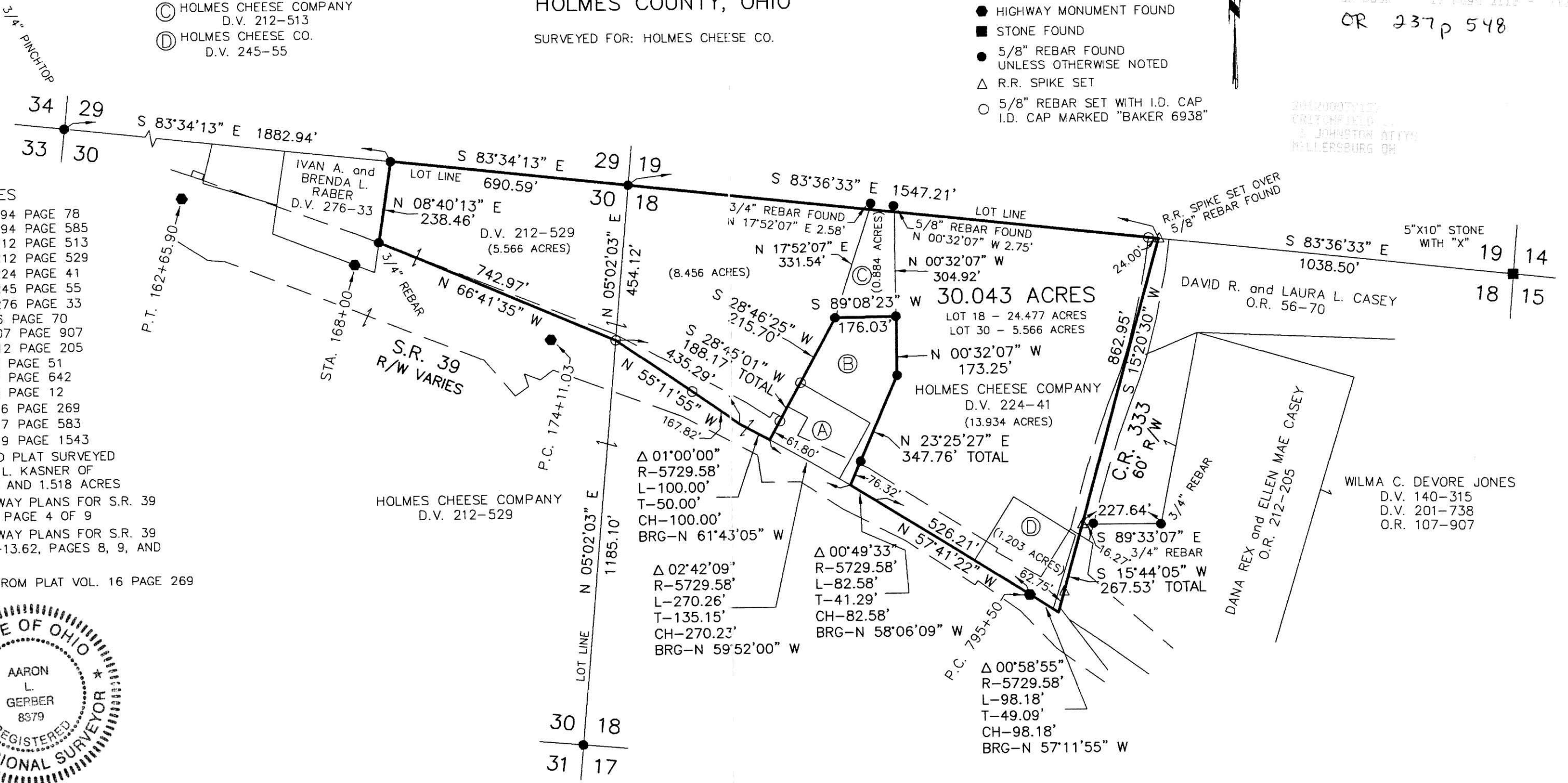
- Ⓐ WALTER P. and LYDIA J. RAMSEYER D.V. 194-585
- Ⓑ WALTER P. and LYDIA J. RAMSEYER D.V. 194-78
- Ⓒ HOLMES CHEESE COMPANY D.V. 212-513
- Ⓓ HOLMES CHEESE CO. D.V. 245-55

REFERENCES
 DEED VOL. 194 PAGE 78
 DEED VOL. 194 PAGE 585
 DEED VOL. 212 PAGE 513
 DEED VOL. 212 PAGE 529
 DEED VOL. 224 PAGE 41
 DEED VOL. 245 PAGE 55
 DEED VOL. 276 PAGE 33
 O.R. VOL. 56 PAGE 70
 O.R. VOL. 107 PAGE 907
 O.R. VOL. 212 PAGE 205
 PLAT VOL. 3 PAGE 51
 PLAT VOL. 7 PAGE 642
 PLAT VOL. 8 PAGE 12
 PLAT VOL. 16 PAGE 269
 PLAT VOL. 17 PAGE 583
 PLAT VOL. 19 PAGE 1543
 UNRECORDED PLAT SURVEYED BY ROBERT L. KASNER OF 0.888 ACRE AND 1.518 ACRES
 RIGHT-OF-WAY PLANS FOR S.R. 39 SEC. 15.04, PAGE 4 OF 9
 RIGHT-OF-WAY PLANS FOR S.R. 39 SEC. 13.22-13.62, PAGES 8, 9, AND 10 OF 10
 BEARINGS FROM PLAT VOL. 16 PAGE 269



I CERTIFY THIS SURVEY TO BE CORRECT TO THE BEST OF MY KNOWLEDGE.

A-L-G
 AARON L. GERBER P.S. 8379
 DATE: JAN. 11, 2012
 ALG\CJG
 FILE NAME: WORK3-2012\S-5-12\ALG



PLAT APPROVED

8/15/2012

DONALD C. BAKER SURVEYING
 138 N. CLAY STREET
 MILLERSBURG, OHIO 44654
 PH. 330-674-4788
 FAX 330-674-6027