

0 200 400



SCALE: 1"=200'

- STONE FOUND
- ▲ R.R. SPIKE FOUND
- 5/8" REBAR FOUND UNLESS OTHERWISE NOTED
- △ R.R. SPIKE SET
- 5/8" REBAR SET WITH I.D. CAP I.D. CAP MARKED "BAKER 6938"



BERLIN TOWNSHIP
N.E. QTR. SECTION 14
T-9 N; R-5 W
HOLMES COUNTY, OHIO

SURVEYED FOR: HARVEY BOWMAN

REFERENCES

- O.R. VOL. 222 PAGE 1501
- O.R. VOL. 138 PAGE 36
- PLAT VOL. 16 PAGE 558
- BEARINGS FROM PLAT VOL. 16 PAGE 558

Instrument 201200078752 OR Book Page 19 2103

201200078752
Filed for Record in
HOLMES COUNTY, OH
ANITA HALL, COUNTY RECORDER
07-30-2012 At 12:17 PM.
SMALL PLAT 40.00
OR Book 19 Page 2103 - 2103

OR 236p 2177

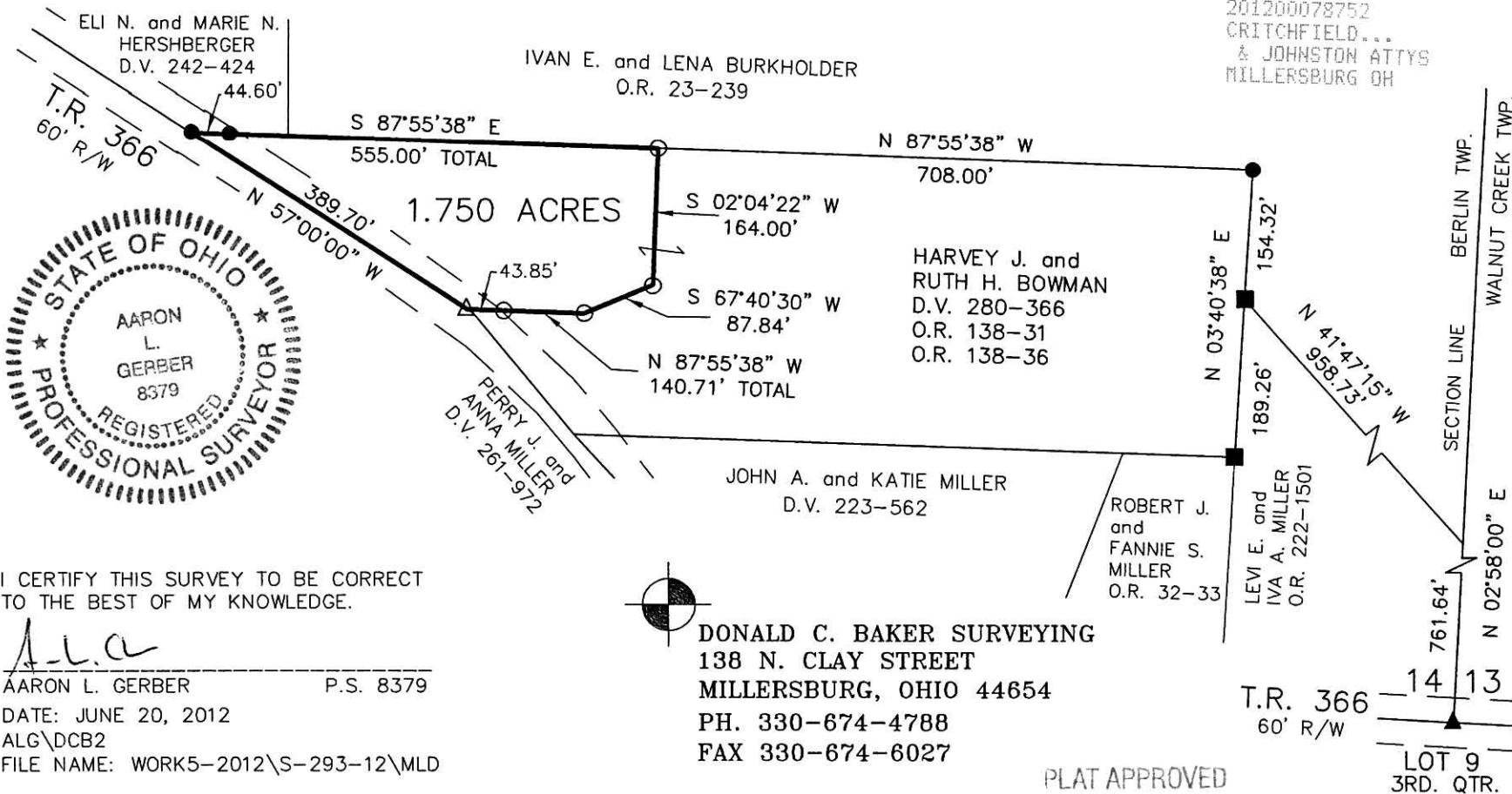
APPROVED FOR TRANSFER ONLY
NO SUBDIVISION PLAT REQUIRED

(O.R.C. 711.001 & 711.131)
Lot(s) not for building unless
approved by Board of Health.



HOLMES CO. PLANNING COMMISSION
By MH Date 7/27/12

201200078752
CRITCHFIELD...
& JOHNSTON ATTYS
MILLERSBURG OH



I CERTIFY THIS SURVEY TO BE CORRECT TO THE BEST OF MY KNOWLEDGE.

A.L.G.

AARON L. GERBER P.S. 8379

DATE: JUNE 20, 2012

ALG\DCB2

FILE NAME: WORK5-2012\S-293-12\MLD



DONALD C. BAKER SURVEYING
138 N. CLAY STREET
MILLERSBURG, OHIO 44654
PH. 330-674-4788
FAX 330-674-6027

PLAT APPROVED

7/25/2012