

SCALE: 1"=200'

HARDY TOWNSHIP
1ST. QTR., LOT 33
T-9 N; R-7 W
HOLMES COUNTY, OHIO

SURVEYED FOR: HAB FARMS, LTD.

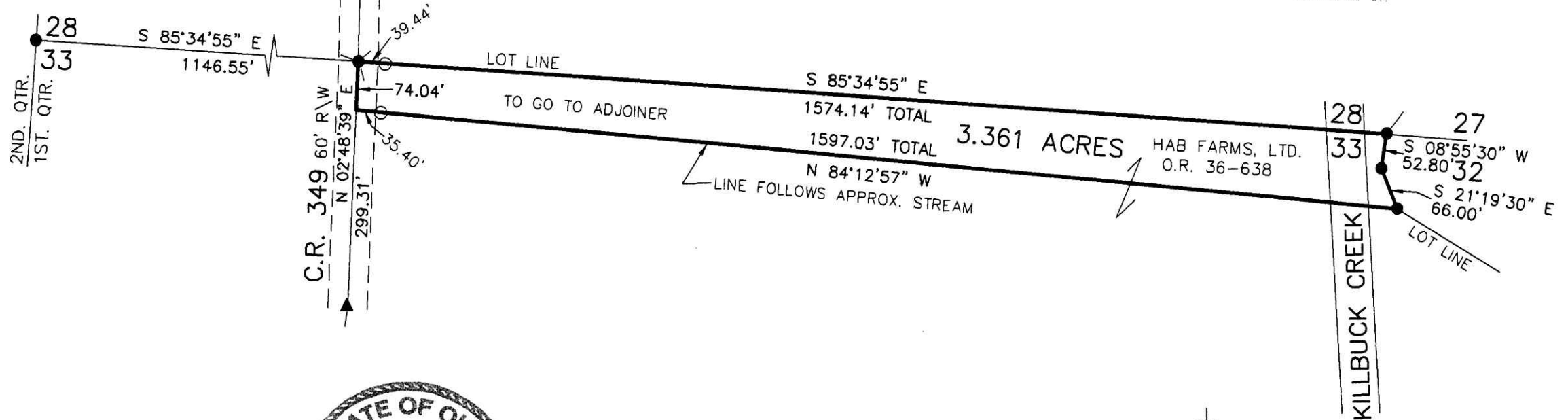
201200078050
Filed for Record in
HOLMES COUNTY, OH
ANITA HALL, COUNTY RECORDER
06-18-2012 At 10:31 am.
SMALL PLAT 40.00
OR Book 19 Page 2085 - 2085
DR 235p 1531

201200078050
HEARTLAND
TITLE
MILLERSBURG OH

- P.K. NAIL FOUND
- ▲ R.R. SPIKE FOUND
- 5/8" REBAR FOUND
UNLESS OTHERWISE NOTED
- 5/8" REBAR SET WITH I.D. CAP
I.D. CAP MARKED "BAKER 6938"

REFERENCES

O.R. VOL. 36 PAGE 524
PLAT VOL. 16 PAGE 524
BEARINGS FROM PLAT VOL. 16 PAGE 524



I CERTIFY THIS SURVEY TO BE CORRECT TO THE BEST OF MY KNOWLEDGE.

Donald C. Baker

DONALD C. BAKER P.S. 6938

DATE: APRIL 6, 2012

FDB\CG

FILE NAME: WORK4\S-146-12



APPROVED FOR TRANSFER ONLY
NO SUBDIVISION PLAT REQUIRED

(O.R.C. 711.001 & 711.131)
Lot(s) not for building unless approved by Board of Health.



HOLMES CO. PLANNING COMMISSION
By *mt* Date *6/11/12*

PLAT APPROVED

6/11/2012



DONALD C. BAKER SURVEYING
138 N. CLAY STREET
MILLERSBURG, OHIO 44654
PH. 330-674-4788
FAX 330-674-6027